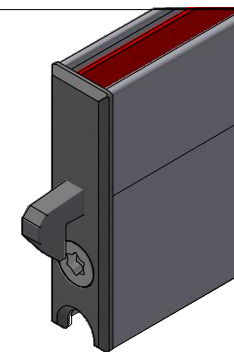


Technical drawing of a shaft assembly. The shaft is shown in cross-section at the left end, with a pulley mounted on it. The shaft is supported by bearings. A gear is mounted on the shaft at the right end. The drawing includes dimension lines and a break symbol in the middle of the shaft.



L=  mm (min.300mm - max. 1500mm)

**L**

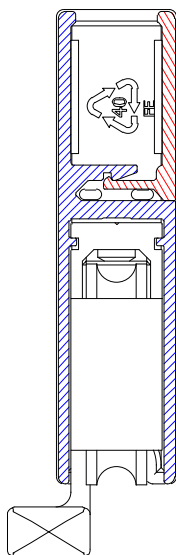
A


A

R

R

A-A



Designet af DW	Skabt 13.11.2023	Ændret	Kommentar	
		Beskrivelse SunView glas bund profil sæt venstre lateralt: transportør højre, højre lateralt: endehætte med krog L=xxxxmm (max. 1500mm), aluminium natur anodiseret		
		Artikelnummer 30902550211	Størrelse A4	Vægt 1 : 2