

The ONLEVEL logo is displayed in a white, bold, sans-serif font. The letters 'O', 'N', and 'E' are standard, while the 'L' is stylized with a horizontal gap in the middle. The 'V' and 'E' are also in a clean, modern font. The background is a dark, textured surface, possibly a wall or a piece of furniture, with a bright yellow vertical bar on the left side.

ONLEVEL

A small, black rectangular label with the ONLEVEL logo in white. The logo is the same stylized font as seen in the top block. The label is affixed to a light-colored, textured surface, likely the side of a piece of furniture or a wall-mounted device. The background of the entire page is a dark, textured surface with a bright yellow vertical bar on the left.

ONLEVEL

INFINITY**SLIDE 69**
MOUNTING INSTRUCTION
FOR GLASS DOORS

INFINITYSLIDE 69 | OVERVIEW

About these instructions

This instruction manual is part of the product and contains information about the scope of delivery as well as proper installation and adjustment. Make sure to read the complete manual before performing any work to guarantee a safe installation and use of the product. The information contained herein will maximize your safety.

Keep the manual in a safe place to have it at hand at all times. Please check for completeness and damages! Undisclosed incompleteness or damages shall be deemed accepted upon the start of installation work. We do not accept any liability for improper installation or transport. We reserve any technical changes required to improve this product which diverge from the presentation given in this manual. The illustrations of this manual serve the basic understanding and may vary from the actual design.

Intended use

INFINITYSLIDE 69 is a sliding door system with glass elements which are only suited for interior applications and must not be exposed to moisture or humidity. In addition, the sliding door system is only suitable for manual operation (opening & closing).

Use our product exclusively as described in this manual. Any other application is considered contrary to the intended use.

Misuse

All of the following are considered foreseeable misuse:

- | Introducing obstacles into the opening area that impede the door elements from sliding
- | Closing the door elements while a person or body parts are present in this area
- | Using spare parts without our approval
- | Rebuilding or modifying the construction or individual parts of it
- | Exceeding permissible dimensions and weights
- | Use only silicone and oil free cleaners (e. g. acetone). Lukewarm water without any additives is often enough.
- | The substructure/wall must be permanently stable.
- | The mounting hardware must meet the requirements of substructure/wall and door weight.

Liability

The system may only be put together with original parts.

We do not accept liability for any damage resulting from a not intended use or the use of parts without approval.

For assessing the glass doors, we refer to the DIN EN12150 directive for tempered glass and the EN ISO 12543-1 directive for laminated safety glass consisting of 2 tempered glass panes + 0.76 mm film.

Staff

Our product must only be mounted by qualified staff who have the appropriate training and experience to carry out such works. The staff must be able to identify risks while handling the product and avoid any potential dangers.

The installation must be carried out by at least two people.

Safety



This is a danger sign. It alerts you of risks of injury. Therefore, please take all measures indicated together with this symbol to avoid injuries.

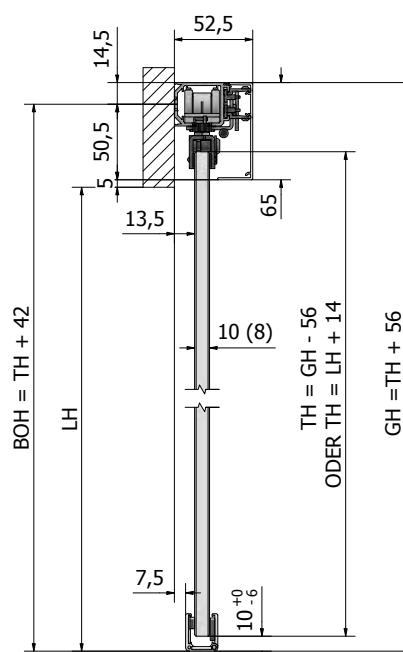
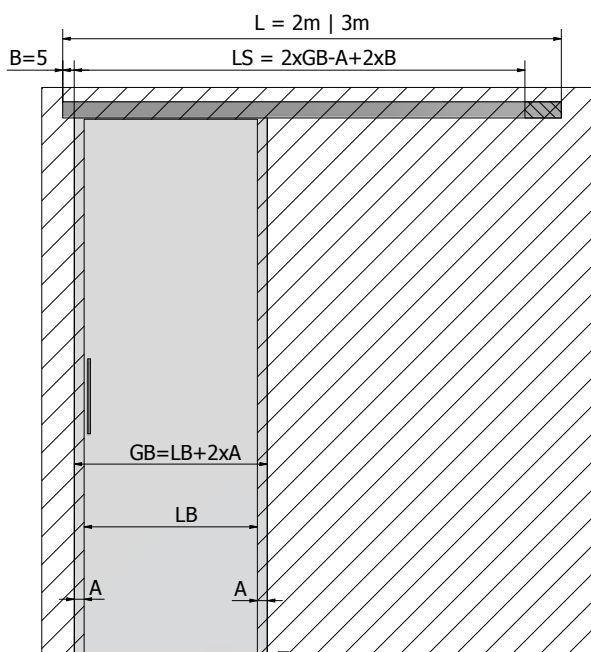
Safety at work comes first – always wear your personal protective equipment: safety shoes, work clothes, protective gloves.

Storage

Store the supplied parts in their original packaging to avoid damage to the product.

Consider the following to avoid damage to the glass elements:

- | Store glass elements in a safe place and protect them from tipping over.
- | Do not place glass elements on hard or uneven surfaces.



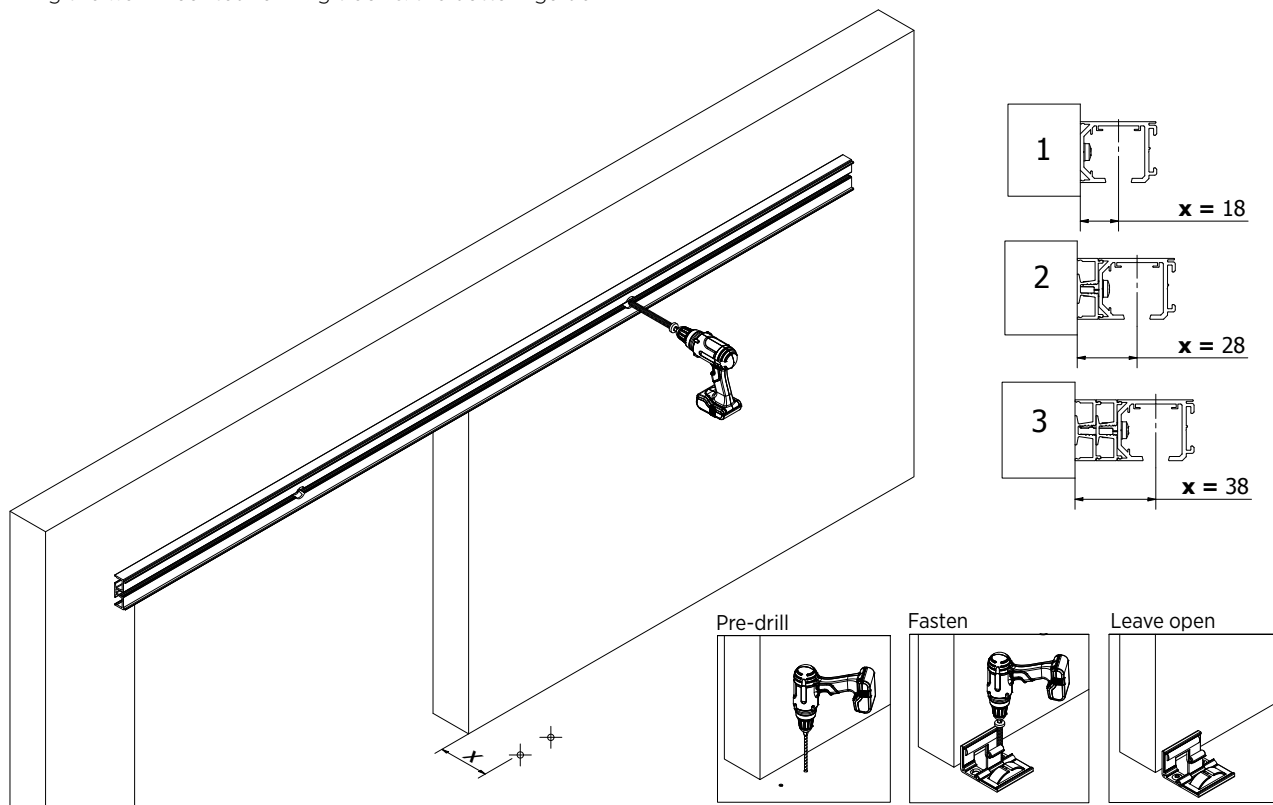
Data Sheet Legend

BOH = Drilling height
TH = Door height
LB = Clear width
LH = Clear height
GH = Total height
LS = Track length
B = Distance glass edge to end cap
A = Glass protrusion ($> = 40$ mm)
LB = Opening dimension
GB = Glass width
L = Total width

INFINITY **SLIDE 69** | INSTALLATION

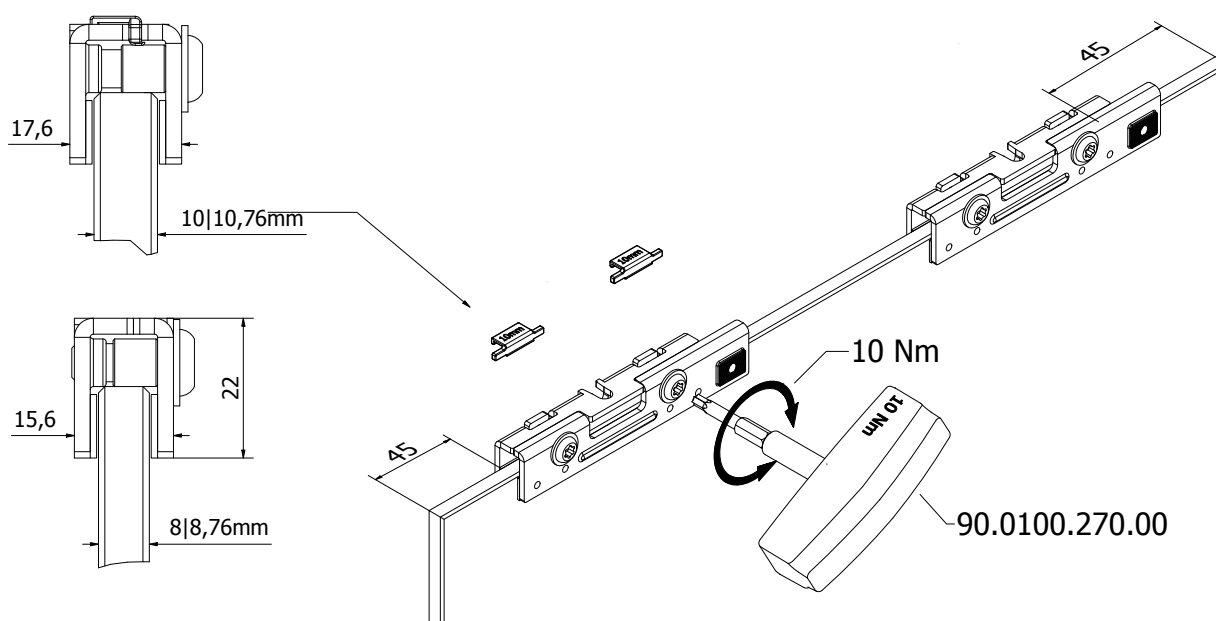
Step 1

Fixing the wall-mounted running track & the bottom guide



Step 2

Fixing the clamping jaws to the glass

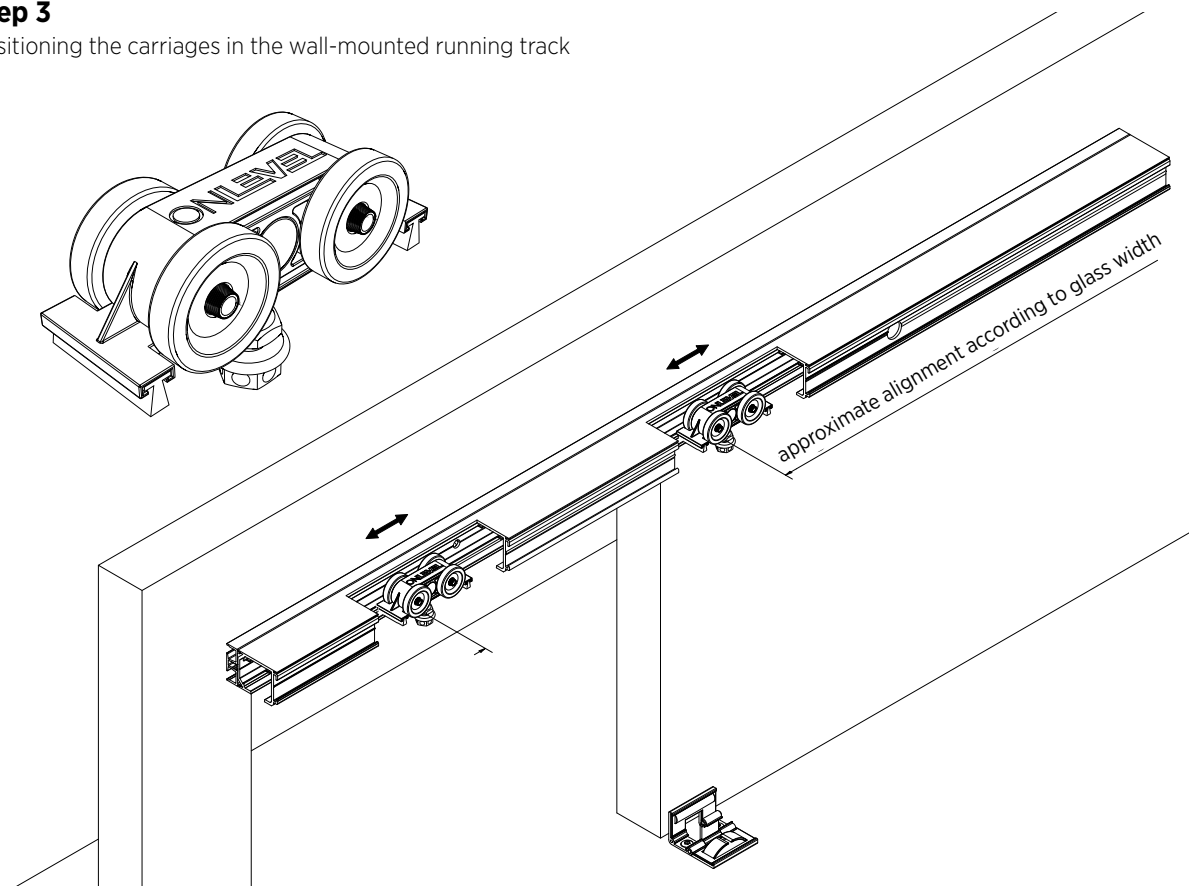


The clamping area has to be cleaned very well with glass cleaner or something similar and must be dry as well as free of dust, grease and dirt

INFINITYSLIDE 69 | INSTALLATION

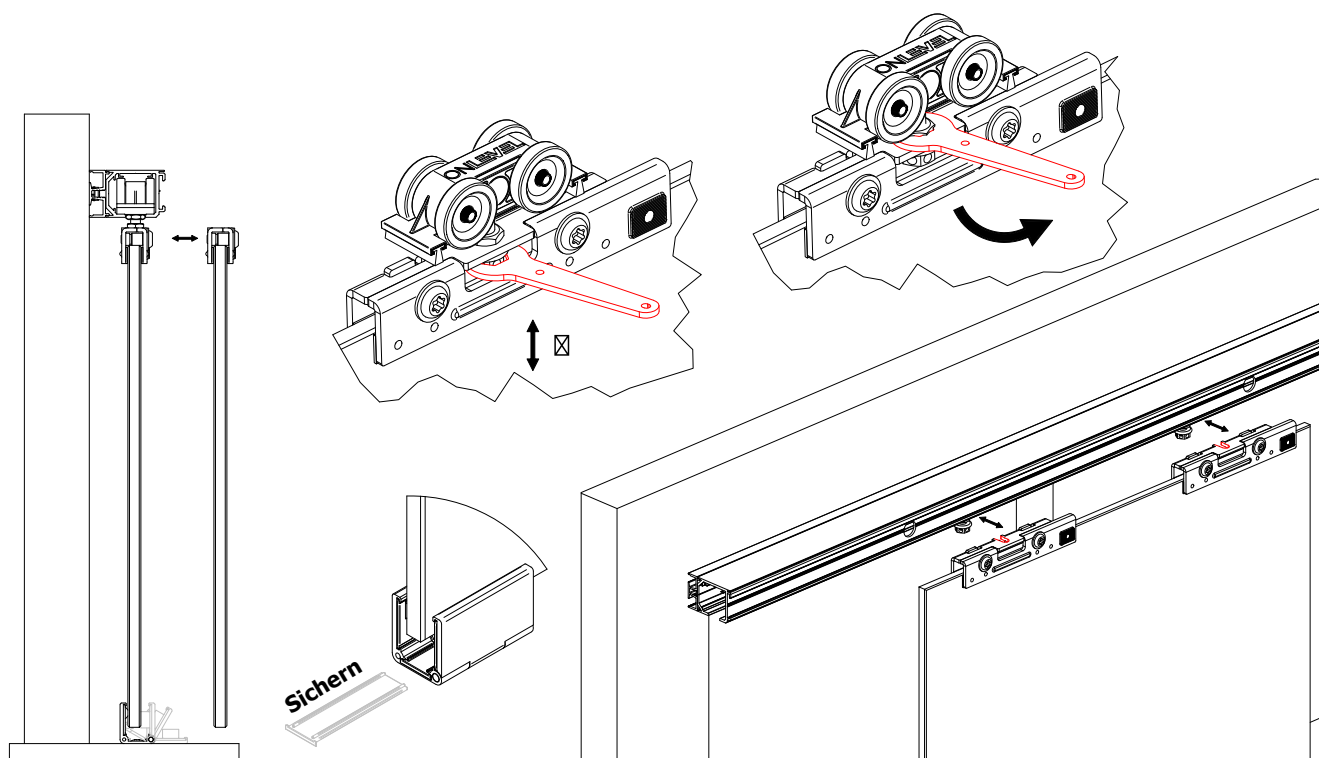
Step 3

Positioning the carriages in the wall-mounted running track



Step 4

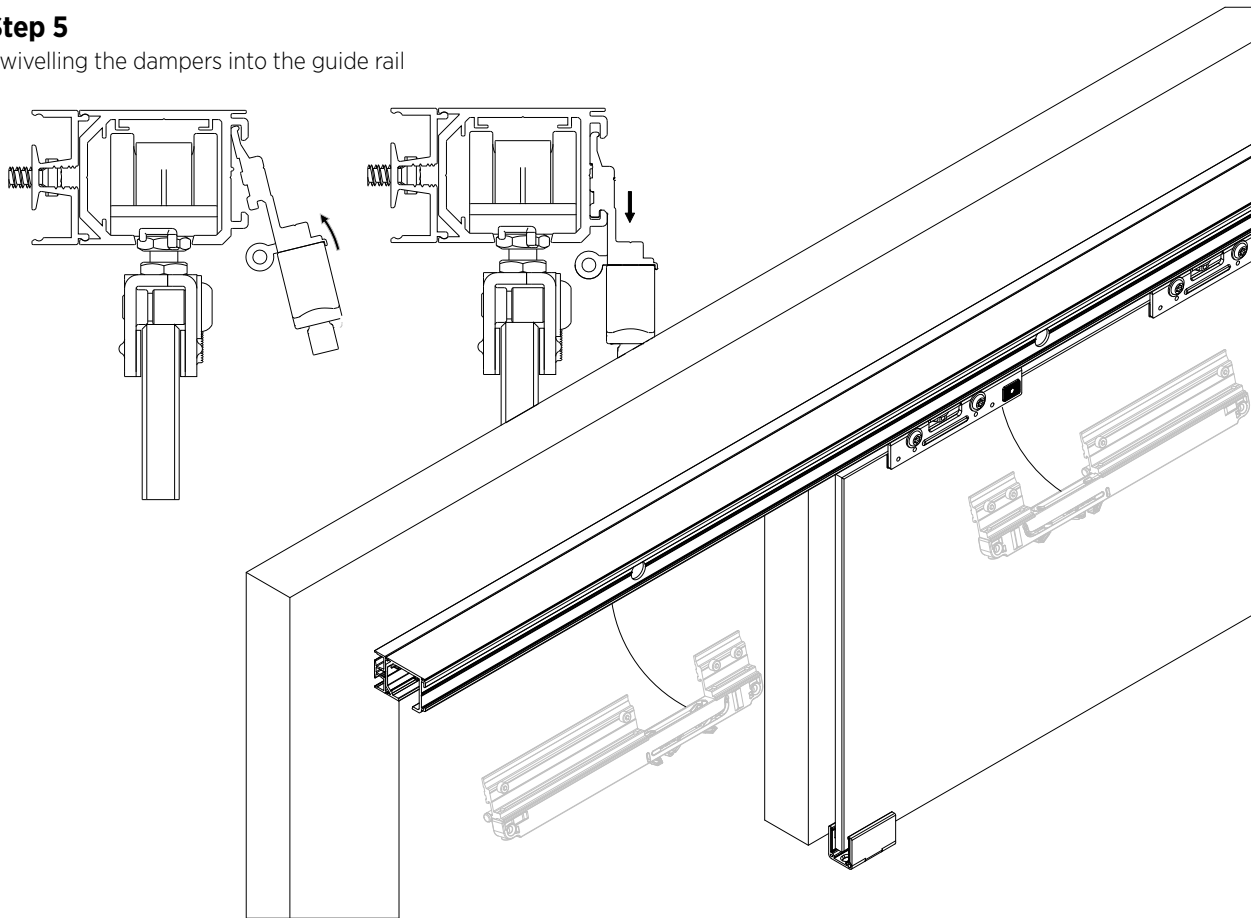
Inserting the glass pane into the clamping jaws



INFINITY **SLIDE 69** | INSTALLATION

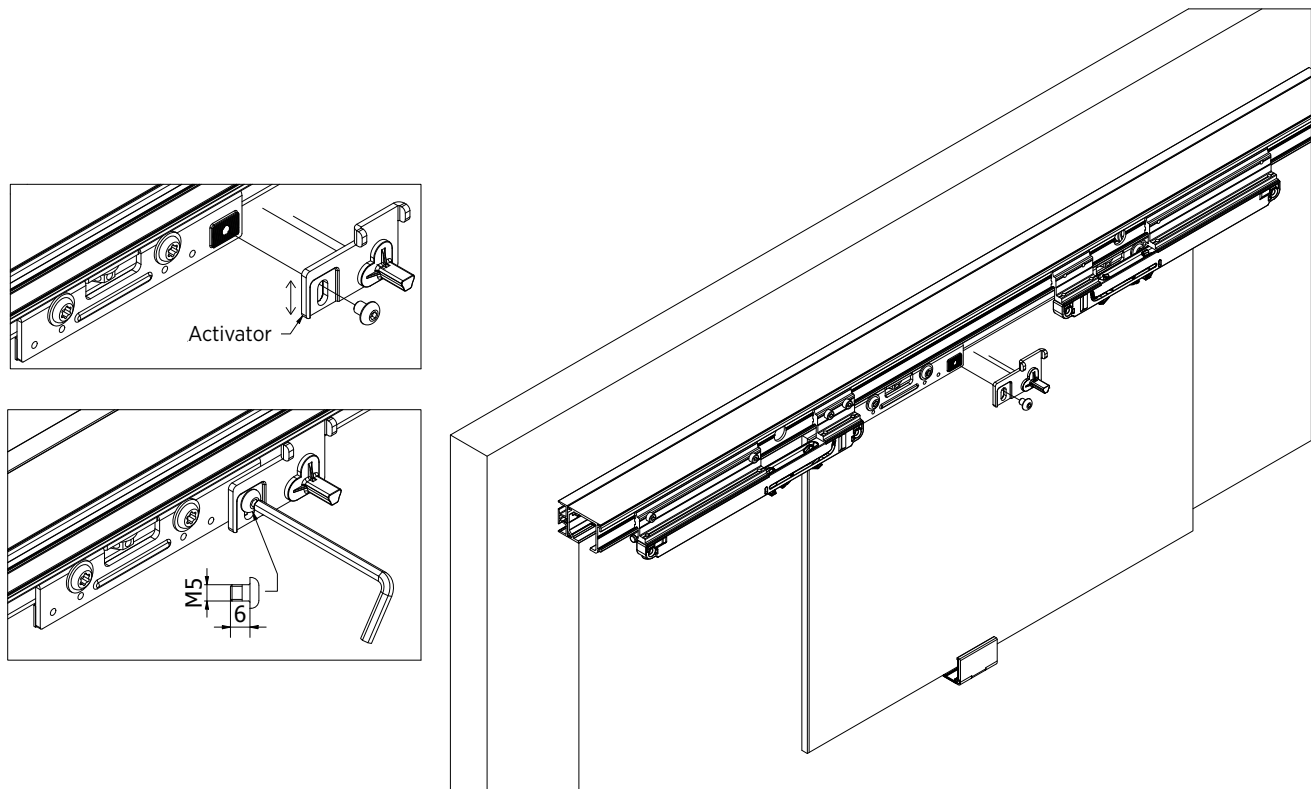
Step 5

Swivelling the dampers into the guide rail



Step 6

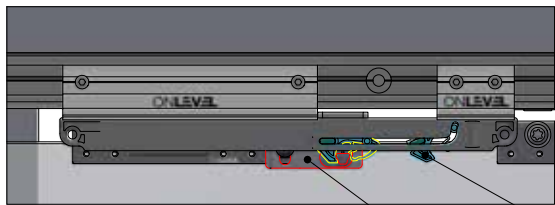
Fixing the activator to the glass clamping jaws



INFINITY**SLIDE 69** | INSTALLATION

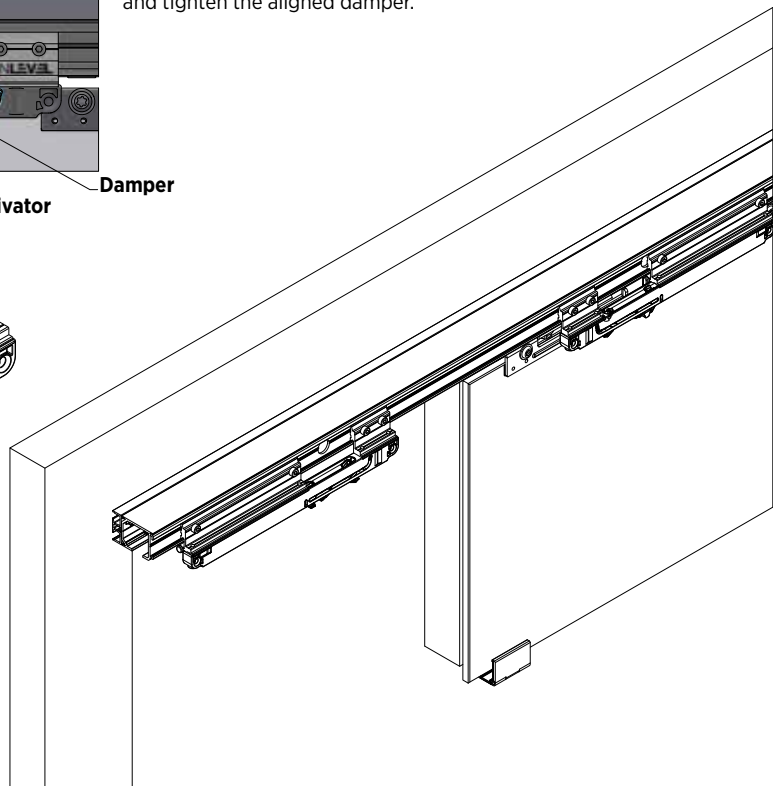
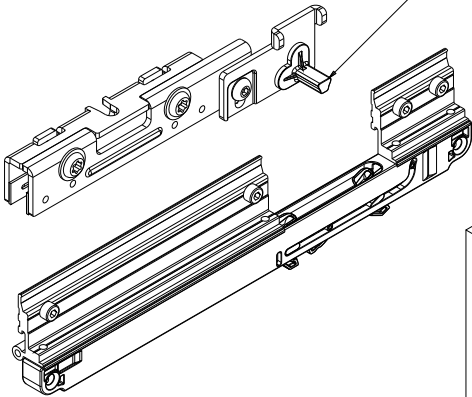
Step 7

Sliding the activator into the damper



Slide the activator into the damper and tighten the aligned damper.

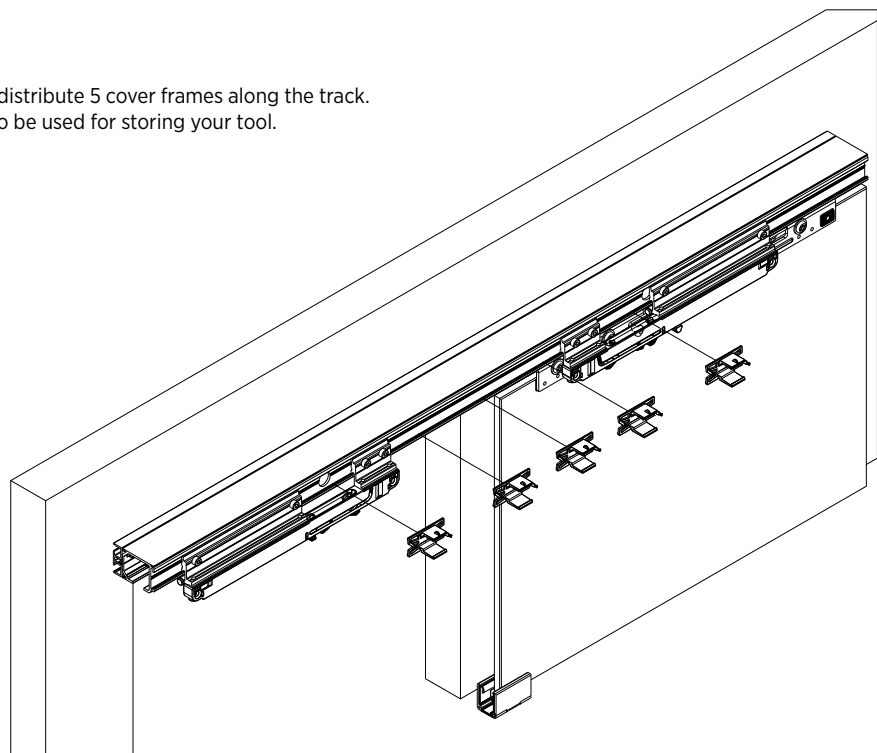
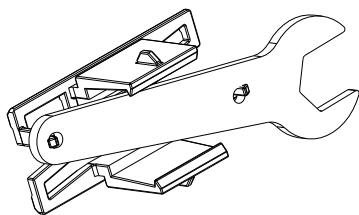
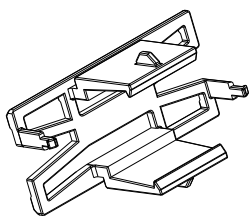
Activator Damper



Step 8

Fixing the cover retainer in the profile

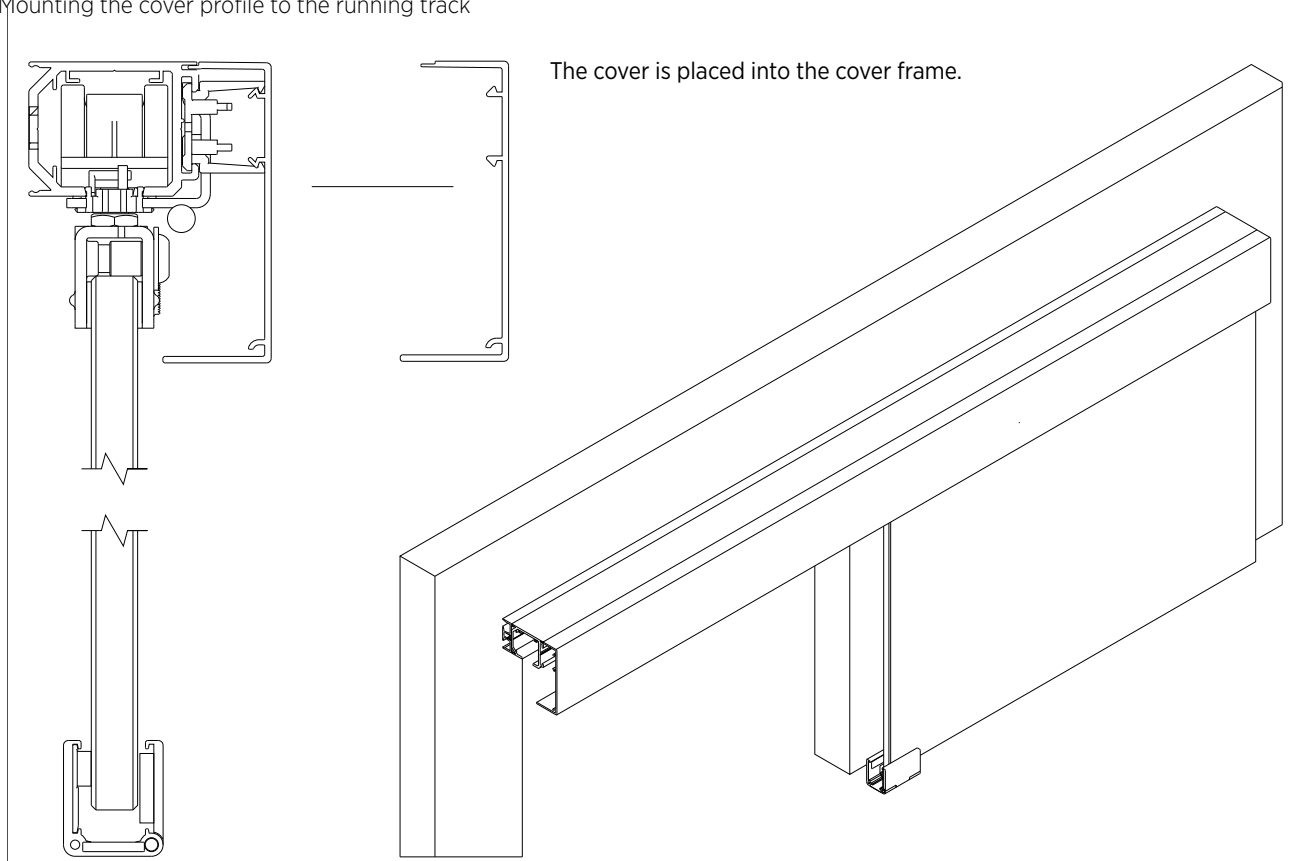
Evenly distribute 5 cover frames along the track.
Can also be used for storing your tool.



INFINITY **SLIDE 69** | INSTALLATION

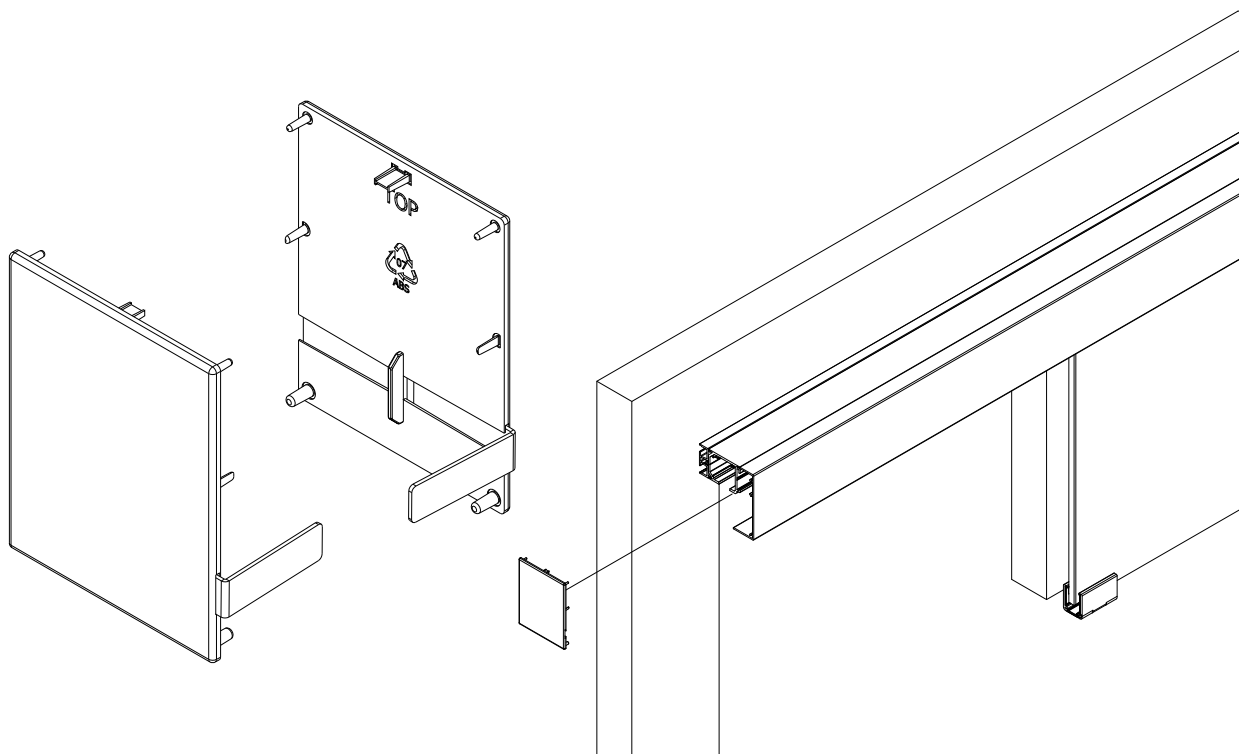
Step 9

Mounting the cover profile to the running track

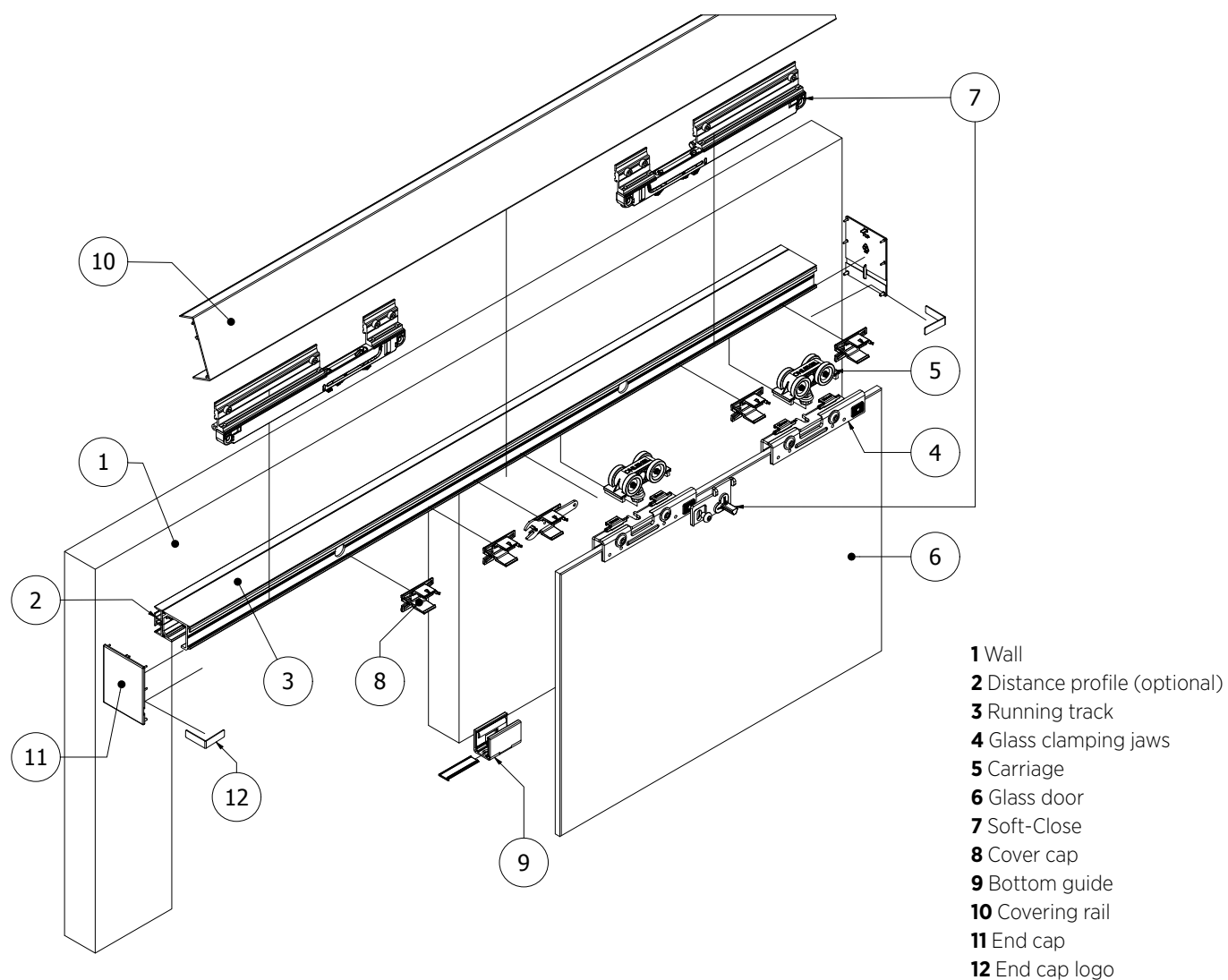


Step 10

Mounting the end caps



Overview



ONLEVEL

ONLEVEL Ltd. | Units 6 & 7, Alexandria Court | Alexandria Drive
 Ashton Commerce Park | Ashton-under-Lyne | Lancashire OL7 0QN | United Kingdom
 T +44 0161 804 9500 | F +44 0161 804 9505 | info@onlevel-uk.com | www.onlevel.com