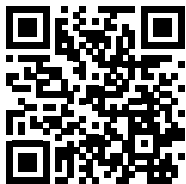


A black and white photograph showing a close-up of industrial fall protection equipment. The image features a series of stainless steel components, including a vertical rail and several horizontal brackets. Each bracket is secured with a large, hexagonal bolt. The background is a blurred, light-colored surface, possibly a wall or ceiling. The overall composition is clean and technical, emphasizing the precision and durability of the hardware.

ONLEVEL

STAINLESS STEEL PARTS
FOR FALL PROTECTIONS



[Contact](#) [About us](#) [Terms](#) [Imprint](#) [FAQ](#)

ONLEVEL

[Home](#)

[Shop](#)

[Configurator](#)

[Downloads](#)

[Promotions](#)

Shop



Glass Balustrades



Juliet Balconies



Glass Sliding Wall



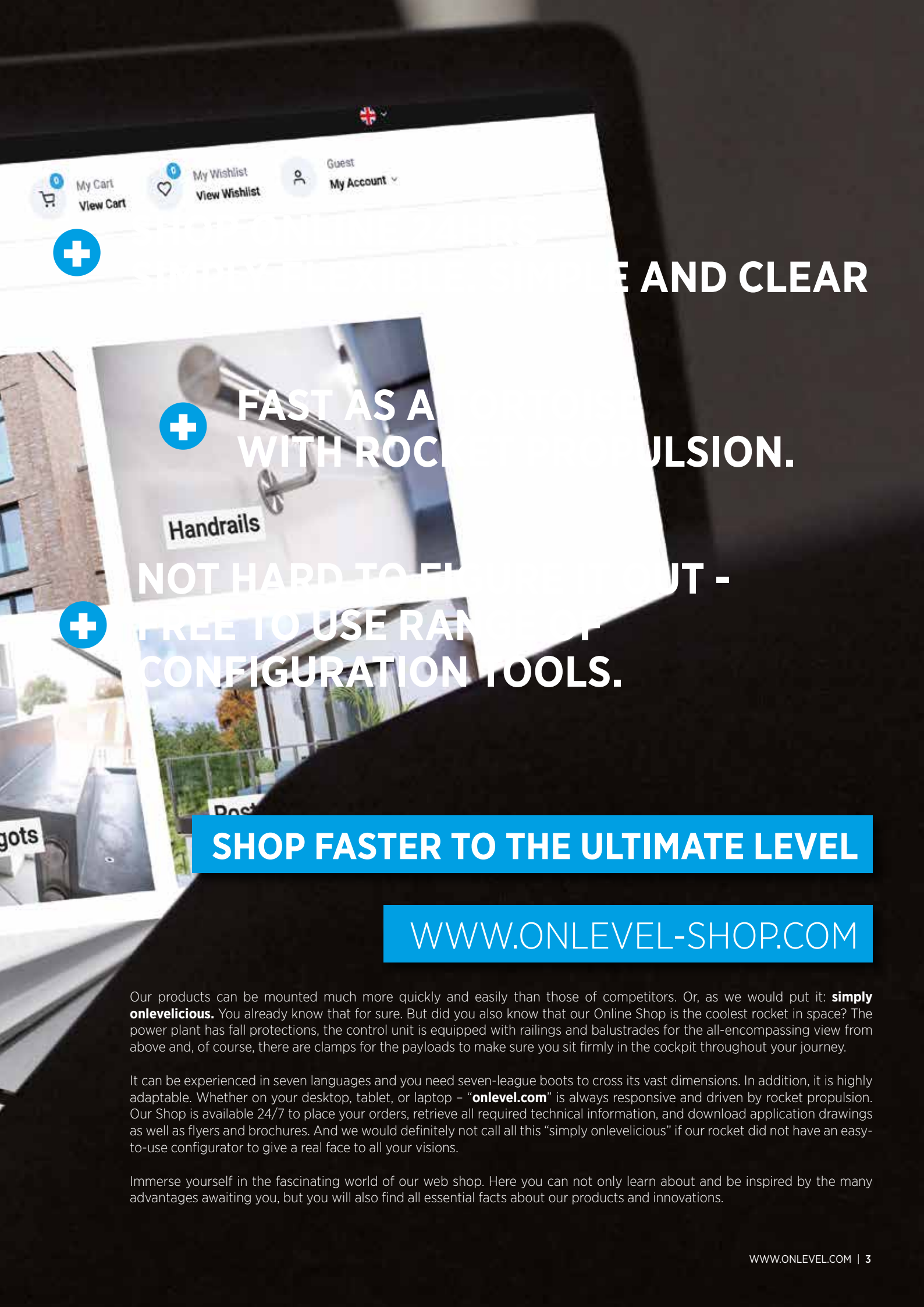
Points and Spigots



LED Products



Canopies



E AND CLEAR



FAST AS A
WITH ROCKET

PROPULSION.

NOT HARD TO FLIGHT -



FREE TO USE RANGE OF
CONFIGURATION TOOLS.

SHOP FASTER TO THE ULTIMATE LEVEL

WWW.ONLEVEL-SHOP.COM

Our products can be mounted much more quickly and easily than those of competitors. Or, as we would put it: **simply onlevelicious**. You already know that for sure. But did you also know that our Online Shop is the coolest rocket in space? The power plant has fall protections, the control unit is equipped with railings and balustrades for the all-encompassing view from above and, of course, there are clamps for the payloads to make sure you sit firmly in the cockpit throughout your journey.

It can be experienced in seven languages and you need seven-league boots to cross its vast dimensions. In addition, it is highly adaptable. Whether on your desktop, tablet, or laptop – “**onlevel.com**” is always responsive and driven by rocket propulsion. Our Shop is available 24/7 to place your orders, retrieve all required technical information, and download application drawings as well as flyers and brochures. And we would definitely not call all this “simply onlevelicious” if our rocket did not have an easy-to-use configurator to give a real face to all your visions.

Immerse yourself in the fascinating world of our web shop. Here you can not only learn about and be inspired by the many advantages awaiting you, but you will also find all essential facts about our products and innovations.

WHAT THE HELL ARE WE DOING

WE'RE ONLEVEL

This is not just a slogan. This is our philosophy. This is the way we work. For our customers – so that no unanswered questions remain as far as the installation, quality and design of system applications for balustrades and glass hardware is concerned and everything remains transparent. The spark of enthusiasm will also jump over to you, as to all those working with our products. We generate this enthusiasm because we love what we do.

ONLEVEL was founded in 2000 as a steelwork company and has since become established as a full-service provider for balustrade systems. Since 2015, **ONLEVEL** has been represented at 4 locations and with approx. 200 partners in Germany and abroad on 5 continents.

The company is managed in partnership by Iwan Oude Luttikhuis and Marcus Lenge. Thanks to our Project and Trade divisions, designers, users and partners equally profit from our experiences and innovations.

Simply onlevelicious

Our customers experience innovative performance, passionate consultation and high implementation speed. The claim “start with a clear vision” forms part of our philosophy and is our mission at the same time: We have proven to the rather conservative construction industry that a new perception of things opens your eyes and sharpens your vision. Complexity decreases with every new development and every new product generation, which is a prerequisite for the corporate vision: [simply onlevelicious](#).

Our products can be mounted so much more quickly and easily than standard systems – that's your advantage. The quality of our products also searches for its match – as our products are very consciously developed in line with their practical application. The people we share this passion with are highly motivated, enjoy and give trust. As all of us know this, our products are that innovative, safe and transparent. Or, as we would put it: [simply onlevelicious](#).

ONLEVEL products shine with application possibilities in a timelessly elegant and classical design. Whether for windows, balconies, staircases, buildings, façades – **ONLEVEL** offers a system including floor profiles, floor-to-ceiling glazings, point fixing systems and innovative clamping solutions for innumerable applications.

This does not sound as sexy as it looks. Nevertheless, you can give this system your individual look and combine it just as the fancy takes you. With **ONLEVEL** you can create your individual design yourself and combine things as you like: You can either choose the required components from one of our systems or combine products from our different lines. Our products are not only very versatile in use but undergo strict inspections by leading international supervisory bodies and hold the required quality labels and certificates of different countries. The CE label for stainless steel, aluminium, die-cast zinc and glass products is among them, for example.

ALSO VISIT US ONLINE AT WWW.ONLEVEL.COM

HERE YOU WILL FIND EVERYTHING CONCERNING MOUNTING
INSTRUCTIONS, INSPECTION CERTIFICATES, CAD IN ANY FORMAT AND
MUCH MORE!

GLASS CLAMPS AND POSTS

7

POINT FIXINGS AND HANDRAILS

41

LED ILLUMINATED HANDRAIL

63

GLASS PARTITIONS

81

ACCESSORIES

93

GLASS CLAMPS AND POSTS

- 8** KRONOS
- 16** GLASS CLAMP SYSTEMS WITH ABP CERTIFICATE
- 22** EMPIRE STATE POST TOP
- 35** STANDARD HANDRAILS

KRONOS

One clamp for all applications

Inspiring Innovations.

KRONOS by ONLEVEL, the first adjustable clamp ever. While developing this clamp, apart from the price, we always also had efficiency in mind. Creativity and innovation can only work if they go hand in hand with enthusiasm – on all levels: aesthetic design, efficient products and simple installation.

All relevant glass thicknesses instantly adjustable:

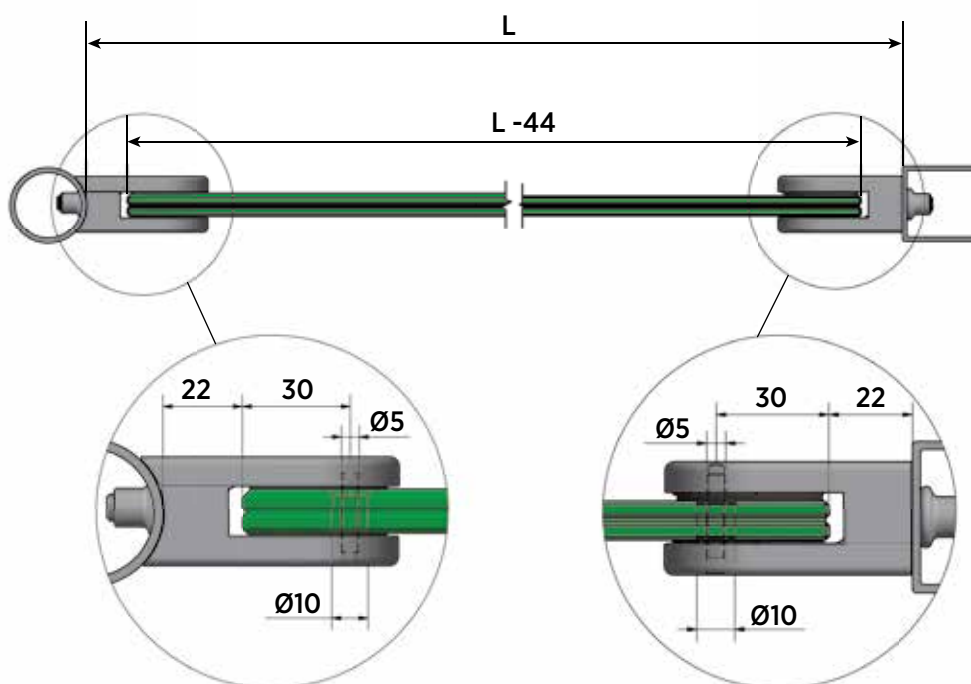
Step	Glass Thickness
1	8 mm
2	4/4/2 (8.76 mm)
3	10 mm
4	5/5/2 (10.76 mm)
5	12 mm
6	6/6/2 (12.76 mm)

Essential Features

- | All relevant glass thicknesses: from 8 mm tempered glass up to 12.76 mm laminated safety glass – instantly adjustable
- | All relevant post connections – flat back and 42 mm, 48 mm post (round)
- | Considerably reduced inventory
- | Considerably reduced technical support
- | Unsurpassed quality – no unexpected widening and loosening of the grip – guaranteed
- | Concealed screws – simply attach the desired cover – clean appearance from both sides
- | Simple installation – no longer do you require fiddly assembly of single components
- | Finish will be 100% identical to post or to the entire project, whatever the colour
- | Made in Germany- timeless precision and quality



Kronos glass dimensions



A clamp made from one piece –
no assembly of single components



Concealed screws – simply
attach the desired cover

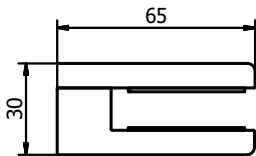
One clamp for all glass thicknesses
– from 8 mm tempered glass up to
12.76 mm laminated safety glass



Kronos round



| Length: 65 mm
| Height: 45 mm
| Preset to 10.76 mm
| Sales unit: 4 pieces

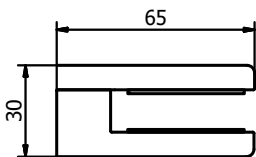


Connection	flat	Ø 42.4 mm	Ø 48.3 mm
	Art. no.	Art. no.	Art. no.
	12.5500.000.31	12.5500.420.31	12.5500.480.31

Kronos, RAL



| Length: 65 mm
| Height: 45 mm
| Sales unit: 4 pieces



Connection	flat	Ø 42.4 mm	Ø 48.3 mm
RAL	Art. no.	Art. no.	Art. no.
glossy	12.5500.000.33	12.5500.420.33	12.5500.480.33
structured matt	12.5500.000.36	12.5500.420.36	12.5500.480.36
matt	12.5500.000.38	12.5500.420.38	12.5500.480.38

Kronos square



| Length: 65 mm
| Height: 45 mm
| Preset to 10.76 mm
| Sales unit: 4 pieces

Connection	flat	Ø 42.4 mm	Ø 48.3 mm
	Art. no.	Art. no.	Art. no.
	12.5510.000.31	12.5510.420.31	12.5510.480.31

Kronos, RAL



| Length: 65 mm
| Height: 45 mm
| Sales unit: 4 pieces

Connection	flat	Ø 42.4 mm	Ø 48.3 mm
RAL	Art. no.	Art. no.	Art. no.
glossy	12.5510.000.33	12.5510.420.33	12.5510.480.33
structured matt	12.5510.000.36	12.5510.420.36	12.5510.480.36
matt	12.5510.000.38	12.5510.420.38	12.5510.480.38



Kronos glass support, lateral



Will you mount Kronos all by yourself?!

These glass supports offer a 100% slip protection without drill holes in the glass. The glass is perfectly held in place by these supports.

- | left and right each
- | Sales unit: 4 pieces

Model 7055

Art. no.

90.7055.010.41



Kronos glass support for floor glass clamp



Would you like to use the Kronos glass clamp as a floor clamp?

No problem – with the aid of the glass support, the clamp is simply repurposed.

- | Sales unit: 4 pieces

Model 7055

Art. no.

90.7055.020.41

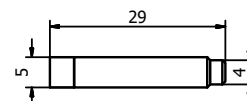


Kronos lock pin



Lock pins must be used for pre-wall installation. They secure the glass against slipping. The locking pin can be used later when the clamp is already closed.

- | Sales unit: 4 pieces



Model 5000

Art. no.

92.5000.029.30

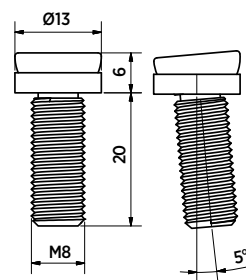
Kronos, adjustable screw M8 x 20 mm

You haven't drilled straight into the post? No problem. Our adjustable screw can easily make up for small differences.

- | Finish exterior application: V4A (exterior)
- | Sales unit: 12 pieces



Model 1050	AISI 316 (exterior)
Art. no.	
91.1050.820.30	



Kronos mounting tool



The Kronos assembly tool is absolutely necessary to adjust the Kronos glass clamp!

- | Sales unit: 1 piece

Model 0100	
Art. no.	
90.0100.150.00	

Application of the Kronos mounting tool

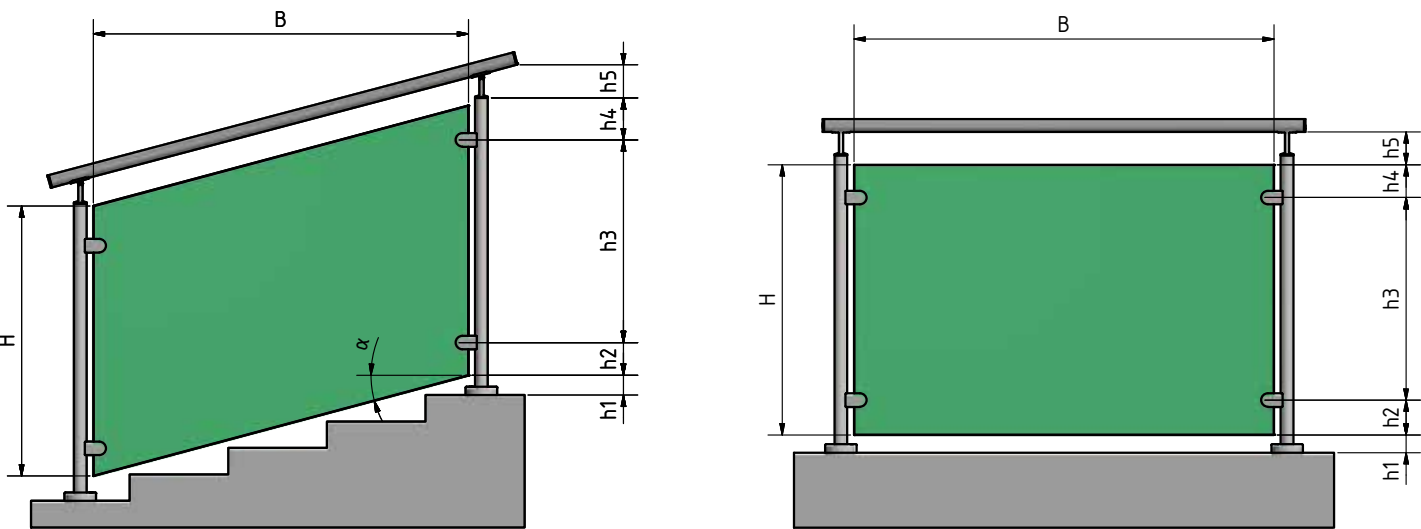


The Allen key of the Kronos mounting tool must be inserted completely through the Kronos clamp in order to adjust the glass thickness.

Both parts of the clamp adjust to keep the glass centered in position.

Installation situation A - without lock pin

Installation situation A describes the use of clamps without lock pin. The glazing is realised with the aid of clamps and posts which are mounted on top of the base plate.


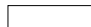


Designation	Meaning	Min. dimension [mm]	Max. dimension [mm]
H	Glass height	800	1100
B	Glass width	500	1600
h1	Floor upper edge - glass edge at bottom	10	120
h2	Glass edge at bottom - clamp centre axis at bottom	100	250
h3	Distance between clamps	500	700
h4	Glass edge on top - clamp centre axis on top	100	250
h5	Distance to glass edge on top - handrail	10-30	
α	Angle to horizontal line	0°	41°

,

Possible dimensions / wind loads as per type statics for exterior applications without posts

		Without lock pin						With lock pin						
		Laminated safety glass made of float glass	Laminated safety glass made of thermally toughened glass			Laminated safety glass made of tempered glass / tempered glass (heat soak test)			Laminated safety glass made of thermally toughened glass			Laminated safety glass made of tempered glass / tempered glass (heat soak test)		
		2 x 6 mm	2 x 4 mm	2 x 5 mm	2 x 6 mm	2 x 4 mm	2 x 5 mm	2 x 6 mm	2 x 4 mm	2 x 5 mm	2 x 6 mm	2 x 4 mm	2 x 5 mm	2 x 6 mm
Width: 500 mm	0.50 kN/m²													
	1.00 kN/m²													
	1.50 kN/m²													
	2.00 kN/m²													
	2.50 kN/m²													
Width: 750 mm	0.50 kN/m²													
	1.00 kN/m²													
	1.50 kN/m²													
	2.00 kN/m²													
	2.50 kN/m²													
Width: 1000 mm	0.50 kN/m²													
	1.00 kN/m²													
	1.50 kN/m²													
	2.00 kN/m²													
	2.50 kN/m²													
Width: 1300 mm	0.50 kN/m²													
	1.00 kN/m²													
	1.50 kN/m²													
	2.00 kN/m²													
	2.50 kN/m²													
Width: 1600 mm	0.50 kN/m²													
	1.00 kN/m²													
	1.50 kN/m²													
	2.00 kN/m²													
	2.50 kN/m²													

 complies with DIN 18008
 does not comply with DIN 18008

GLASS CLAMPS

Glass clamp systems with AbP certificate

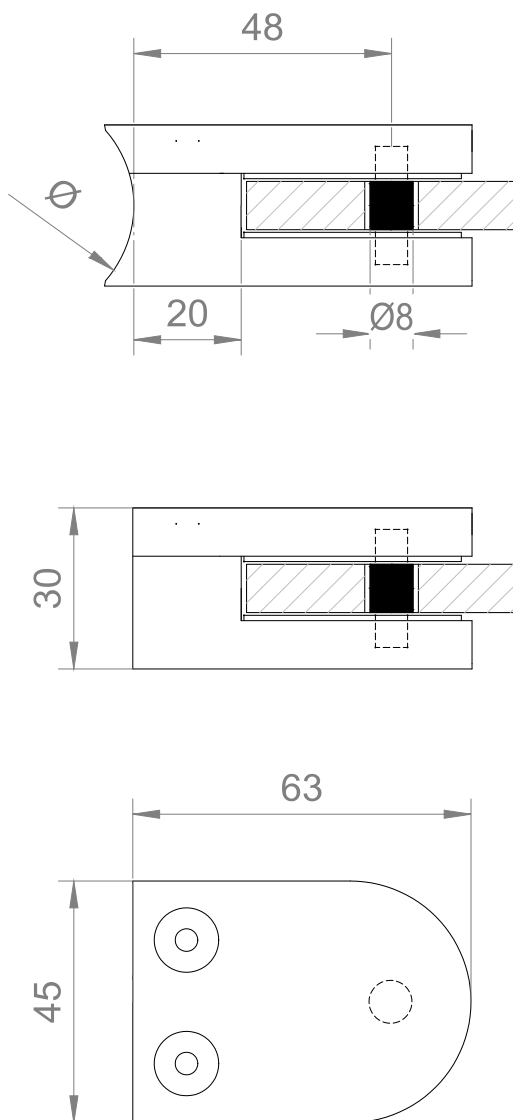
Glass clamps

Don't get clamped – ensure everything stays where it belongs.

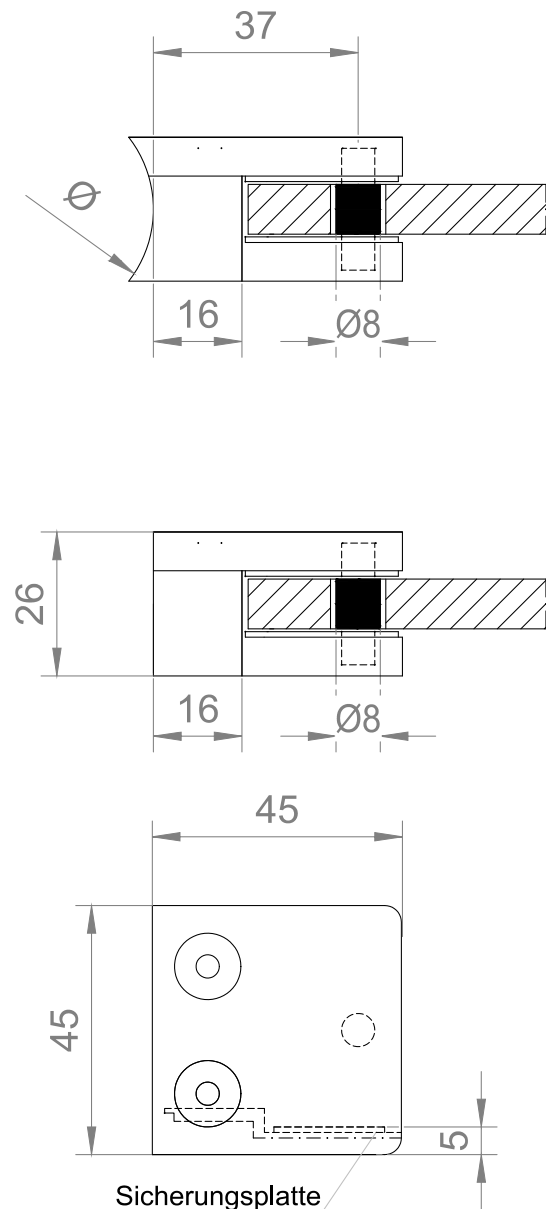
Essential Features

- | Stainless steel clamps in V2A and V4A
- | Suitable for glass of 8-12.76 mm thick
- | Security pin and plate available
- | Mounting flat and 42.4 mm radius
- | Models 5300 and 5310 can be combined

Model 5100



Model 5300*/5310





GLASS CLAMP SYSTEMS WITH ABP CERTIFICATE

Glass clamp



| For 8-12.76 mm thick glass, incl. security pin
| Mounting: flat
| VE: 4 pcs

Modell 5100	
Material	Art. no.
AISI 304	12.5100.000.21
AISI 316	12.5100.000.31

Glass clamp



| For 8-12.76 mm thick glass, incl. security pin
| Mounting: 42.4 mm radius
| VE: 4 pcs

Modell 5100	
Material	Art. no.
AISI 304	12.5100.420.21
AISI 316	12.5100.420.31

Glass clamp



| For 8-10.76 mm thick glass, incl. security pin and security plate
| Mounting: flat
| VE: 4 pcs

Modell 5310	
Material	Art. no.
AISI 304	12.5310.000.21
AISI 316	12.5310.000.31

Glass clamp



| For 8-10.76 mm thick glass, incl. security pin and security plate
| Mounting: 42.4 mm radius
| VE: 4 pcs

Modell 5310	
Material	Art. no.
AISI 304	12.5310.420.21
AISI 316	12.5310.420.31

GLASS CLAMP SYSTEMS WITH ABP CERTIFICATE

Glass clamp



| For 8 - 10.76 mm thick glass
| Mounting: flat
| VE: 4 pcs

Modell 5300	
Material	Art. no.
AISI 304	12.5300.000.21
AISI 316	12.5300.000.31

Glass clamp



| For 8 - 10.76 mm thick glass
| Mounting: 42.4 mm radius
| VE: 4 pcs

Modell 5300	
Material	Art. no.
AISI 304	12.5300.420.21
AISI 316	12.5300.420.31

Glass clamp rubber inlay



| For model 5100
| VE: 8 pcs

Modell 5100	
For glass thickness	Art. no.
8.76 mm	90.5100.008.76
10.76 mm	90.5100.010.76
12.76 mm	90.5100.012.76

Glass clamp rubber inlay



| For models 5300 and 5310
| VE: 8 pcs

Modell 5300 & 5310	
For glass thickness	Art. no.
8.76 mm	90.5300.008.76
10.76 mm	90.5300.010.76





EMPIRE STATE POST

Top mount

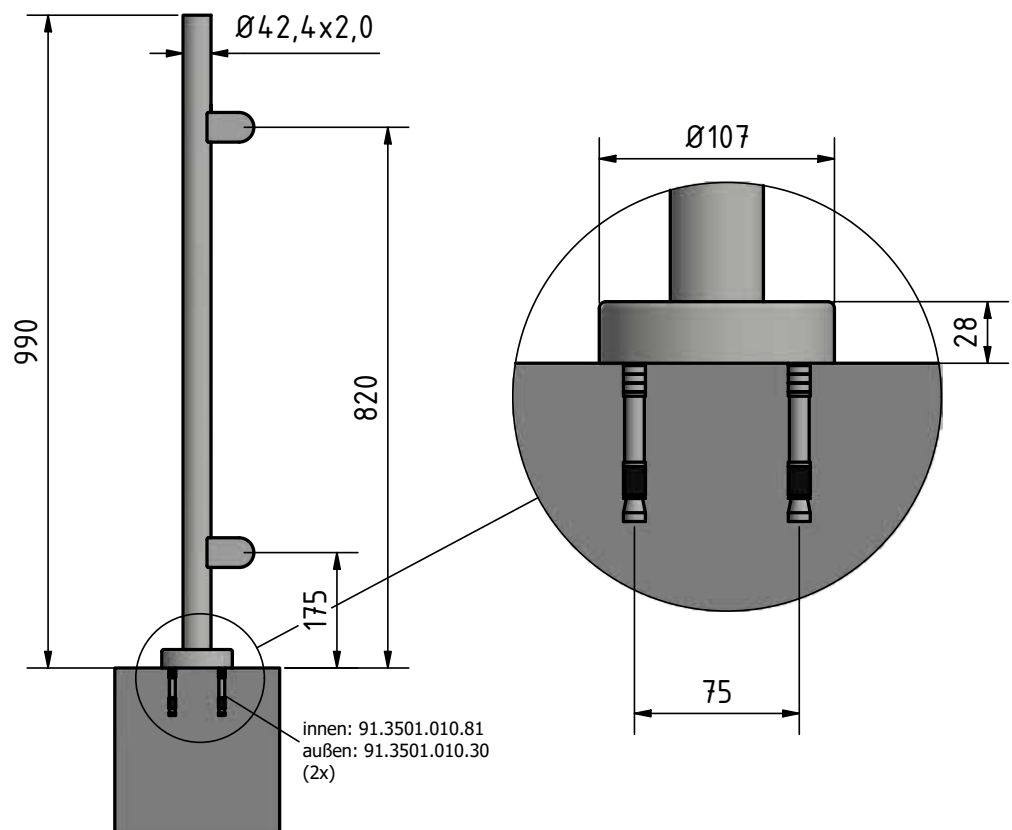
ONLEVEL - NEXT LEVEL UP

Another innovative solution from **ONLEVEL**. The first completely pre-assembled post system for all-glass balustrade systems made of stainless steel! Quick and easy to mount for sure.

ONLEVEL makes things easy. All posts are prepared for installation. That is, the threads for fixing the clamps are already pre-drilled. In case of the "Extended Version", even the adjustable **KRONOS** clamps are pre-assembled. You easily save up to 40 minutes of installation time when compared to all other standard products.

Essential Features

- | Modern design
- | Available with Ø 42.4 mm
- | Available in stainless steel V4A



OOHOHH NEW YORK -
GREW UP IN A TOWN THAT IS
FAMOUS...



Completely pre-assembled
post system

Including the **KRONOS** glass
clamp



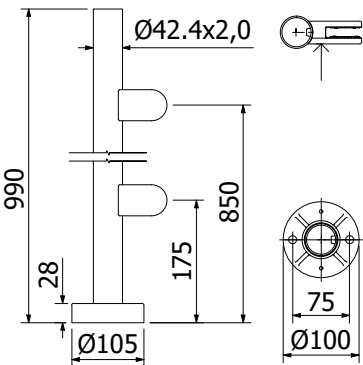
EMPIRE STATE POST + KRONOS

Empire State Post, pre-assembled with KRONOS left



- | Ø 42.4 x 2 mm
- | Height: 990 mm
- | Includes cover caps
- | Includes 2 pre-assembled glass clamps
- | Sales unit: 1 piece

Model 0610	AISI 304 (inside)	AISI 316 (outside)
Diameter	Art. no.	Art. no.
42.4	12.0610.422.21	12.0610.422.31

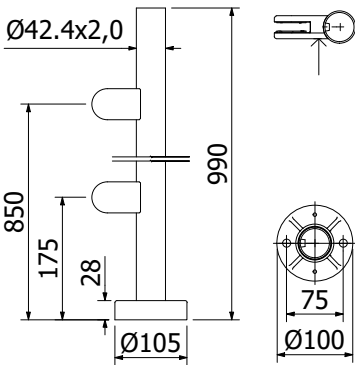


Empire State Post, pre-assembled with KRONOS right



- | Ø 42.4 x 2 mm
- | Height: 990 mm
- | Includes cover caps
- | Includes 2 pre-assembled glass clamps
- | Sales unit: 1 piece

Model 0611	AISI 304 (inside)	AISI 316 (outside)
Diameter	Art. no.	Art. no.
42.4	12.0611.422.21	12.0611.422.31

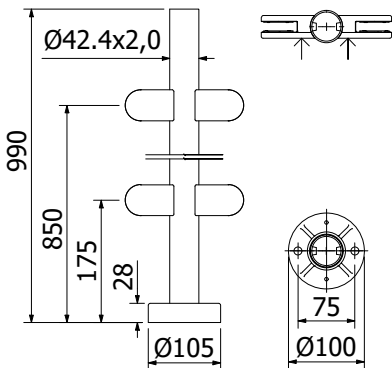


Central Empire State Post, pre-assembled with KRONOS



- | Ø 42.4 x 2 mm
- | Height: 990 mm
- | Includes cover caps
- | Includes 4 pre-assembled glass clamps
- | Sales unit: 1 piece

Model 0612	AISI 304 (inside)	AISI 316 (outside)
Diameter	Art. no.	Art. no.
42.4	12.0612.422.21	12.0612.422.31

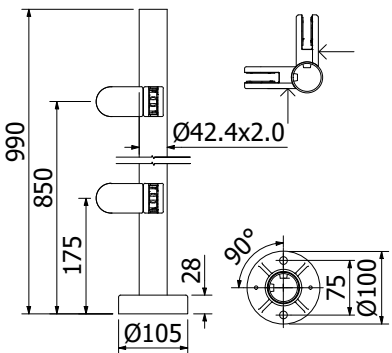


Empire State Corner Post, pre-assembled with KRONOS inside



- | Ø 42.4 x 2 mm
- | Height: 990 mm
- | Includes cover caps
- | Includes 4 pre-assembled glass clamps
- | Sales unit: 1 piece

Model 0613	AISI 304 (inside)	AISI 316 (outside)
Diameter	Art. no.	Art. no.
42.4	12.0613.422.21	12.0613.422.31



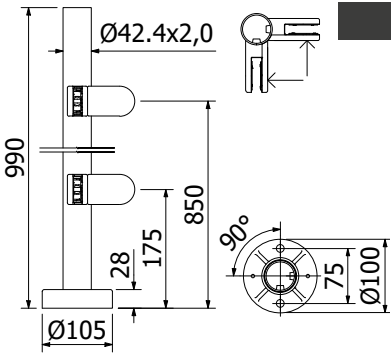
EMPIRE STATE POST + KRONOS

Empire State Corner Post, pre-assembled with KRONOS outside



- | Ø 42.4 x 2 mm
- | Height: 990 mm
- | Includes cover caps
- | Includes 4 pre-assembled glass clamps
- | Sales unit: 1 piece

Model 0614	AISI 304 (inside)	AISI 316 (outside)
Diameter	Art. no.	Art. no.
42.4	12.0614.422.21	12.0614.422.31



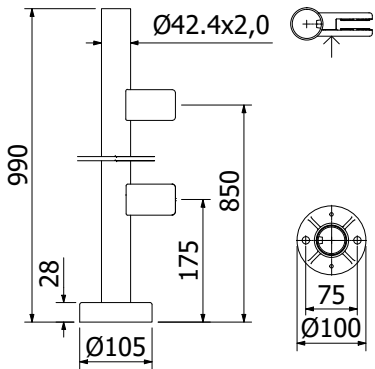
EMPIRE STATE POST + KRONOS SQUARE

Empire State Post, pre-assembled with KRONOS Square left



- | Ø 42.4 x 2 mm
- | Height: 990 mm
- | Includes cover caps
- | Includes 2 pre-assembled glass clamps
- | Sales unit: 1 piece

Model 0620	AISI 304 (inside)	AISI 316 (outside)
Diameter	Art. no.	Art. no.
42.4	12.0620.422.21	12.0620.422.31

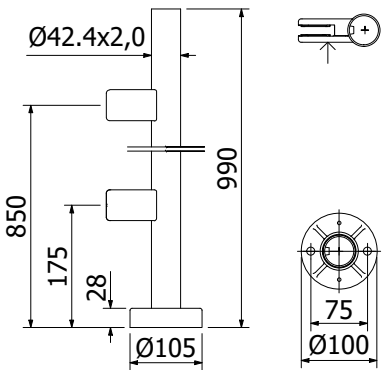


Empire State Post, pre-assembled with KRONOS Square right



- | Ø 42.4 x 2 mm
- | Height: 990 mm
- | Includes cover caps
- | Includes 2 pre-assembled glass clamps
- | Sales unit: 1 piece

Model 0621	AISI 304 (inside)	AISI 316 (outside)
Diameter	Art. no.	Art. no.
42.4	12.0621.422.21	12.0621.422.31

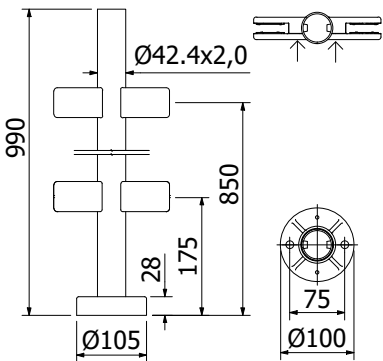


Central Empire State Post, pre-assembled with KRONOS Square



- | Ø 42.4 x 2 mm
- | Height: 990 mm
- | Includes cover caps
- | Includes 4 pre-assembled glass clamps
- | Sales unit: 1 piece

Model 0622	AISI 304 (inside)	AISI 316 (outside)
Diameter	Art. no.	Art. no.
42.4	12.0622.422.21	12.0622.422.31

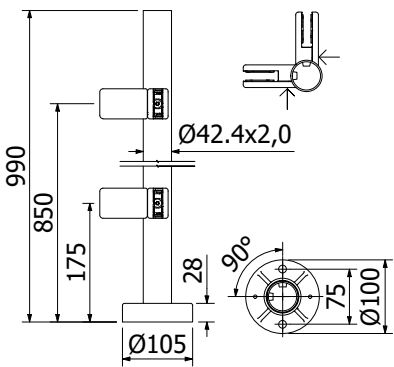


Empire State Corner Post, pre-assembled with KRONOS Square inside



- | Ø 42.4 x 2 mm
- | Height: 990 mm
- | Includes cover caps
- | Includes 4 pre-assembled glass clamps
- | Sales unit: 1 piece

Model 0623	AISI 304 (inside)	AISI 316 (outside)
Diameter	Art. no.	Art. no.
42.4	12.0623.422.21	12.0623.422.31



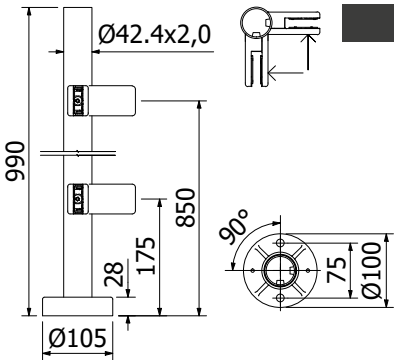
EMPIRE STATE POST + KRONOS SQUARE

Empire State Corner Post, pre-assembled with KRONOS Square outside



- | Ø 42.4 x 2 mm
- | Height: 990 mm
- | Includes cover caps
- | Includes 4 pre-assembled glass clamps
- | Sales unit: 1 piece

Model 0624	AISI 304 (inside)	AISI 316 (outside)
Diameter	Art. no.	Art. no.
42.4	12.0624.422.21	12.0624.422.31



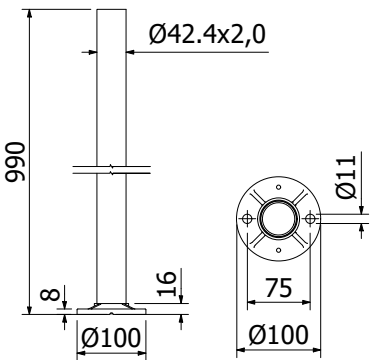
EMPIRE STATE POST

Empire State Post



- | Ø 42,4 x 2 mm
- | Height: 990 mm
- | Without threaded holes
- | Sales unit: 1 piece

Model 0600	AISI 304 (inside)	AISI 316 (outside)
Diameter	Art. no.	Art. no.
42.4	12.0600.422.21	12.0600.422.31

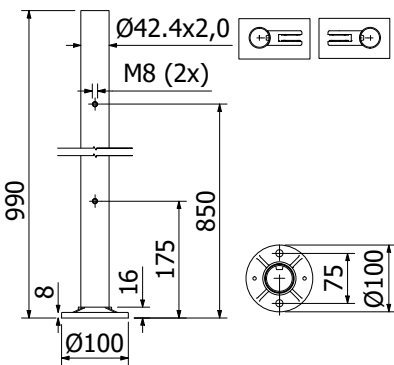


Empire State End Post



- | Ø 42,4 x 2 mm
- | Height: 990 mm
- | With 2 M8 threaded holes
for use on the left and right
- | Sales unit: 1 piece

Model 0601	AISI 304 (inside)	AISI 316 (outside)
Diameter	Art. no.	Art. no.
42.4	12.0601.422.21	12.0601.422.31

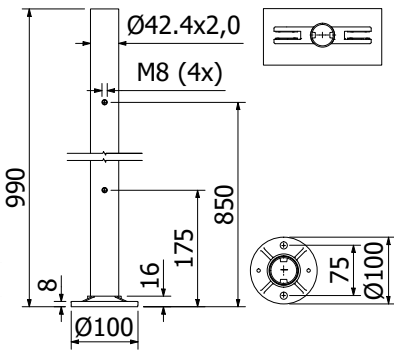


Central Empire State End Post



- | Ø 42,4 x 2 mm
- | Height: 990 mm
- | With 2 M8 threaded holes each / 180°
- | Sales unit: 1 piece

Model 0602	AISI 304 (inside)	AISI 316 (outside)
Diameter	Art. no.	Art. no.
42.4	12.0602.422.21	12.0602.422.31

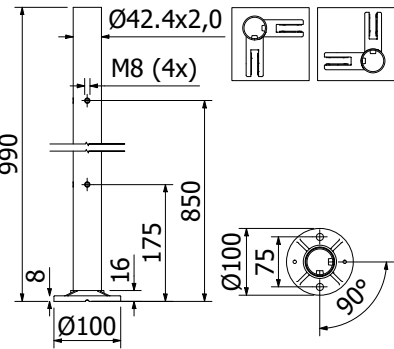


Empire State Corner Post



- | Ø 42,4 x 2 mm
- | Height: 990 mm
- | With 2 M8 threaded holes each / 90°
suitable for interior and exterior applications
- | Sales unit: 1 piece

Model 0603	AISI 304 (inside)	AISI 316 (outside)
Diameter	Art. no.	Art. no.
42.4	12.0603.422.21	12.0603.422.31



EMPIRE STATE POST | RODS AND ROD HOLDERS

Empire State Post Rod



| Ø 12 mm
| Length: 3 m
| Sales unit: 1 piece

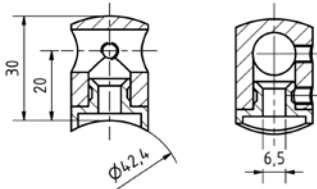
Model 0250	AISI 316 (outside)
Length	Art. no.
3000 mm	12.0103.120.31

Empire State Post Rod Holder



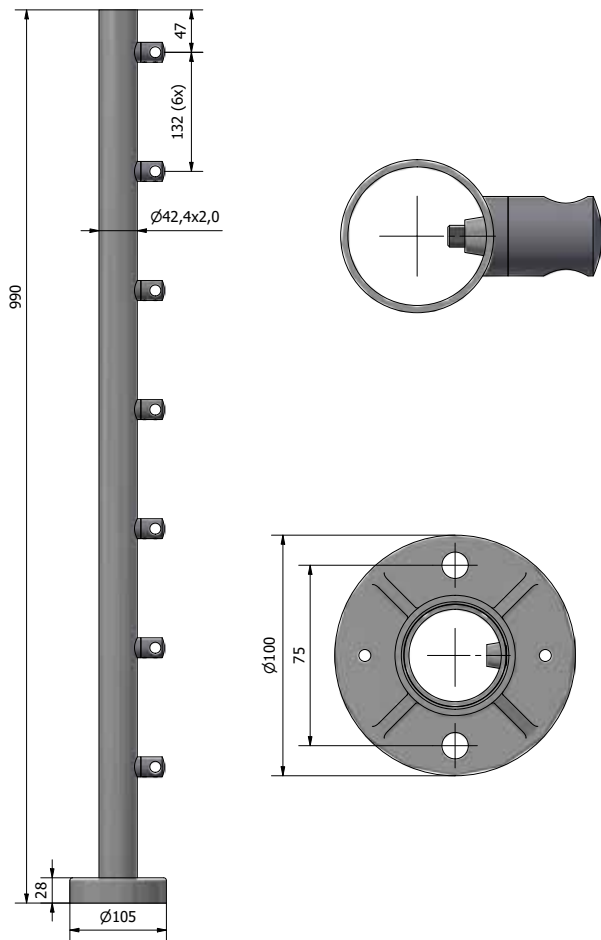
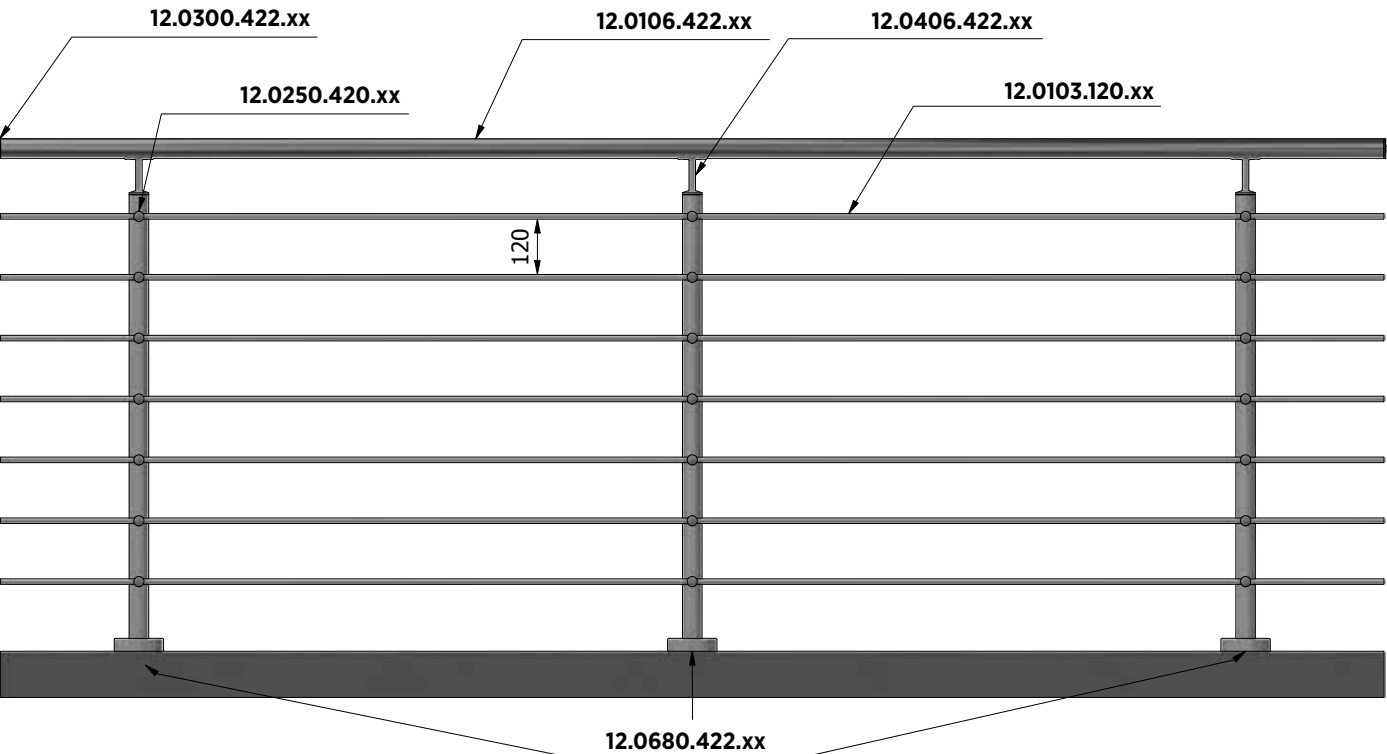
| Ø 12 mm
| Sales unit: 12 pieces

Model 0250	AISI 316 (outside)
Connector	Art. no.
flat	12.0250.000.31
for Ø 42.4	12.0250.420.31



EMPIRE STATE POST | RODS AND ROD HOLDERS

Empire State Post with rod, top mount



EMPIRE STATE POST | ACCESSORIES

Fischer fixing anchor for concrete FAZ II 10/10



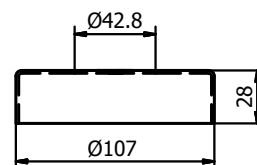
- | Finish interior application: zinc-plated steel (inside)
- | Finish exterior application: V4A (exterior)
- | Required number: 2 pieces
- | M10
- | Sales unit: 50 pieces

Model 3501	zinc-plated steel (inside)	AISI 316 (exterior)
	Art. no.	Art. no.
	91.3501.010.81	91.3501.010.30

Empire State Post Cover Cap



- | Outer diameter: Ø 107 mm
- | Drilling Hole: Ø 42.4 mm
- | Sales unit: 2 pieces

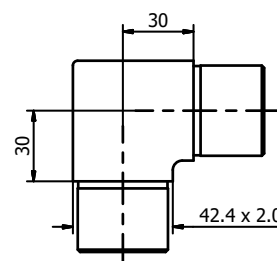


Model 0500	AISI 304 (inside)	AISI 316 (outside)
Diameter	Art. no.	Art. no.
107	12.0500.420.21	12.0500.420.31

Empire State Post Corner Connector 90°



- | Ø 42.4 x 2 mm
- | Sales unit: 2 pieces



Model 0211	AISI 304 (inside)	AISI 316 (outside)
Diameter	Art. no.	Art. no.
42.4	12.0211.422.21	12.0211.422.31

Empire State Post Corner Connector, adjustable



- | Ø 42.4 x 2 mm
- | Sales unit: 2 pieces

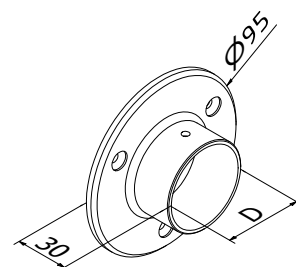
Model 0215	AISI 304 (inside)	AISI 316 (outside)
Diameter	Art. no.	Art. no.
42.4	12.0215.422.21	12.0215.422.31

EMPIRE STATE POST | ACCESSORIES

Empire State Post Wall Connector



- | Ø 42.4 x 2 mm
- | With 3 drill holes
- | Sales unit: 2 pieces

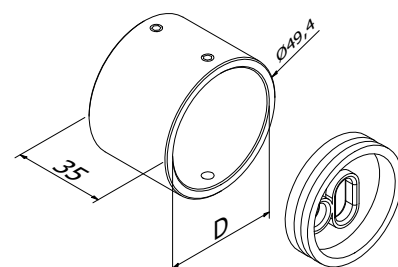


Model 0220	AISI 304 (inside)	AISI 316 (outside)
Diameter	Art. no.	Art. no.
42.4	12.0220.420.21	12.0220.420.31

Empire State Post Wall Connector



- | Ø 42.4 x 2 mm
- | Sales unit: 2 pieces

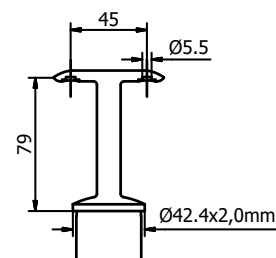


Model 0221	AISI 304 (inside)	AISI 316 (outside)
Diameter	Art. no.	Art. no.
42.4	12.0221.420.21	12.0221.420.31

Empire State Post Handrail Support



- | Ø 42.4 x 2 mm
- | Sales unit: 2 pieces

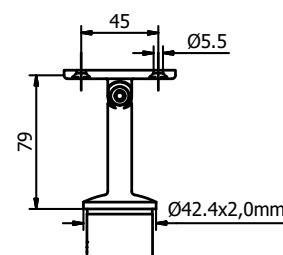


Model 0460	AISI 304 (inside)	AISI 316 (outside)
Diameter	Art. no.	Art. no.
42.4	12.0460.422.21	12.0460.422.31

Empire State Handrail Support, adjustable



- | Ø 42.4 x 2 mm
- | Sales unit: 2 pieces



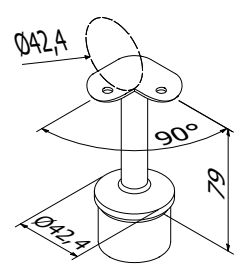
Model 0465	AISI 304 (inside)	AISI 316 (outside)
Diameter	Art. no.	Art. no.
42.4	12.0465.422.21	12.0465.422.31

EMPIRE STATE POST | ACCESSORIES

Empire State Post Handrail Support Corner



| Ø 42,4 x 2 mm
| Sales unit: 2 pieces

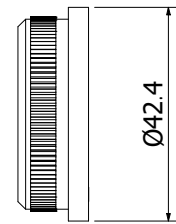


Model 0460	AISI 304 (inside)	AISI 316 (outside)
Diameter	Art. no.	Art. no.
42,4	12.0461.422.21	12.0461.422.31

End cap, flat



| Sales unit: 2 pieces

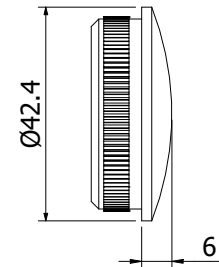


Model 0300	AISI 304 (inside)	AISI 316 (outside)
Diameter	Art. no.	Art. no.
42.4 x 2	12.0300.422.21	12.0300.422.31

End cap, curved



| Sales unit: 2 pieces



Model 0310	AISI 304 (inside)	AISI 316 (outside)
Diameter	Art. no.	Art. no.
42.4 x 2	12.0310.422.21	12.0310.422.31

Flange



| Sales unit: 1 piece

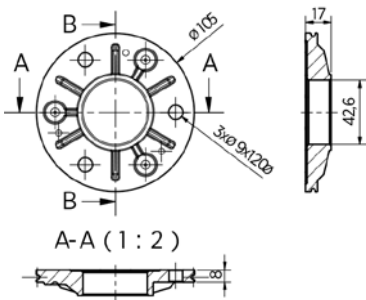
Model 0352	AISI 304 (inside)	AISI 316 (outside)
Diameter	Art. no.	Art. no.
42,4	12.0352.422.20	12.0352.422.30

Flange



| Sales unit: 1 piece

Model 0353	AISI 304 (inside)	AISI 316 (outside)
Diameter	Art. no.	Art. no.
42,4	12.0353.422.20	12.0353.422.30

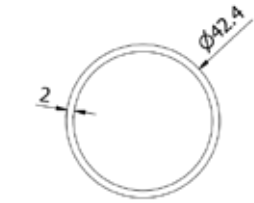


HANDRAILS

Handrail tube



| Length: 6000 mm
| Sales unit: 1 piece

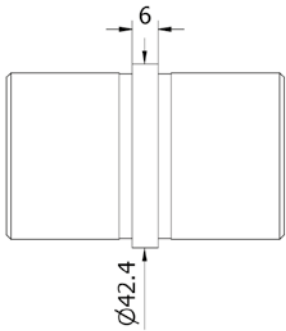


Model 0106	AISI 304 (inside)	AISI 316 (outside)
Diameter	Art. no.	Art. no.
42.4 x 2	12.0106.422.21	12.0106.422.31

Tube connector, straight



| Sales unit: 2 pieces

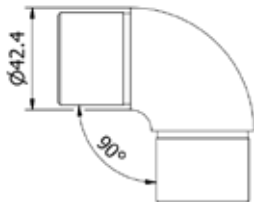


Model 0200	AISI 304 (inside)	AISI 316 (outside)
Diameter	Art. no.	Art. no.
42.4 x 2	12.0200.422.21	12.0200.422.31

Tube connector 90°



| Sales unit: 2 pieces



Model 0210		AISI 304 (inside)	AISI 316 (outside)
Diameter	Length	Art. no.	Art. no.
42.4 x 2	30	12.0210.422.21	12.0210.422.31

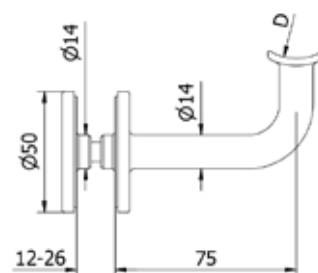
HANDRAILS

Glass handrail support



- | For glass thicknesses between 12 mm and 26 mm
- | Drill hole in glass Ø 18 mm
- | Sales unit: 2 pieces

Model 0420	AISI 304 (inside)	RVS 316
Connector	Art. no.	Art. no.
flat	12.0420.000.21	12.0420.000.31
for Ø 42.4	12.0420.420.21	12.0420.420.31

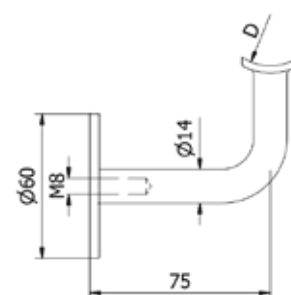


Wall handrail support



- | M8 inner thread
- | Sales unit: 2 pieces

Model 0400	AISI 304 (inside)	AISI 316 (outside)
Connector	Art. no.	Art. no.
flat	12.0400.000.21	12.0400.000.31
for Ø 42.4	12.0400.420.21	12.0400.420.31

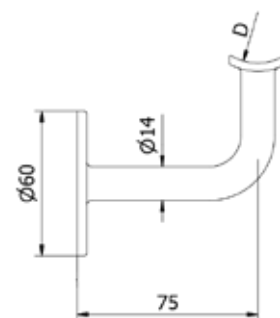


Wall handrail support



- | 3 mounting holes
- | Sales unit: 2 pieces

Model 0410	AISI 304 (inside)	AISI 316 (outside)
Connector	Art. no.	Art. no.
flat	12.0410.000.21	12.0410.000.31
for Ø 42.4	12.0410.420.21	12.0410.420.31

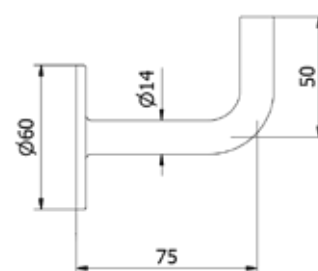


Wall handrail support for welding



- | 3 mounting holes
- | Sales unit: 2 pieces

Model 0450	AISI 304 (inside)	AISI 316 (outside)
	Art. no.	Art. no.
	12.0450.000.21	12.0450.000.31



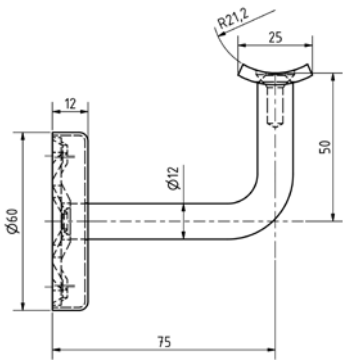
HANDRAILS

Wall Handrail Support with Bracket and CLIP-ON Escutcheon



- | 3 fixing holes
- | H = 60 mm
- | Sales unit: 2 pieces

Model 0415	AISI 304 (inside)
Connector	Art. no.
flat	12.0415.000.21
for Ø 42.4	12.0415.420.21

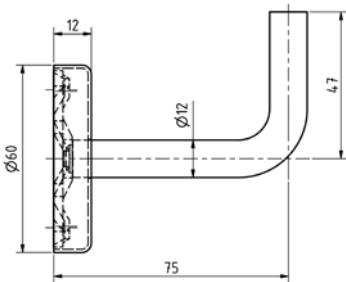


Wall Handrail Support for Welding with CLIP-ON Escutcheon



- | Sales unit: 2 pieces

Model 0455	AISI 304 (inside)
Connector	Art. no.
flat	12.0455.000.21

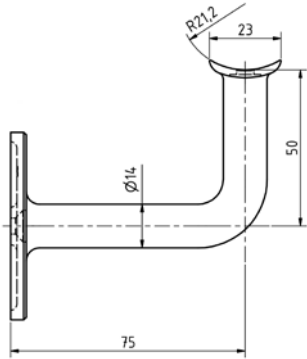


Wall Handrail Support with Bracket



- | 2 fixing holes
- | Sales unit: 2 pieces

Model 0411	AISI 304 (inside)
Connector	Art. no.
flat	12.0411.000.21
for Ø 42.4	12.0411.420.21

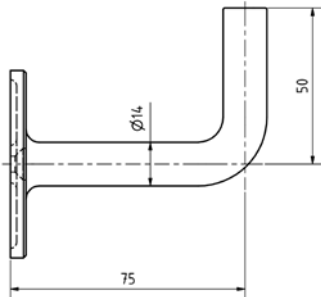


Wall Handrail Support for Welding

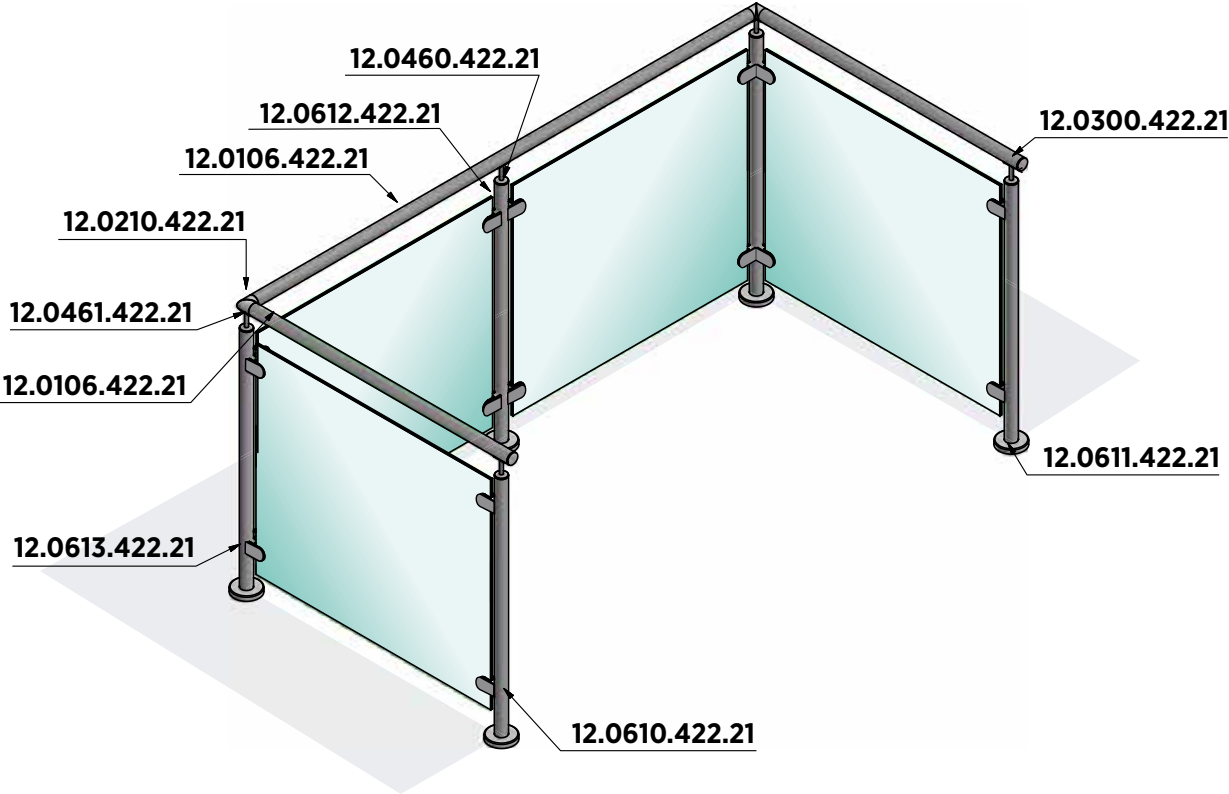
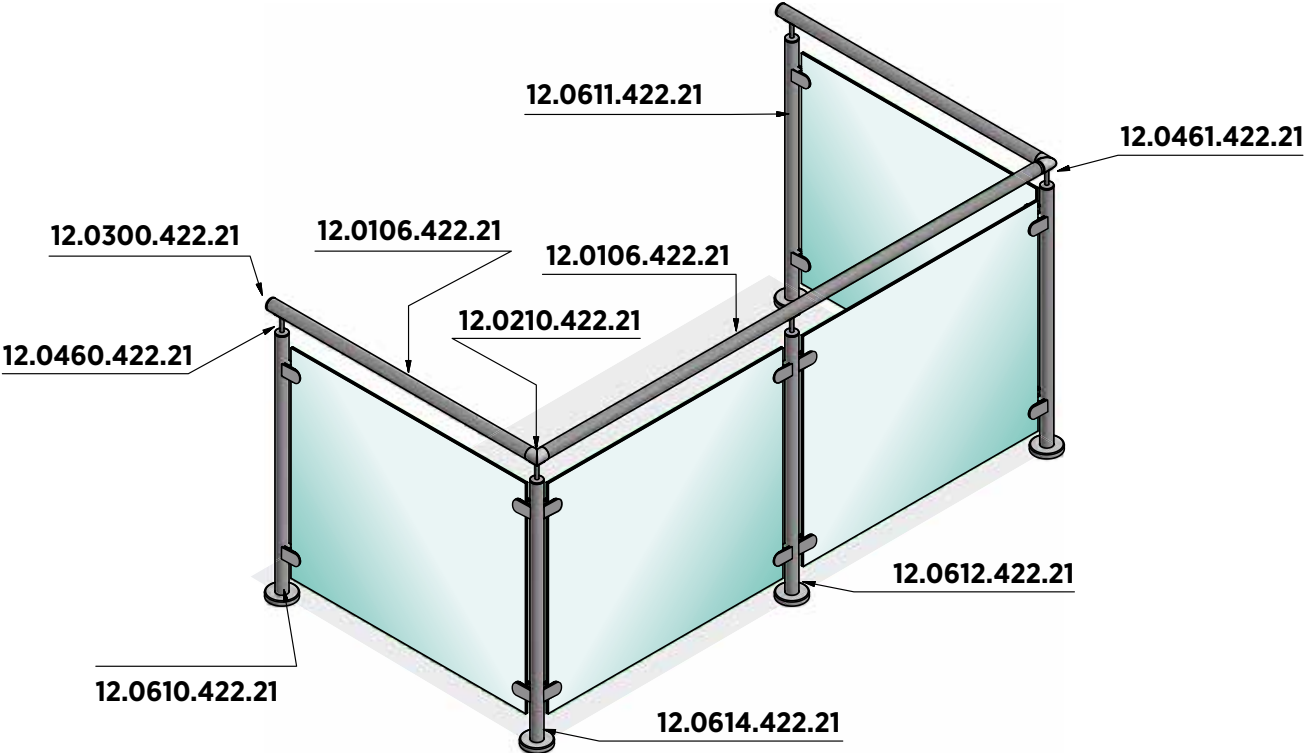


- | 2 fixing holes
- | Sales unit: 2 pieces

Model 0451	AISI 304 (inside)
Connector	Art. no.
flat	12.0451.000.21



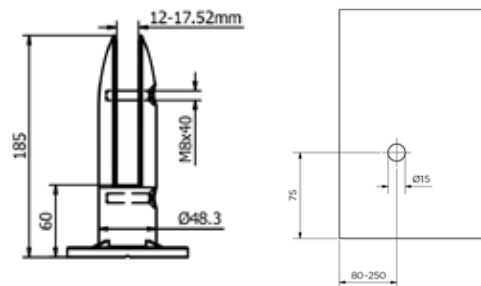
EMPIRE STATE POST | INSTALLATION EXAMPLES



Floor glass clamp



- | Ø 48.3 mm
- | Height: 185 mm
- | Glass thicknesses 12 - 17.52 mm
- | Sales unit: 1 piece



Model 2448	AISI 304 (inside)
Art. no.	
12.2448.185.21	

Rubber for Rocket floor glass clamp



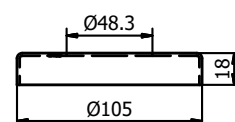
- | Sales unit: 1 piece

Model 5000	Plastic
for glass thickness	Art. no.
12 mm	90.5000.012.00
12.76 mm	90.5000.012.76
13.52 mm	90.5000.013.52
15 mm	90.5000.015.00
16.76 mm	90.5000.016.76
17.52 mm	90.5000.017.52

Cover cap for Rocket floor glass clamp



- | Ø 100 mm
- | Sales unit: 2 pieces

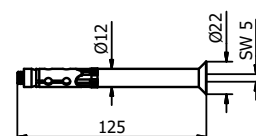


Model 0500	AISI 304 (inside)	AISI 316 (outside)
Art. no.		Art. no.
12.0500.480.21		12.0500.480.31

Fischer fixing anchor FH II 12/50 SK



- | Finish interior application: zinc-plated steel (inside)
- | Finish exterior application: V4A (exterior)
- | Required number per 2500 mm: 17 pieces
- | Sales unit: 25 pieces



Model 3511	zinc-plated steel (inside)	AISI 316 (exterior)
Art. no.		Art. no.
91.3511.250.81		91.3511.250.30

POINT FIXINGS AND HANDRAILS

42 POINT FIXINGS

50 HANDRAILS

TL-20 | POINT FIXINGS

Side Mount

One Point Goes To...

ON**LEVEL** point fixing systems make the difference. ON**LEVEL** always attaches great importance to simple mounting and an unobtrusive design. With our point fixings, realising constructive special solutions becomes very easy. Here as well, practical relevance is our maxim. Tested in innumerable projects.



TESTED
according to
BS6180

For simple constructions
in individual applications

Available with
different diameters



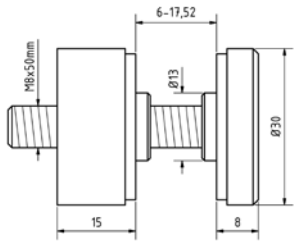
Adjustable versions
available

TL-20 | SIDE MOUNT

Point fixing Ø 30 mm



- | Finish inside: V2A
- | Finish outside: V4A
- | These adaptors are not suitable as a fall protection
- | Sales unit: 2 pieces

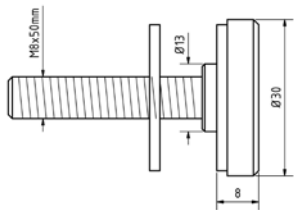


Model 2030	AISI 304 (inside)	AISI 316 (outside)
	Art. no.	Art. no.
	10.2030.200.21	10.2030.200.31

Point fixing Ø 30 mm



- | Finish inside: V2A
- | Finish outside: V4A
- | These adaptors are not suitable as a fall protection
- | Sales unit: 2 pieces

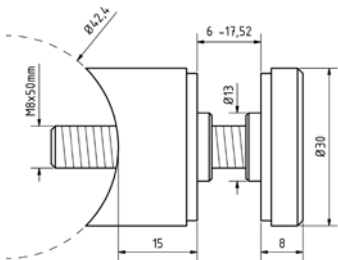


Model 2230	AISI 304 (inside)	AISI 316 (outside)
	Art. no.	Art. no.
	10.2230.000.21	10.2230.000.31

Point fixing Ø 30 mm



- | Connector: round 42.4 mm
- | Finish inside: V2A
- | Finish outside: V4A
- | These adaptors are not suitable as a fall protection
- | Sales unit: 2 pieces

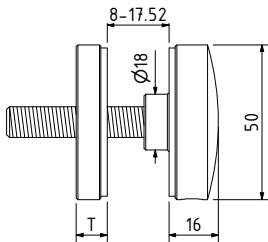


Model 2030	AISI 304 (inside)	AISI 316 (outside)
	Art. no.	Art. no.
	10.2030.420.21	10.2030.420.31

Point fixing Ø 50 mm



- | Finish inside: V2A
- | Finish outside: V4A
- | Sales unit: 2 pieces



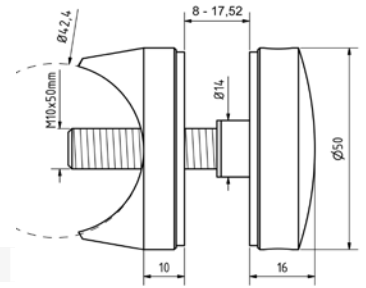
Model 2050		AISI 304 (inside)	AISI 316 (outside)
Depth	Length	Art. no.	Art. no.
10 mm	60 mm	10.2050.100.21	10.2050.100.31
20 mm	70 mm	10.2050.200.21	10.2050.200.31
30 mm	80 mm	10.2050.300.21	10.2050.300.31
40 mm	80 mm	10.2050.400.21	10.2050.400.31
50 mm	90 mm	10.2050.500.21	10.2050.500.31

TL-20 | SIDE MOUNT

Point fixing Ø 50 mm



- | Connector: round 42.4 mm
- | Finish inside: V2A
- | Finish outside: V4A
- | Sales unit: 2 pieces

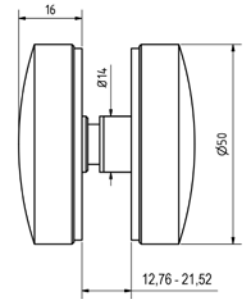


Model 2050	AISI 304 (inside)	AISI 316 (outside)
	Art. no.	Art. no.
	10.2050.420.21	10.2050.420.31

Point fixing Ø 50 mm



- | Finish inside: V2A
- | Finish outside: V4A
- | Sales unit: 2 pieces

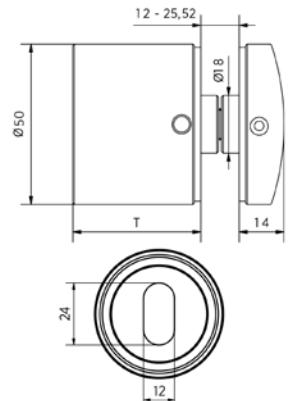


Model 2850	AISI 304 (inside)	AISI 316 (outside)
	Art. no.	Art. no.
	10.2850.000.21	10.2850.000.31

Point fixing Ø 50 mm, adjustable



- | Finish inside: V2A
- | Finish outside: V4A
- | Sales unit: 2 pieces

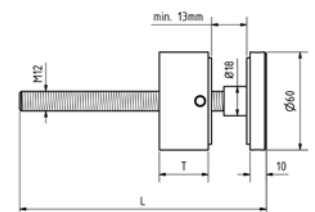


Model 2550	AISI 304 (inside)	AISI 316 (outside)
Depth	Art. no.	Art. no.
30 mm	10.2550.300.21	10.2550.300.31
40 mm	10.2550.400.21	10.2550.400.31
50 mm	10.2550.500.21	10.2550.500.31

Point fixing Ø 60 mm, 0.74 kN



- | Finish inside: V2A
- | Finish outside: V4A
- | Sales unit: 2 pieces



Model 2060	AISI 304 (inside)	AISI 316 (outside)
Depth	Length	Art. no.
10 mm	120 mm	10.2060.100.21
20 mm	130 mm	10.2060.200.21
30 mm	140 mm	10.2060.300.21
40 mm	150 mm	10.2060.400.21
50 mm	160 mm	10.2060.500.21

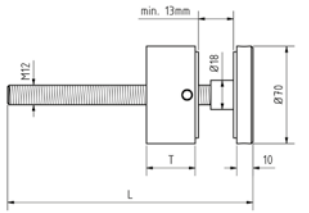
TL-20 | SIDE MOUNT

Point fixing Ø 70 mm



- | Finish inside: V2A
- | Finish outside: V4A
- | Sales unit: 2 pieces

Model 2070		AISI 304 (inside)	AISI 316 (outside)
Depth	Length	Art. no.	Art. no.
10 mm	120 mm	10.2070.100.21	10.2070.100.31
20 mm	130 mm	10.2070.200.21	10.2070.200.31
30 mm	140 mm	10.2070.300.21	10.2070.300.31
40 mm	150 mm	10.2070.400.21	10.2070.400.31
50 mm	160 mm	10.2070.500.21	10.2070.500.31

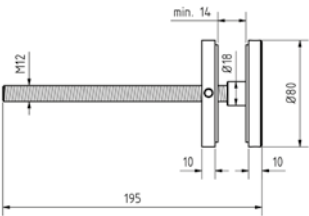


Point fixings Ø 80 mm



- | Finish inside: V2A
- | Finish outside: V4A
- | Sales unit: 2 pieces

Model 2080		AISI 304 (inside)	AISI 316 (outside)
		Art. no.	Art. no.
		10.2080.100.21	10.2080.100.31

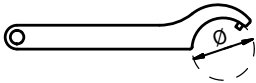


Trans Level Tool

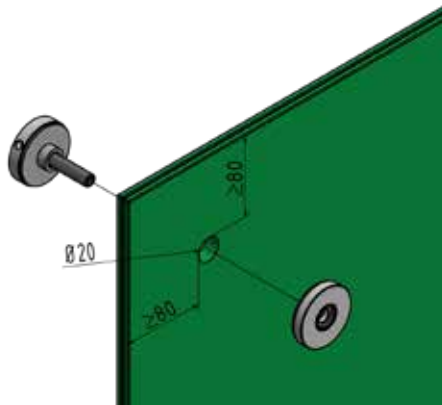
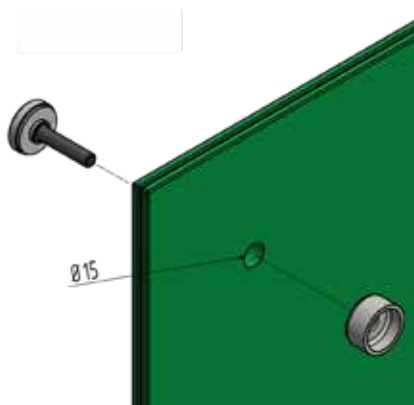
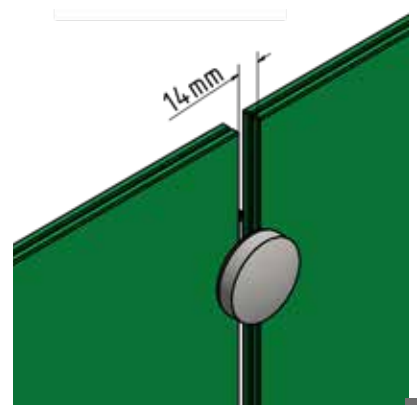
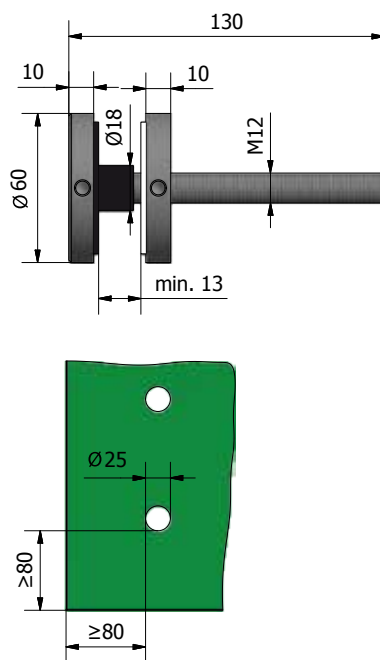
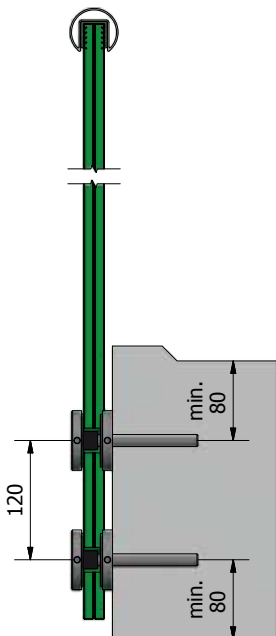
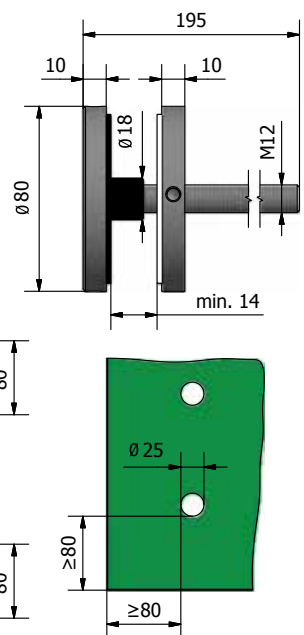
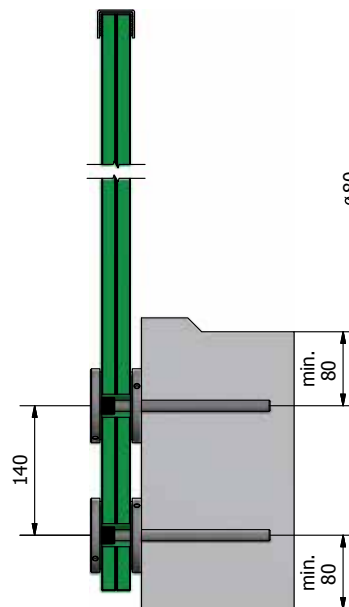


- | Suitable for Onlevel TL-20 systems
- | Sales unit: 1 piece

Model 0201	Zinc-plated steel
Diameter	Art. no.
20	93.0201.020.00
30	93.0201.030.00
40	93.0201.040.00
50	93.0201.050.00
60	93.0201.060.00
70	93.0201.070.00
80	93.0201.080.00



TL-20 | SIDE MOUNT

TL-2030/2230**TL-2050****TL-2850****TL-2060****TL-2080**

TL-20 | SIDE MOUNT

Point fixings Ø 50 mm | adjustable even after mounting

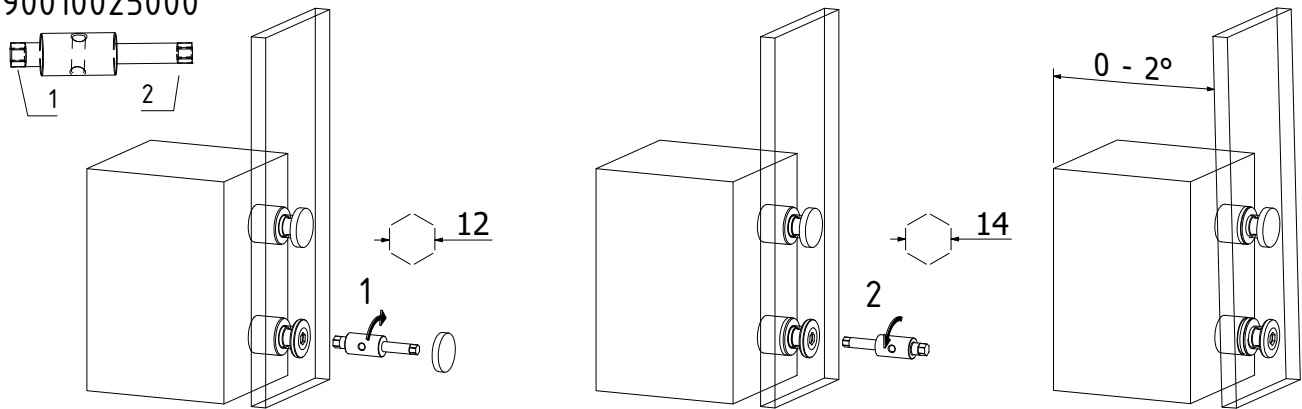


This unique glass adaptor is an addition to Onlevel's complete range. The adaptor with a diameter of 50mm has the feature to be adjustable after the glass has been fitted. This adjustability is done with a special tool.

- | for glass thickness 16.76-21.52mm
- | Sales unit: 1 piece

Modell 2750	AISI 304 (inside)	AISI 316 (outside)
	Art. no.	Art. no.
	10.2750.025.21	10.2750.025.31

90010025000

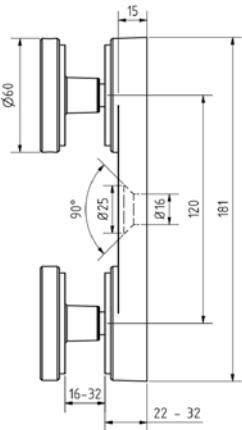


TL-20 | SIDE MOUNT

Point fixings



- | Distance to the wall 15 mm
- | Finish outside: V4A
- | Height: 181 mm
- | Distance between drill holes: 120 mm
- | Sales unit: 2 pieces



Model 2160	AISI 304 (inside)	AISI 316 (outside)
Diameter	Art. no.	Art. no.
60	10.2160.100.21	10.2160.100.31

Fischer fixing anchor FH II 15/15Sk

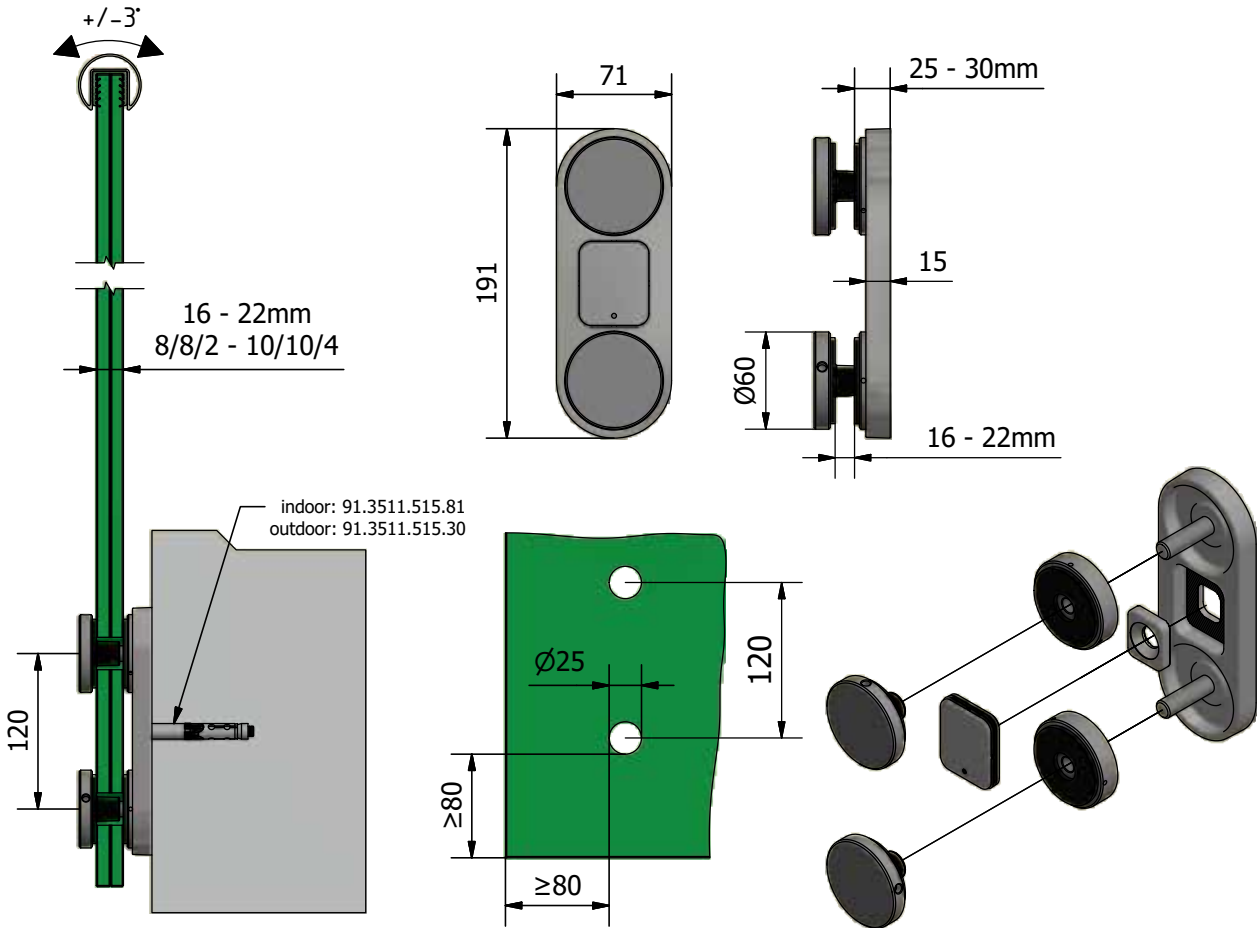


- | Finish interior application: zinc-plated steel (inside)
- | Finish exterior application: V4A (exterior)
- | Required number per adaptor: 1 piece
- | Sales unit: 25 pieces



Model 3511	zinc-plated steel (inside)	AISI 316 (exterior)
	Art. no.	Art. no.
	91.3511.515.30	91.3511.515.81

TL-2160



PERFECT PROTECTION.

If you are looking for a simple and elegant corner protection for your glass balustrades, the **ONLEVEL** handrail is the ideal solution.

It can be easily mounted onto different surfaces: from stainless steel and aluminium up to wood – you can design as you like and leave your individual mark on your project.

Essential Features

- | Simple mounting
- | Simple replacement
- | Great variety of materials and colours

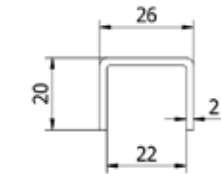


U PROFILES

Handrail U profile, 26 mm



- | Length: 4000 mm
- | 26 x 20 x 2 mm
- | U 22 mm
- | For glass thicknesses up to 17.5 mm
- | Sales unit: 1 piece

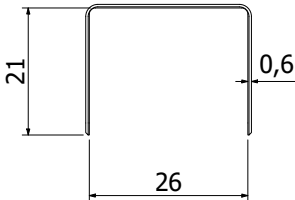


Model 2114	AISI 304 (inside)	AISI 316 (outside)
Length	Art. no.	Art. no.
4000	12.2114.262.21	12.2114.262.31

U profile connector 26 mm



- | Length 40 mm
- | For handrail 26 x 20 x 2 mm
- | For glass thicknesses up to 17.5 mm
- | Sales unit: 1 piece

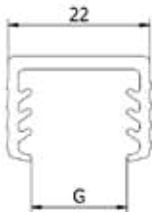


Modell 2114	AISI 316
Length	Art. Nr.
	12.2200.262.31

U handrail rubber seals, 22 mm



- | U handrail rubber seals for 22 mm



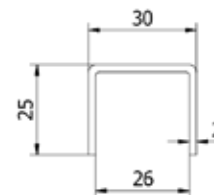
Model 6526		
Length	Glass thickness	Art. no.
5000	8 - 11 mm	90.6526.508.60
25000	8 - 11 mm	90.6526.208.60
5000	11,5 - 13,5 mm	90.6526.511.60
25000	11,5 - 13,5 mm	90.6526.211.60
5000	15 mm	90.6526.515.60
25000	15 mm	90.6526.215.60
5000	16 - 17,5 mm	90.6526.516.60
25000	16 - 17,5 mm	90.6526.216.60

U PROFILES

Handrail U profile, 30 mm



| Length: 4000 mm
| 30 x 25 x 2 mm
| U 26 mm
| For glass thicknesses up to 21.5 mm
| Sales unit: 1 piece

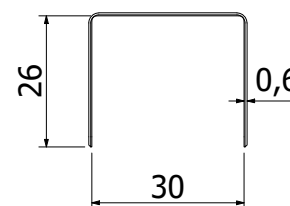


Model 2114	AISI 304 (inside)	AISI 316 (outside)
Length	Art. no.	Art. no.
4000	12.2114.302.21	12.2114.302.31

U profile connector 30 mm



| Length 40 mm
| For handrail 30 x 25 x 2 mm
| For glass thicknesses up to 21.5 mm
| Sales unit: 1 piece

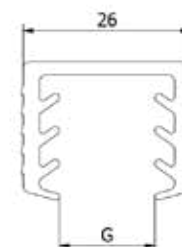


Modell 2114	AISI 316
Length	Art. Nr.
	12.2200.262.31

U handrail rubber seals, 26 mm



| U handrail rubber seals for 26 mm



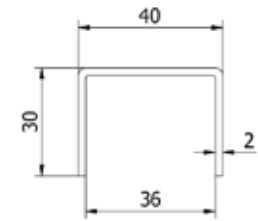
Model 6530		
Length	Glass thickness	Art. no.
5000	8 - 11 mm	90.6530.508.60
25000	8 - 11 mm	90.6530.208.60
5000	11,5 - 13,5 mm	90.6530.511.60
25000	11,5 - 13,5 mm	90.6530.211.60
5000	15 mm	90.6530.515.60
25000	15 mm	90.6530.215.60
5000	16 - 17,5 mm	90.6530.516.60
25000	16 - 17,5 mm	90.6530.216.60
5000	19 mm	90.6530.519.60
25000	19 mm	90.6530.219.60
5000	20 - 21,5 mm	90.6530.520.60
25000	20 - 21,5 mm	90.6530.220.60

U PROFILES

Handrail U profile, 40 mm



- | Length: 4000 mm
- | 40 x 30 x 2 mm
- | U 36 mm
- | For glass thicknesses up to 31.5 mm
- | Sales unit: 1 piece

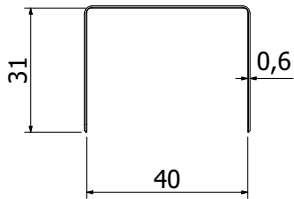


Model 2114	AISI 304 (inside)	AISI 316 (outside)
Length	Art. no.	Art. no.
4000	12.2114.402.21	12.2114.402.31

U profile connector 40 mm



- | Length 40 mm
- | For handrail 40 x 30 x 2 mm
- | For glass thicknesses up to 31.5 mm
- | Sales unit: 1 piece



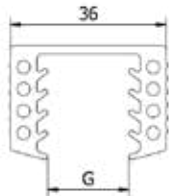
Model 2114	AISI 316
Length	Art. Nr.
	12.2200.262.31

U handrail rubber seals, 36 mm



- | U handrail rubber seals for 36 mm

Model 6540		
Length	Glass thickness	Art. no.
5000	20,5 - 21,5 mm	90.6540.520.60
25000	20,5 - 21,5 mm	90.6540.220.60
5000	24,5 - 25,5 mm	90.6540.524.60
25000	24,5 - 25,5 mm	90.6540.224.60
5000	30,5 - 31,5 mm	90.6540.530.60
25000	30,5 - 31,5 mm	90.6540.230.60

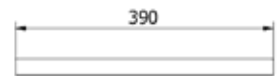


U PROFILES

U profile end piece



| Length: 390 mm
| Sales unit: 2 pieces

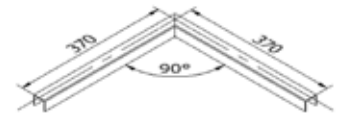


Model 2300	AISI 304 (inside)	AISI 316 (outside)
Height x width	Art. no.	Art. no.
26 x 20	12.2300.262.21	12.2300.262.31
30 x 25	12.2300.302.21	12.2300.302.31
40 x 30	12.2300.402.21	12.2300.402.31

U profile connector 90°



| Length 370 x 370 mm
| Sales unit: 1 piece



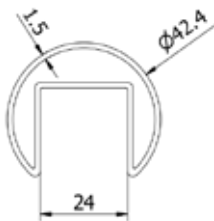
Model 2210	AISI 304 (inside)	AISI 316 (outside)
Height x width	Art. no.	Art. no.
26 x 20	12.2210.262.21	12.2210.262.31
30 x 25	12.2210.302.21	12.2210.302.31
40 x 30	12.2210.402.21	12.2210.402.31

HANDRAIL

Handrail round Ø 42.4 mm



- | Length: 5000 mm
- | Diameter Ø 42.4 x 1.5 mm
- | U 24 mm
- | For glass thicknesses up to 21.52 mm
- | Sales unit: 1 piece



Model 2106	AISI 304 (inside)	AISI 316 (outside)
Length	Art. no.	Art. no.
5000	12.2105.421.21	12.2105.421.31

U handrail rubber seals, 24 mm

- | U handrail rubber seals for 24 mm



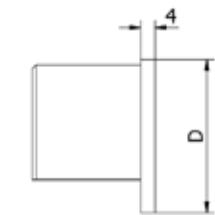
Model 6542		
Length	Glass thickness	Art. no.
6 mtr	8 - 11 mm	90.6542.008.60
25 mtr	8 - 11 mm	90.6542.208.60
6 mtr	11.5 - 13.5 mm	90.6542.011.60
25 mtr	11.5 - 13.5 mm	90.6542.211.60
6 mtr	15 mm	90.6542.015.60
25 mtr	15 mm	90.6542.215.60
6 mtr	16 - 17.5 mm	90.6542.016.60
25 mtr	16 - 17.5 mm	90.6542.216.60
6 mtr	19 mm	90.6542.019.60
25 mtr	19 mm	90.6542.219.60
6 mtr	20 - 21.5 mm	90.6542.020.60
25 mtr	20 - 21.5 mm	90.6542.220.60

HANDRAIL

End cap



| Sales unit: 2 pieces

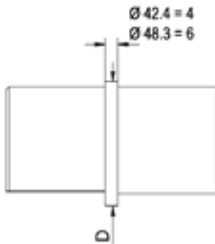


Model 2300	AISI 304 (inside)	AISI 316 (outside)
Diameter	Art. no.	Art. no.
42.4	12.2300.421.21	12.2300.421.31
48.3	12.2300.481.21	12.2300.481.31

Connector, straight



| Sales unit: 2 pieces

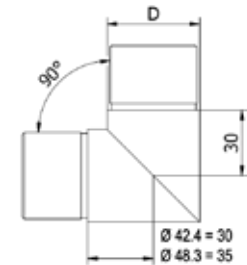


Model 2200	AISI 304 (inside)	AISI 316 (outside)
Diameter	Art. no.	Art. no.
42.4	12.2200.421.21	12.2200.421.31
48.3	12.2200.481.21	12.2200.481.31

Connector 90°



| Sales unit: 2 pieces

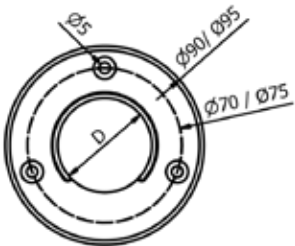


Model 2210	AISI 304 (inside)	AISI 316 (outside)
Diameter	Art. no.	Art. no.
42.4	12.2210.421.21	12.2210.421.31
48.3	12.2210.481.21	12.2210.481.31

Wall support



| Sales unit: 2 pieces



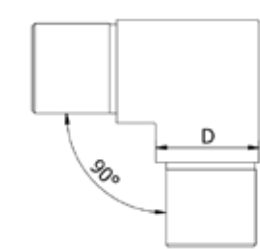
Model 2220	AISI 304 (inside)	AISI 316 (outside)
Diameter	Art. no.	Art. no.
42.4	12.2220.421.21	12.2220.421.31
48.3	12.2220.481.21	12.2220.481.31

HANDRAIL

Corner connector



| Sales unit: 2 pieces

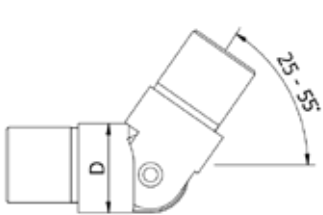


Model 2211	AISI 304 (inside)	AISI 316 (outside)
For diameter	Art. no.	Art. no.
42.4	12.2211.421.21	12.2211.421.31
48.3	12.2211.481.21	12.2211.481.31

Corner connector, upwards adjustable



| Upwards = 25° - 55°
| Sales unit: 2 pieces

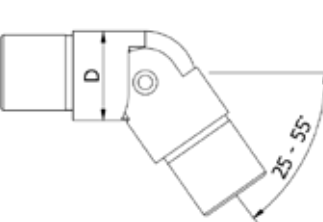


Model 2115	AISI 304 (inside)	AISI 316 (outside)
For diameter	Art. no.	Art. no.
42.4	12.2215.421.21	12.2215.421.31
48.3	12.2215.481.21	12.2215.481.31

Corner connector, downwards adjustable



| Downwards = 25° - 55°
| Sales unit: 2 pieces



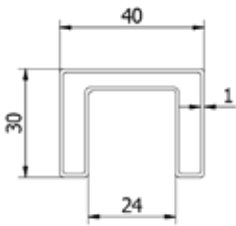
Model 2116	AISI 304 (inside)	AISI 316 (outside)
For diameter	Art. no.	Art. no.
42.4	12.2216.421.21	12.2216.421.31
48.3	12.2216.481.21	12.2216.481.31

HANDRAIL

Handrail



- | 40 x 30 x 1 mm
- | U handrail rubber seals, 24 mm
- | Sales unit: 1 piece



Model 2106	AISI 304 (inside)	AISI 316 (outside)
Length	Art. no.	Art. no.
5000	12.2105.401.21	12.2105.401.31

U handrail rubber seals, 24 mm



- | U handrail rubber seals for 24 mm



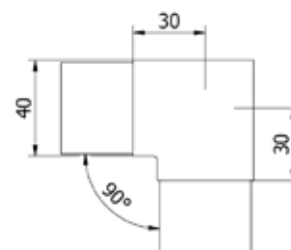
Model 6542		
Length	Glass thickness	Art. no.
6 mtr	8 - 11 mm	90.6542.008.60
25 mtr	8 - 11 mm	90.6542.208.60
6 mtr	11.5 - 13.5 mm	90.6542.011.60
25 mtr	11.5 - 13.5 mm	90.6542.211.60
6 mtr	15 mm	90.6542.015.60
25 mtr	15 mm	90.6542.215.60
6 mtr	16 - 17.5 mm	90.6542.016.60
25 mtr	16 - 17.5 mm	90.6542.216.60
6 mtr	19 mm	90.6542.019.60
25 mtr	19 mm	90.6542.219.60
6 mtr	20 - 21.5 mm	90.6542.020.60
25 mtr	20 - 21.5 mm	90.6542.220.60

HANDRAIL

Handrail corner connector 90°



| 40 x 30 x 1 mm
| Sales unit: 2 pieces

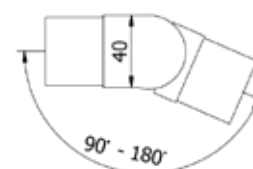


Model 2210	AISI 304 (inside)	AISI 316 (outside)
	Art. no.	Art. no.
	12.2210.401.21	12.2210.401.31

Corner connector, horizontally adjustable



| For handrail 40 x 30 x 1 mm
| Sales unit: 2 pieces

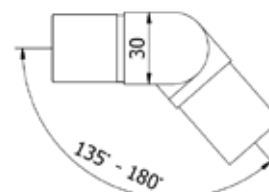


Model 2212	AISI 304 (inside)	AISI 316 (outside)
Direction	Art. no.	Art. no.
horizontal	90° - 180° 12.2212.401.21	12.2212.401.31

Corner connector, vertically adjustable



| For handrail 40 x 30 x 1 mm
| Sales unit: 2 pieces

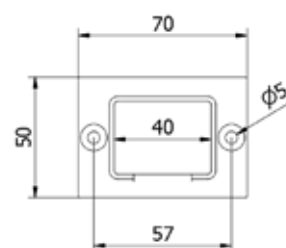


Model 2213	AISI 304 (inside)	AISI 316 (outside)
Direction	Art. no.	Art. no.
vertical	90° - 135° 12.2213.401.21	12.2213.401.31

Wall connector for handrail



| 40 x 30 x 1 mm
| Sales unit: 2 pieces



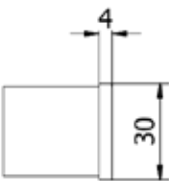
Model 2220	AISI 304 (inside)	AISI 316 (outside)
	Art. no.	Art. no.
	12.2220.401.21	12.2220.401.31

HANDRAIL

End cap for handrail



| 40 x 30 x 1 mm
| Sales unit: 2 pieces

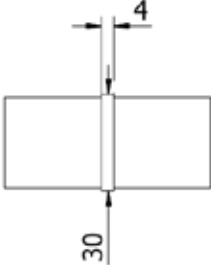


Model 2300	AISI 304 (inside)	AISI 316 (outside)
	Art. no.	Art. no.
	12.2300.401.21	12.2300.401.31

Handrail tube connector



| 40 x 30 x 1 mm
| Sales unit: 2 pieces



Model 2200	AISI 304 (inside)	AISI 316 (outside)
	Art. no.	Art. no.
	12.2200.401.21	12.2200.401.31

LED ILLUMINATED HANDRAIL

- 64** LAZOR**TRACK** LED GLASS HANDRAIL
- 70** LAZOR**TRACK** LED WALL HANDRAIL
- 72** ACCESSORIES FOR LAZOR**TRACK**
- 74** LAZOR**TRACK** STANDARD HANDRAIL
- 78** ACCESSORIES FOR LAZOR**TRACK** STANDARD HANDRAIL

LAZOR*TRACK*

LED handrail


LEDs get ready to rumble.

Inspired by the permanent onward development of LED illumination, many new light installation possibilities and applications keep appearing in architecture. Whether discreet, soft or lightfast – LEDs not only stand out due to their amazing unobtrusiveness but also consume less energy, generate less heat and in this way contribute to a sustainable energy footprint.



Essential Features

- | Modern design
- | Available for wall and glass mounting
- | Aluminium and wood
- | Available in RAL
- | Protection class: IP66
- | LED strip: Can be cut to size (every 55 mm)
- | Voltage: 24 V
- | LEDs per metre: 144
- | Beam angle: 80°
- | Dimmable: yes
- | Colour temperature: 4000 K
- | Light colour: Neutral white
- | Rated output per metre: 6 W
- | Luminous flux per metre: 180 lm



1 integrated
transformer every 10 metres

One control
for all
illumination

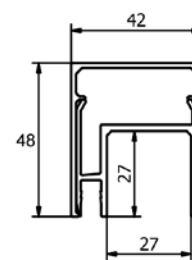
The LED strip can
simply be cut to size.

LAZORTRACK SET | GLASS HANDRAIL

Lazortrack glass handrail, aluminium complete set



- | Width: 42 mm
- | Height: 48 mm
- | Incl. end caps, transformer, LED strip and cable
- | Pre-assembled for connection wiring on site
- | Suitable for interior and exterior use
- | Sales unit: 1 piece



Lazortrack length 2.5 m

	Mill finish	Plain aluminium	RAL
Glass thickness	Art. no.	Art. no.	Art. no.
8 - 11 mm	18.2002.421.10	18.2002.421.11	18.2002.421.13/16/18/19
12 - 13.5 mm	18.2002.422.10	18.2002.422.11	18.2002.422.13/16/18/19
16 - 17.5 mm	18.2002.423.10	18.2002.423.11	18.2002.423.13/16/18/19
20 - 21.5 mm	18.2002.424.10	18.2002.424.11	18.2002.424.13/16/18/19

Lazortrack length 5 m

	Mill finish	Plain aluminium	RAL
Glass thickness	Art. no.	Art. no.	Art. no.
8 - 11 mm	18.2005.421.10	18.2005.421.11	18.2005.421.13/16/18/19
12 - 13.5 mm	18.2005.422.10	18.2005.422.11	18.2005.422.13/16/18/19
16 - 17.5 mm	18.2005.423.10	18.2005.423.11	18.2005.423.13/16/18/19
20 - 21.5 mm	18.2005.424.10	18.2005.424.11	18.2005.424.13/16/18/19

Lazortrack length 10 m

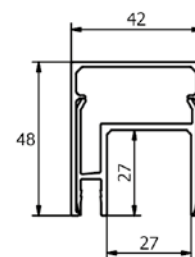
	Mill finish	Plain aluminium	RAL
Glass thickness	Art. no.	Art. no.	Art. no.
8 - 11 mm	18.2010.421.10	18.2010.421.11	18.2010.421.13/16/18/19
12 - 13.5 mm	18.2010.422.10	18.2010.422.11	18.2010.422.13/16/18/19
16 - 17.5 mm	18.2010.423.10	18.2010.423.11	18.2010.423.13/16/18/19
20 - 21.5 mm	18.2010.424.10	18.2010.424.11	18.2010.424.13/16/18/19

LAZORTRACK | GLASS HANDRAIL, ALUMINIUM

Lazortrack handrail



- | Width: 42 mm
- | Height: 48 mm
- | Sales unit: 1 piece

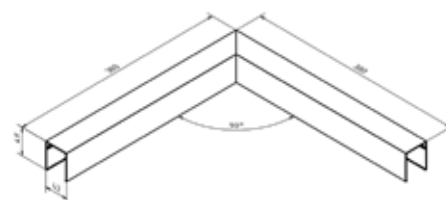


	Mill finish	Plain aluminium	RAL
length	Art. no.	Art. no.	Art. no.
2500	18.2102.420.10	18.2102.420.11	18.2102.420.13/16/18/19
5000	18.2105.420.10	18.2105.420.11	18.2105.420.13/16/18/19

Lazortrack handrail, inside corner, 90°



- | LED strip inside
- | Side length outside 380 mm
- | 48 x 42 mm
- | Sales unit: 1 piece

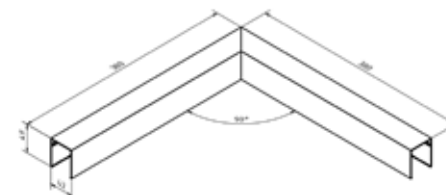


Model 2210	Mill finish	Plain aluminium	RAL
	Art. no.	Art. no.	Art. no.
	18.2210.420.10	18.2210.420.11	18.2210.420.13/16/18/19

Lazortrack handrail, outside corner, 90°



- | LED strip outside
- | Side length outside 380 mm
- | 48 x 42 mm
- | Sales unit: 1 piece

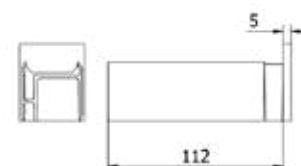


Model 2214	Mill finish	Plain aluminium	RAL
	Art. no.	Art. no.	Art. no.
	18.2214.420.10	18.2214.420.11	18.2214.420.13/16/18/19

Lazortrack end cap, left



- | 48 x 42 mm
- | Sales unit: 1 piece



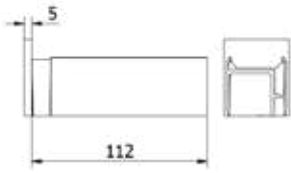
Model 2300	Mill finish	Plain aluminium	RAL
	Art. no.	Art. no.	Art. no.
	18.2300.420.10	18.2300.420.11	18.2300.420.13/16/18/19

LAZORTRACK | GLASS HANDRAIL, ALUMINIUM

Lazortrack end cap, right



| 48 x 42 mm
| Sales unit: 1 piece

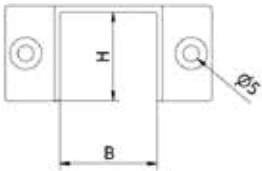


Model 2305	Mill finish	Plain aluminium	RAL
	Art. no.	Art. no.	Art. no.
	18.2305.420.10	18.2305.420.11	18.2305.420.13/16/18/19

Lazortrack wall connector



| 48 x 42 mm
| Sales unit: 2 pieces

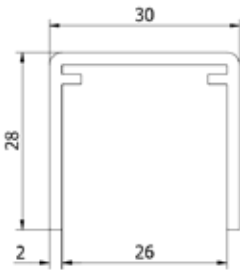


Model 2220	Mill finish	Plain aluminium	RAL
	Art. no.	Art. no.	Art. no.
	18.2220.420.10	18.2220.420.11	18.2220.420.13/16/18/19

Handrail U profile, 30 mm, can be use as a cable protector and hide wires



| Length: 4000 mm
| 30 x 28 x 2 mm
| U 26 mm
| For glass thicknesses up to 21.5 mm
| Sales unit: 1 piece

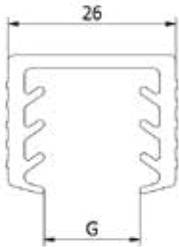


Model 2114	Mill finish	Plain aluminium	RAL coloured
Length	Art. no.	Art. no.	Art. no.
4000	11.2115.302.10	11.2115.302.11	11.2115.302.13/16/18/19

U handrail rubber seals, 26 mm



| U handrail rubber seals for 26 mm



Model 6530					
Length	Glass thickness	Art. no.	Length	Glass thickness	Art. no.
4000	8 - 11 mm	90.6530.008.60	4000	16 - 17,5 mm	90.6530.016.60
25000	8 - 11 mm	90.6530.208.60	25000	16 - 17,5 mm	90.6530.216.60
4000	11,5 - 13,5 mm	90.6530.011.60	4000	19 mm	90.6530.019.60
25000	11,5 - 13,5 mm	90.6530.211.60	25000	19 mm	90.6530.219.60
4000	15 mm	90.6530.015.60	4000	20 - 21,5 mm	90.6530.020.60
25000	15 mm	90.6530.215.60	25000	20 - 21,5 mm	90.6530.220.60

U handrail rubber seals, 27 mm

| U handrail rubber seals for 27 mm



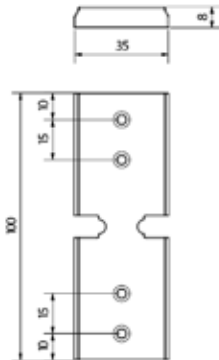
Model 6548		
Length	Glass thickness	Art. no.
6 mtr	8 - 11 mm	90.6548.008.60
25 mtr	8 - 11 mm	90.6548.208.60
6 mtr	11.5 - 13.5 mm	90.6548.011.60
25 mtr	11.5 - 13.5 mm	90.6548.211.60
6 mtr	15 mm	90.6548.015.60
25 mtr	15 mm	90.6548.215.60
6 mtr	16 - 17.5 mm	90.6548.016.60
25 mtr	16 - 17.5 mm	90.6548.216.60
6 mtr	19 mm	90.6548.019.60
25 mtr	19 mm	90.6548.219.60
6 mtr	20 - 21.5 mm	90.6548.020.60
25 mtr	20 - 21.5 mm	90.6548.220.60

Lazortrack Connector Glass Handrail

| Sales unit: 1 piece



Model 4200	
Art. no.	
18.2200.420.15	



LAZORTRACK | WALL HANDRAIL

Lazortrack wall handrail, aluminium complete set



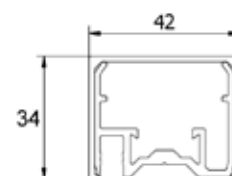
- | Width: 42 mm
- | Height: 48 mm
- | Incl. handrail support, end caps, transformer, LED strip and cable
- | Pre-assembled for connection wiring on site
- | Suitable for interior and exterior use
- | Sales unit: 1 piece

	Mill finish	Plain aluminium	RAL
length	Art. no.	Art. no.	Art. no.
2500	18.4002.420.10	18.4002.420.11	18.4002.420.13/16/18/19
5000	18.4005.420.10	18.4005.420.11	18.4005.420.13/16/18/19
10000	18.4010.420.10	18.4010.420.11	18.40010.420.13/16/18/19

Lazortrack handrail



- | Width: 42 mm
- | Height: 34 mm
- | Sales unit: 1 piece

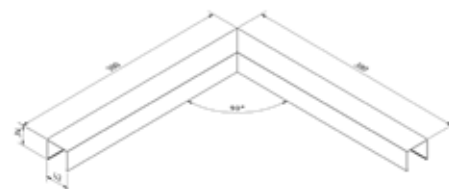


	Mill finish	Plain aluminium	RAL
length	Art. no.	Art. no.	Art. no.
2500	18.4102.420.10	18.4102.420.11	18.4102.420.13/16/18/19
5000	18.4105.420.10	18.4105.420.11	18.4105.420.13/16/18/19

Lazortrack handrail, inside corner, 90°



- | LED strip inside
- | Side length outside 380 mm
- | 42 x 34 mm
- | Sales unit: 1 piece

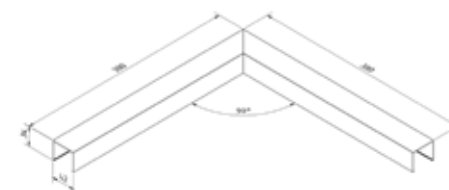


Model 4210	Mill finish	Plain aluminium	RAL
	Art. no.	Art. no.	Art. no.
	18.4210.420.10	18.4210.420.11	18.4210.420.13/16/18/19

Lazortrack handrail, outside corner, 90°



- | LED strip outside
- | Side length outside 380 mm
- | 42 x 34 mm
- | Sales unit: 1 piece

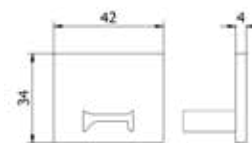


Model 4214	Mill finish	Plain aluminium	RAL
	Art. no.	Art. no.	Art. no.
	18.4214.420.10	18.4214.420.11	18.4214.420.13/16/18/19

LAZORTRACK | WALL HANDRAIL, ACCESSORIES

Lazortrack end cap, left/right

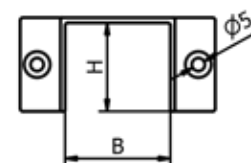
| 42 x 34 mm
| Sales unit: 1 piece



Model 4300	Mill finish	Plain aluminium	RAL
	Art. no.	Art. no.	Art. no.
	18.4300.420.10	18.4300.420.11	18.4300.420.13/16/18/19

Lazortrack wall connector for wall handrail

| Sales unit: 2 pieces



Model 2220	Mill finish	Plain aluminium	RAL
Width x Height	Art. no.	Art. no.	Art. no.
42 x 34	18.4220.420.10	18.4220.420.11	18.4220.420.13/16/18/19
50 x 38	18.4220.500.10	18.4220.500.11	18.4220.500.13/16/18/19

Wall handrail support

A cable with a maximum diameter of 8 mm fits through the handrail support.

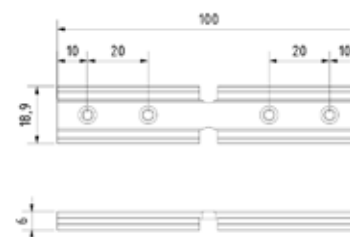
| 2 handrail holders at 2.5 meters
| 4 handrail holders at 5.0 meters
| Sales unit: 2 pieces



Model 4400	AISI 304 (inside)	AISI 316 (outside)
	Art. no.	Art. no.
	18.4400.000.21	18.4400.000.31

Lazortrack Connector Wall Handrail

| Sales unit: 1 piece



Model 4200	
	Art. no.
	18.4200.420.15

Lazortrack Transformer



| 24 V
| Sales unit: 1 piece

Model 3000		
Watts	up to a length of	Art. no.
100 W	10 m	18.3000.100.00

Lazortrack LED strip, warm white



| 24 V
| 6 W/m
| Sales unit: 1 piece

Model 3106	
length	Art. no.
2.5 m	18.3106.002.00
5 m	18.3106.005.00
10 m	18.3106.010.00

Lazortrack cable



| 230 V
| Sales unit: 1 piece

Model 9001	
length	Art. no.
10 m	18.9001.010.00
20 m	18.9001.020.00

Lazortrack Y cable

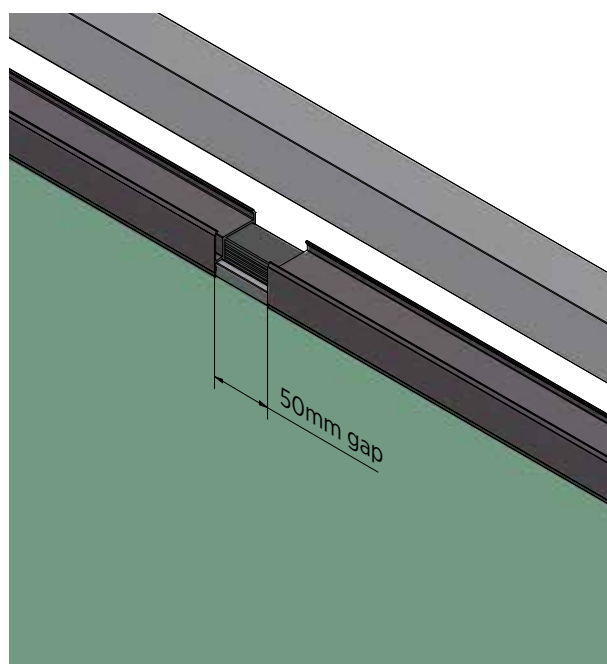
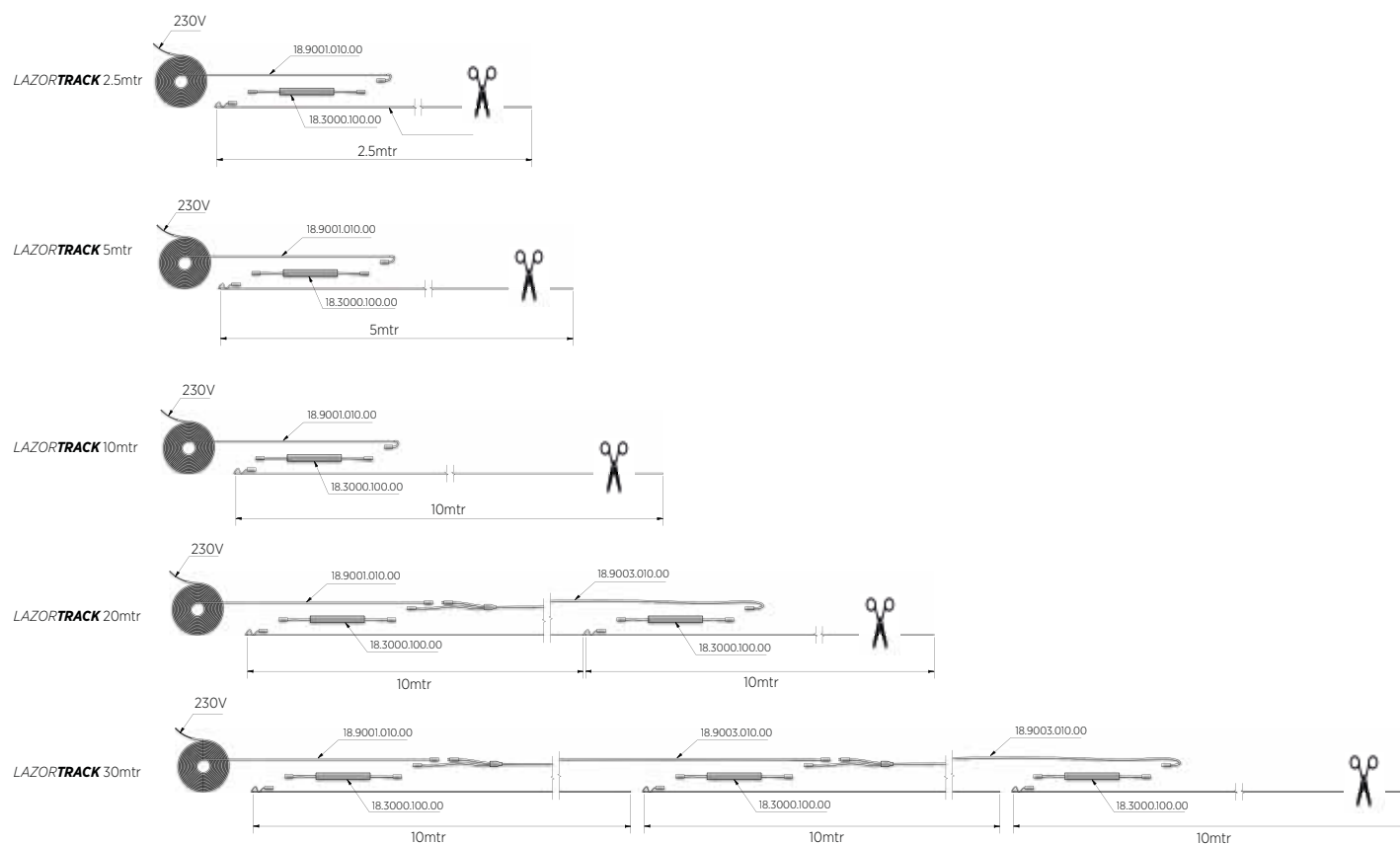
Do you need LED illumination on more than 10 m?
No problem at all! With this Y cable, you can extend your Lazortrack by up to 50 m. Simply connect the next mains adaptor together with the LED to the power supply and your illumination is there.



| Sales unit: 1 piece

Model 9003	
	Art. no.
	18.9003.010.00

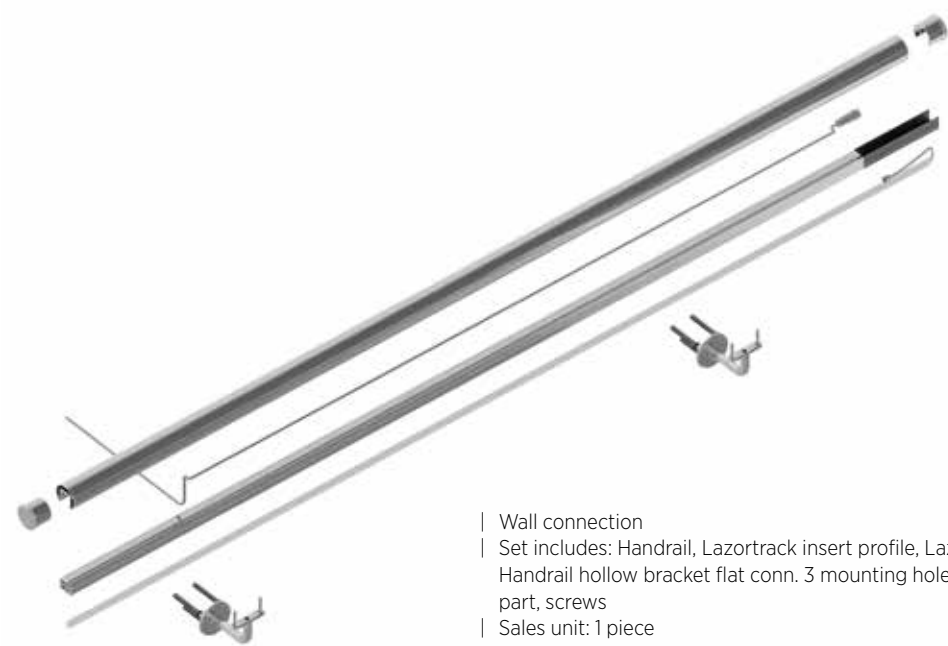
How to extend the Lazortrack LED strip:



A gap of 50mm is needed to avoid LED and Handrail damage due to elongation and contraction from heat related matters.

LAZORTRACK | STANDARD HANDRAIL SETS WITH LED

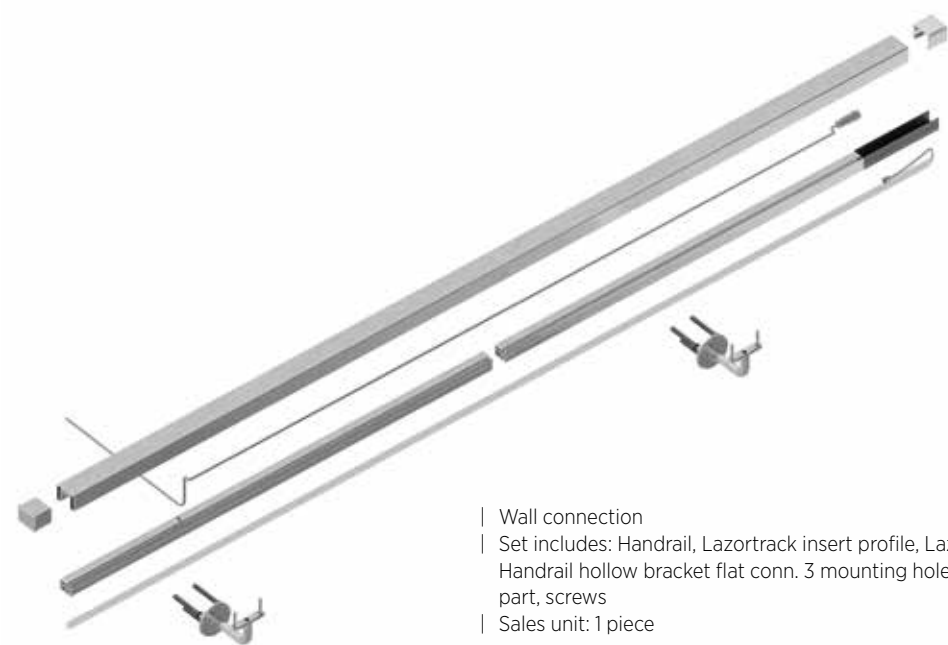
Lazortrack in Handrail Set Ø42.4 mm



- | Wall connection
- | Set includes: Handrail, Lazortrack insert profile, Lazortrack 24V electr. cable, Lazortrack LED, Handrail hollow bracket flat conn. 3 mounting holes, Endcap flat glass, Lazortrack Handrail end part, screws
- | Sales unit: 1 piece

	AISI 304 (inside)	AISI 316 (outside)
length	Art. no.	Art. no.
5 mtr	18.2005.421.21	18.2005.421.31
10 mtr	18.2010.421.21	18.2010.421.31

Lazortrack in Handrail Set 40 x 30 mm



- | Wall connection
- | Set includes: Handrail, Lazortrack insert profile, Lazortrack 24V electr. cable, Lazortrack LED, Handrail hollow bracket flat conn. 3 mounting holes, Endcap flat glass, Lazortrack Handrail end part, screws
- | Sales unit: 1 piece

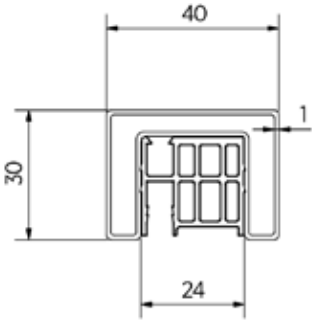
	AISI 304 (inside)	AISI 316 (outside)
length	Art. no.	Art. no.
5 mtr	18.2005.401.21	18.2005.401.31
10 mtr	18.2010.401.21	18.2010.4201.31

LAZORTRACK | STANDARD HANDRAILS WITH LED

Lazortrack standard handrail



- | 40 x 30 x 1 mm
- | Length: 5000 mm
- | Sales unit: 1 piece
- | find the corresponding LED on page 78

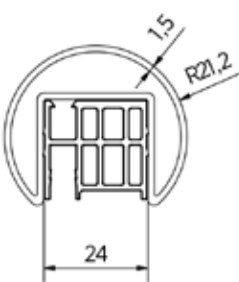


Model 2105	AISI 304 (inside)	AISI 316 (outside)
	Art. no.	Art. no.
	18.2105.401.21	18.2105.401.31

Lazortrack standard handrail round Ø 42,4 mm



- | Length 5000 mm
- | Diameter Ø 42,4 x 1,5 mm
- | Sales unit: 1 piece
- | find the corresponding LED on page 78



Model 2105	AISI 304 (inside)	AISI 316 (outside)
	Art. no.	Art. no.
	18.2105.421.21	18.2105.421.31

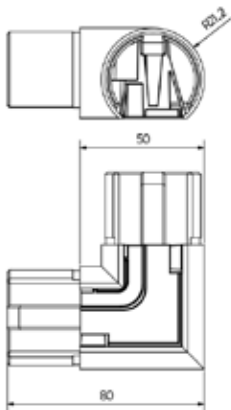
LAZORTRACK | STANDARD HANDRAILS WITH LED

Lazortrack inside corner Ø 42,4 mm

| Diameter Ø 42,4 mm
| Sales unit: 1 piece



Model 2210	AISI 304 (inside)	AISI 316 (outside)
Diameter	Art. no.	Art. no.
42,4 mm	18.2210.421.21	18.2210.421.31

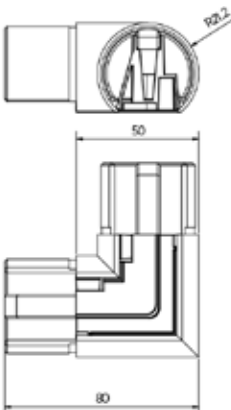


Lazortrack outside corner Ø 42,4 mm

| Diameter Ø 42,4 mm
| Sales unit: 1 piece



Model 2210	AISI 304 (inside)	AISI 316 (outside)
Diameter	Art. no.	Art. no.
42,4 mm	18.2210.422.21	18.2210.422.31

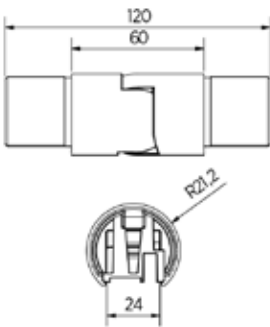


Lazortrack connector adjustable down

| Diameter Ø 42,4 mm
| Sales unit: 1 piece



Model 2216	AISI 304 (inside)	AISI 316 (outside)
Diameter	Art. no.	Art. no.
42,4 mm	18.2216.421.21	18.2216.421.31

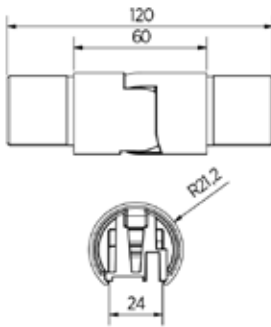


Lazortrack connector adjustable up

| Diameter Ø 42,4 mm
| Sales unit: 1 piece



Model 2215	AISI 304 (inside)	AISI 316 (outside)
Diameter	Art. no.	Art. no.
42,4 mm	18.2215.421.21	18.2215.421.31



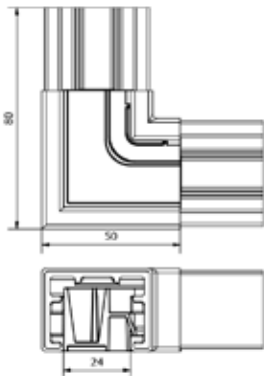
LAZORTRACK | STANDARD HANDRAILS WITH LED

Lazortrack inside corner

| Dimensions: 40x30 mm
| Sales unit: 1 piece



Model 2210	AISI 304 (inside)	AISI 316 (outside)
	Art. no.	Art. no.
	18.2210.401.21	18.2210.401.31

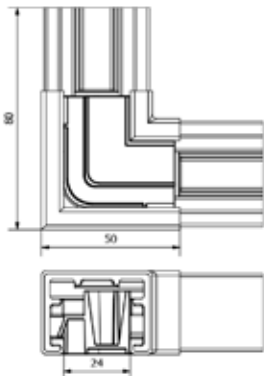


Lazortack outside corner

| Dimensions: 40x30 mm
| Sales unit: 1 piece



Model 2210	AISI 304 (inside)	AISI 316 (outside)
	Art. no.	Art. no.
	18.2210.402.21	18.2210.402.31

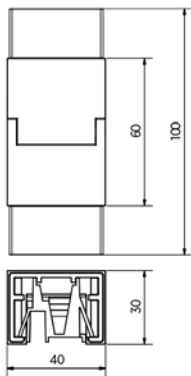


Lazortrack corner connector vertical 180 - 135°

| Sales unit: 1 piece



Model 2213	AISI 304 (inside)	AISI 316 (outside)
	Art. no.	Art. no.
	18.2213.401.21	18.2213.401.31



LAZORTRACK | STANDARD HANDRAILS WITH LED ACCESORIES

Lazortrack Drilling Tool for wooden handrails

| Sales unit: 1 piece



Model 0100	
Art. no.	
	90.0100.210.00

Lazortrack Drilling tool kit

| Sales unit: 1 piece



Model 0100	
Art. no.	
	90.0100.220.00

Wall handrail support

A cable with a maximum diameter of 8 mm fits through the handrail support.

- | 2 handrail holders at 2.5 meters
- | 4 handrail holders at 5.0 meters
- | Sales unit: 2 pieces



Model 4400	AISI 304 (inside)	AISI 316 (outside)
Art. no.		Art. no.
	18.4400.000.21	18.4400.000.31



Lazortrack cable

- | 24 V
- | Sales unit: 1 piece



Model 9001	
length	Art. no.
6 m	18.9017.006.00
11 m	18.9017.011.00



GLASS PARTITIONS

82 KAZIWALL

KAZIWALL

Room height fall protection for indoor and outdoor use

KAZIWALL

He is the Knight of Unobtrusiveness. He does not cross limits because he is so steadfast. But he can separate entire worlds, therefore you may want to view him from more than one angle. Next to him, the furniture are taking their positions, the plants bending subserviently in from of him, the wind fluffs up and the balcony is committed to coziness.

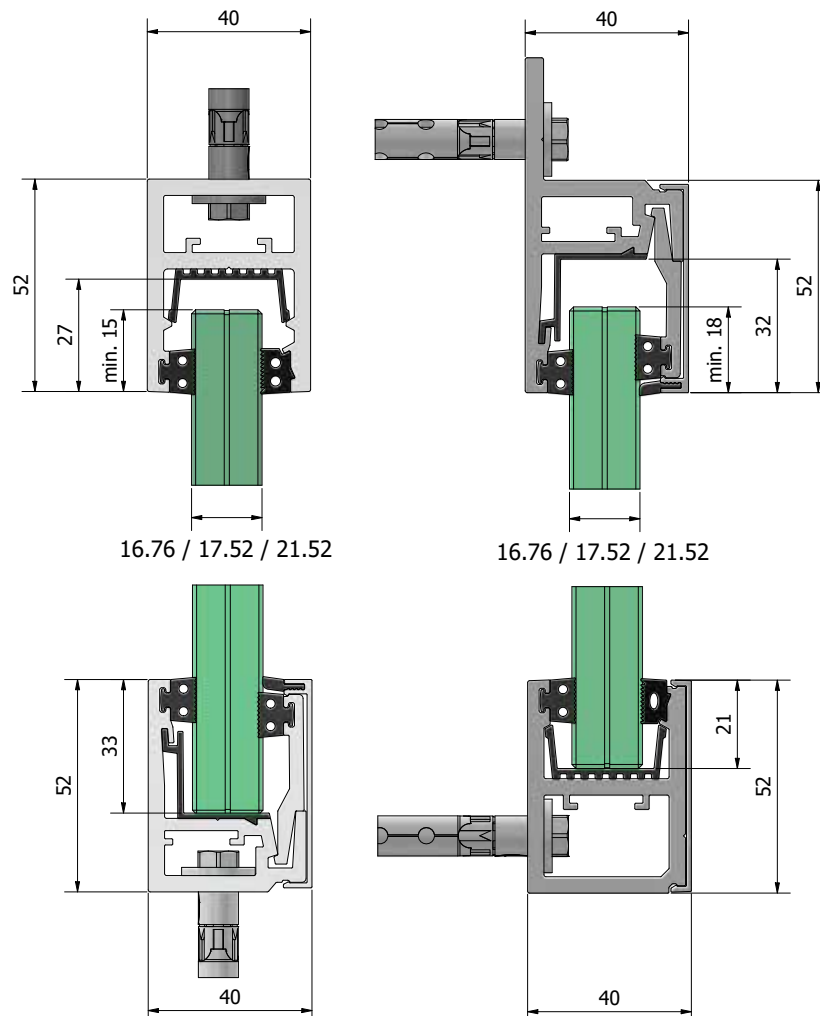
He is the Master of the Great Bang but also protects from noise.


Rather a bang than a whimper with **KAZIWALL!**

KAZIWALL is the one and only room divider. It is suitable for indoor and outdoor use and available with fall protection. It serves as a room divider across several floors or as a windscreen on balconies or terraces.

Essential Features

- | Easy and safe installation for single glass fixation method
- | Max ceiling height 3.0 m
- | In case of fall protection, max. load 1.0 kN/m
- | Top mount for both ceiling and floor
- | For glass thickness 16.76 mm, 17.52 mm and 21.52 mm
- | Standard glass width ≥ 1000 mm.
Customized glass width also possible.
- | Prefabricated System





Plug and Play System

Fall protection system

Easy to mount. Prefabricated System.

KAZIWALL | TOP

KAZIWALL Top



- | Prefabricated System
- | 1-piece top mount profile
- | Sales unit: 1 piece

		Mill finish	Plain aluminium	RAL coloured
Length	Glass thickness	Art. no.	Art. no.	Art. no.
2500 mm	10,76 mm / 12,76 mm	20.4002.011.10	20.4002.011.11	20.4002.011.13/16/18/19
5000 mm	10,76 mm / 12,76 mm	20.4005.011.10	20.4005.011.11	20.4005.011.13/16/18/19
2500 mm	16,76 mm / 17,52 mm	20.4002.017.10	20.4002.017.11	20.4002.017.13/16/18/19
5000 mm	16,76 mm / 17,52 mm	20.4005.017.10	20.4005.017.11	20.4005.017.13/16/18/19
2500 mm	21,52 mm	20.4002.022.10	20.4002.022.11	20.4002.022.13/16/18/19
5000 mm	21,52 mm	20.4005.022.10	20.4005.022.11	20.4005.022.13/16/18/19

KAZIWALL Top 2 Pieces



- | Prefabricated System
- | 2-piece top mount profile
- | Sales unit: 1 piece

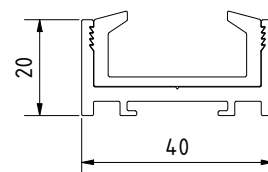
Note: Intermediate profiles in L=900mm to secure each glass panel separately

		Mill finish	Plain aluminium	RAL coloured
Length	Glass thickness	Art. no.	Art. no.	Art. no.
2500 mm	10,76 mm / 12,76 mm	20.4502.011.10	20.4502.011.11	20.4502.011.13/16/18/19
5000 mm	10,76 mm / 12,76 mm	20.4505.011.10	20.4505.011.11	20.4505.011.13/16/18/19
2500 mm	16,76 mm / 17,52 mm	20.4502.017.10	20.4502.017.11	20.4502.017.13/16/18/19
5000 mm	16,76 mm / 17,52 mm	20.4505.017.10	20.4505.017.11	20.4505.017.13/16/18/19
2500 mm	21,52 mm	20.4502.022.10	20.4502.022.11	20.4502.022.13/16/18/19
5000 mm	21,52 mm	20.4505.022.10	20.4505.022.11	20.4505.022.13/16/18/19

KAZIWALL Wall profile



- | Prefabricated System
- | Length: 3000 mm
- | Sales unit: 1 piece



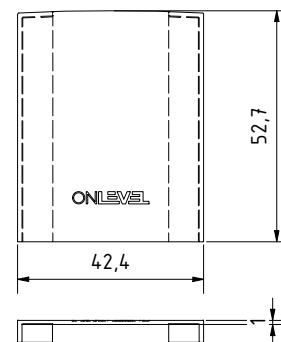
	Mill finish	Plain aluminium	RAL coloured
Glass thickness	Art. no.	Art. no.	Art. no.
10,76 mm / 12,76 mm	20.5003.011.10	20.5003.011.11	20.5003.011.13/16/18/19
16,76 mm / 17,52 mm	20.5003.017.10	20.5003.017.11	20.5003.017.13/16/18/19
21,52 mm	20.5003.022.10	20.5003.022.11	20.5003.022.13/16/18/19

KAZIWALL Endcap



- | Sales unit: 8 pieces

Colour	Art. no.
mill finish	20.9010.000.10
natural anodized	20.9010.000.11
RAL shiny	20.9010.000.13
RAL struct.	20.9010.000.16
RAL matt	20.9010.000.18
ARMOR RAL	20.9010.000.19





KAZIWALL SIDE



| Prefabricated System
| Sales unit: 1 piece

		Mill finish	Plain aluminium	RAL coloured
Length	Glass thickness	Art. no.	Art. no.	Art. no.
2500 mm	10,76 mm / 12,76 mm	20.4102.011.10	20.4102.011.11	20.4102.011.13/16/18/19
5000 mm	10,76 mm / 12,76 mm	20.4105.011.10	20.4105.011.11	20.4105.011.13/16/18/19
2500 mm	16,76 mm / 17,52 mm	20.4102.017.10	20.4102.017.11	20.4102.017.13/16/18/19
5000 mm	16,76 mm / 17,52 mm	20.4105.017.10	20.4105.017.11	20.4105.017.13/16/18/19
2500 mm	21,52 mm	20.4102.022.10	20.4102.022.11	20.4102.022.13/16/18/19
5000 mm	21,52 mm	20.4105.022.10	20.4105.022.11	20.4105.022.13/16/18/19

KAZIWALL SIDE 2 Pieces




| Prefabricated System
| Sales unit: 1 piece

Note: Intermediate profiles in L=900mm
to secure each glass panel separately

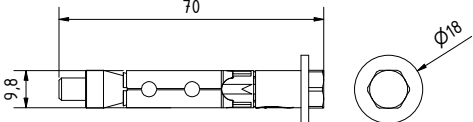
		Mill finish	Plain aluminium	RAL coloured
Length	Glass thickness	Art. no.	Art. no.	Art. no.
2500 mm	10,76 mm / 12,76 mm	20.4602.011.10	20.4602.011.11	20.4602.011.13/16/18/19
5000 mm	10,76 mm / 12,76 mm	20.4605.011.10	20.4605.011.11	20.4605.011.13/16/18/19
2500 mm	16,76 mm / 17,52 mm	20.4602.017.10	20.4602.017.11	20.4602.017.13/16/18/19
5000 mm	16,76 mm / 17,52 mm	20.4605.017.10	20.4605.017.11	20.4605.017.13/16/18/19
2500 mm	21,52 mm	20.4602.022.10	20.4602.022.11	20.4602.022.13/16/18/19
5000 mm	21,52 mm	20.4605.022.10	20.4605.022.11	20.4605.022.13/16/18/19



Fixation anchor Fischer FH II 10/10 S AISI 316




| For outside use
| Sales unit: 50 pieces
| required anchors:
2.5m: 13, 5m: 25

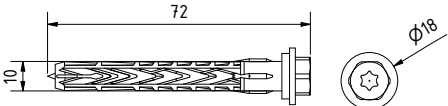


Art. no.
91.3521.010.30

Fixation anchor Fischer SXRL 10x60 FUS steel zinc plated




| For inside use
| Sales unit: 50 pieces
| required anchors:
2.5m: 13, 5m: 25



Art. no.
91.3581.060.81

DUOPOWER 8 mm x 65 mm



| For wall mount of side wall profile
| Suitable screws: Countersunk screw 5 mm x 70 mm, A2
| Sales unit: 50 pieces

Duopower	Art. no.
Duopower 8 x 65 S A2	91.3560.865.20

Tape 69



- | Particularly suitable for applications where a transparent, flexible bond is required.
- | For inside use
- | Length: 12 m, Thickness: 3 mm
- | Sales unit: 1 piece



Model 7025		
Width	Glass thickness	Art. no.
5 mm	8 - 8.76 mm	90.7025.008.03
7 mm	10 - 10.76 mm	90.7025.010.03
9 mm	12 - 12.76 mm	90.7025.012.03
13 mm	16.76 - 17.52 mm	90.7025.016.03
17 mm	20.76 - 21.52 mm	90.7025.020.03

Tape 69 mounting tool



- | Sales unit: 1 piece

Model 0100	
For glass thicknesses	Art. no.
8/8.76 and 10/10.76 mm	90.0100.170.08
12/12.76 and 16.76/17.52 mm	90.0100.170.12
16.76/17.52 and 20.76/21.52 mm	90.0100.170.16

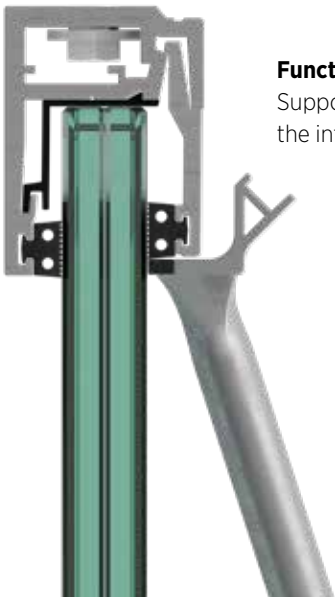
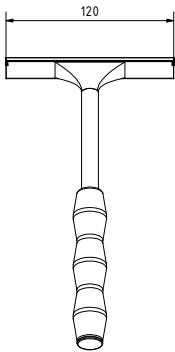
KAZIWALL Tool

| Sales unit: 1 piece

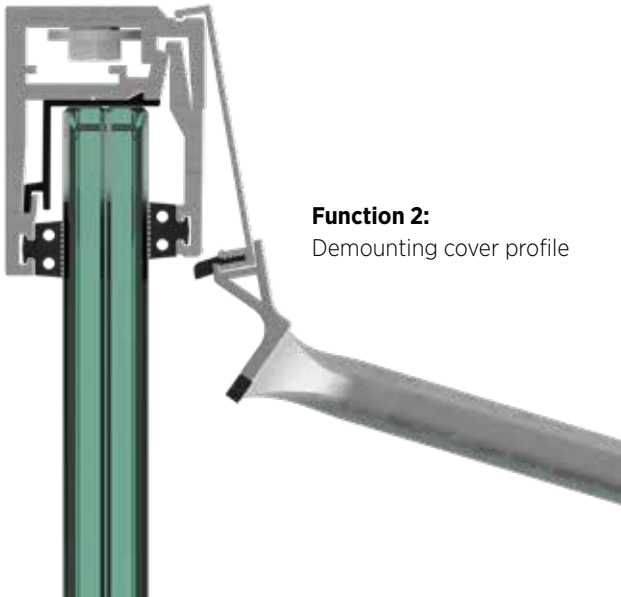


Art. no.

90.0100.190.00



Function 1:
Support tool to hammer-in
the intermediate profile



Function 2:
Demounting cover profile

Usage data as per load capacity

Indoor (inside wall)

	Line load	Glass thickness	Height (max)
Private	0.5 kN/m	16.76 mm / 17.52 mm	3000 mm
Public	1.0 kN/m	21.52 mm	3000 mm

Outdoor (as part of exterior wall)

	Line load	Glass thickness	Height (max)	qp(z) max.
Private/Public	1.0 kN/m	21.52mm	2600 mm	1.41 kN/m2
Private/Public	1.0 kN/m	21.52 mm	3000 mm	0.93 kN/m2

*All glass calculations are done for laminated toughened glass (ESG)



ACCESSORIES

94 ACCESSORIES

95 POWER SUCKER

96 FIXING ANCHOR

108 SAMPLE

ACCESSORIES

Stainless steel adhesive



Suitable for plug connections (e.g. handrail – handrail support) which are adjusted to each other in diameter.

- | Colour: green
- | Sales unit: 1 piece

Model 7005	
Contents	Art. no.
50 ml	90.7005.000.11

Wood adhesive



Suitable for wooden plug connections

- | Colour: beige
- | Sales unit: 1 piece

Model 7018	
Content	Art. no.
20 ml	90.7018.000.00

Stainless steel cleaning set



- | Contents 500 ml
- | Sales unit: 1 piece

Model 7007	
Colour	Art. no.
transparent	90.7007.000.00

POWERSUCKER | SUCTION LIFTER

Power Sucker, black



- | Carrying capacity of 100 kg
- | Plastic handle
- | Lifting direction: parallel
- | 1.9 kg net weight
- | Ø 203 mm suction pad
- | Carrying case included in delivery

Power Sucker		
Diameter	Carrying capacity	Art. no.
Ø 203 mm	57 kg	90.0100.180.08

Power Sucker, metallic



- | Carrying capacity of 100 kg
- | Metal handle
- | Lifting direction: parallel
- | 1.9 kg net weight
- | Ø 203 mm suction pad
- | Carrying case included in delivery

Power Sucker		
Diameter	Carrying capacity	Art. no.
Ø 203 mm	57 kg	90.0100.180.10

Power Sucker, double



- | Carrying capacity of 50 kg
- | Two suction pads
- | Levers for generating the appropriate vacuum
- | 1.9 kg net weight
- | Ø 118 mm per suction pad

Power Sucker		
Diameter	Carrying capacity	Art. no.
Ø 118 mm	50 kg	90.0100.180.12



Anchor rod M10x190

- Essential Features:**

 - | Finish interior application: zinc-plated steel (interior)
 - | Finish exterior application: V4A (outside)
 - | M10
 - | Sales unit: 10 pieces
- | Suitable mortar for **Model 36xx**: 91.3600.010.00
 - | Suitable mortar for **Model 35xx**: 91.3000.010.00
 - | Injection mortar, sufficient for:
Modell 36xx ± 18 anchors
Modell 35xx ± 26 anchors

Anchor Rod VMU-A 10x190			Fixing Anchor RG M10x190		
ONLEVEL			fischer		
Model 3641	zinc-plated steel (interior)	V4A (outside)	Model 3541	zinc-plated steel (interior)	V4A (outside)
Art. no.	91.3641.019.81	91.3641.019.30	Art. no.	91.3541.019.81	91.3541.019.30



HIDDEN LEVEL | FIXING ANCHOR



Anchor rod M10x150

- Essential Features:**

 - | Finish interior application: zinc-plated steel (interior)
 - | Finish exterior application: V4A (outside)
 - | Sales unit: 10 pieces
- | Suitable mortar for **Model 36xx**: 91.3600.010.00
 - | Suitable mortar for **Model 35xx**: 91.3000.010.00
 - | Injection mortar, sufficient for:
Modell 36xx ± 21 anchors
Modell 35xx ± 30 anchors

Anchor Rod VMU-A 10-50/150

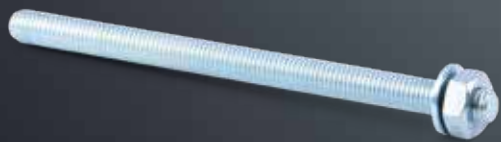
ONLEVEL

Fixing Anchor FIS A M10x150

fischer

Model 3651	zinc-plated steel (interior)	V4A (outside)
Art. no.	91.3651.015.81	91.3651.015.30

Model 3551	zinc-plated steel (interior)	V4A (outside)
Art. no.	91.3551.015.81	91.3551.015.30





Anchor rod M12

- Essential Features:**

 - | Finish interior application: zinc-plated steel (interior)
 - | Finish exterior application: V4A (outside)
 - | M12
 - | Sales unit: 10 pieces
- | Suitable mortar for **Model 36xx**: 91.3600.010.00
 - | Suitable mortar for **Model 35xx**: 91.3000.010.00
 - | Injection mortar, sufficient for:
Modell 36xx ± 21 anchors
Modell 35xx ± 23 anchors

Anchor Rod VMU-A 12x135

ONLEVEL

Fixing Anchor RG M12x180

fischer

Model 3641	zinc-plated steel (interior)	V4A (outside)
Art. no.	91.3641.218.81	91.3641.218.30

Model 3541	zinc-plated steel (interior)	V4A (outside)
Art. no.	91.3541.218.81	91.3541.218.30





Fixing Anchor 12/50

- Essential Features:**
- | Finish interior application: zinc-plated steel (interior)
 - | Finish exterior application: V4A (outside)
 - | Sales unit: 25 pieces

Fixing Anchor SZ-SK 12/50

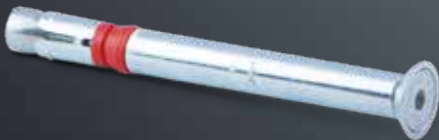


Model 3611	zinc-plated steel (interior)	V4A (outside)
Art. no.	91.3611.250.81	91.3611.250.30

Fixing Anchor FH II 12/50 SK



Model 3511	zinc-plated steel (interior)	V4A (outside)
Art. no.	91.3511.250.81	91.3511.250.30





Fixing anchor, countersunk head 12/10 & 12/15

- Essential Features:**
- | Finish interior application: zinc-plated steel (interior)
 - | Finish exterior application: V4A (outside)
 - | Sales unit: 25 pieces

Fixing Anchor SZ-SK 12-10

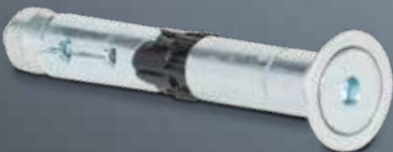


Model 3611	zinc-plated steel (interior)	V4A (outside)
Art. no.	91.3611.215.81	91.3611.215.30

Fixing Anchor FH II 12/15 SK



Model 3511	zinc-plated steel (interior)	V4A (outside)
Art. no.	91.3511.215.81	91.3511.215.30





Fixing Anchor 12/10

- Essential Features:
- | Finish interior application: zinc-plated steel (interior)
 - | Finish exterior application: V4A (outside)
 - | Sales unit: 50 pieces

Fixing Anchor SZ-S 12-10



Model 3621	zinc-plated steel (interior)	V4A (outside)
Art. no.	91.3621.210.81	91.3621.210.30

Fixing Anchor FH II 12/10



Model 3521	zinc-plated steel (interior)	V4A (outside)
Art. no.	91.3521.210.81	91.3521.210.30



HIDDEN LEVEL | FIXING ANCHOR



Bolt anchor M12/20

- Essential Features:**
- | Finish interior application: zinc-plated steel (interior)
 - | Finish exterior application: V4A (outside)
 - | M12
 - | Sales unit: 20 pieces

Fixing Anchor BZ 12-20-40/115

ONLEVEL

Model 3601	zinc-plated steel (interior)	V4A (outside)
Art. no.	91.3601.220.81	91.3601.220.30

Fixing Anchor, concrete FAZ II 12/20

fischer

Model 3501	zinc-plated steel (interior)	V4A (outside)
Art. no.	91.3501.220.81	91.3501.220.30



HIDDEN LEVEL | FIXING ANCHOR



Bolt anchor M16/25

Essential Features:

- | Finish interior application: zinc-plated steel (interior)
- | Finish exterior application: V4A (outside)
- | M16
- | Sales unit **Modell 36xx**: 20 pieces
- | Sales unit **Modell 35xx**: 10 pieces
- | Suitable mortar for **Model 36xx**: 91.3600.010.00
- | Suitable mortar for **Model 35xx**: 91.3000.010.00
- | Injection mortar, sufficient for:
Modell 36xx ± 20 anchors
Modell 35xx ± 10 anchors

Fixing Anchor BZ 16-25-45/145



Model 3601	zinc-plated steel (interior)	V4A (outside)
Art. no.	91.3601.625.81	91.3601.625.30

Fixing Anchor FAZ II 16/25



Model 3501	zinc-plated steel (interior)	V4A (outside)
Art. no.	91.3501.625.81	91.3501.625.30



HIDDEN LEVEL | FIXING ANCHOR



Bolt anchor M12/15 & M12/10

- Essential Features:**
- | Finish interior application: zinc-plated steel (interior)
 - | Finish exterior application: V4A (outside)
 - | M12
 - | Sales unit: 20 pieces

Fixing Anchor BZ 12-15-35/110

ONLEVEL

Model 3601	zinc-plated steel (interior)	V4A (outside)
Art. no.	91.3601.210.81	91.3601.210.30

Fixing Anchor FAZ II 12/10

fischer

Model 3501	zinc-plated steel (interior)	V4A (outside)
Art. no.	91.3501.210.81	91.3501.210.30





Fixing Anchor BZ-IG M8 & 10/10 S

- Essential Features:**
- | Finish interior application: zinc-plated steel (interior)
 - | Finish exterior application: V4A (outside)
 - | Sales unit: 50 pieces

Fixing anchor BZ-IG M8



Model 3621	zinc-plated steel (interior)	V4A (outside)
Art. no.	91.3621.010.81	91.3621.010.30

Fixing Anchor FH II 10/10 S



Model 3521	zinc-plated steel (interior)	V4A (outside)
Art. no.	91.3521.010.81	91.3521.010.30



HIDDEN LEVEL | MORTAR



Mortar

- Essential Features:**
- | For chemical anchor bonding
 - | Including 2 mixers
 - | Sales unit: 1 piece

Mortar VMH 280

ONLEVEL

Mortar FIS SB 390 S

fischer

Model 3600

Art. no. 91.3600.010.00



Model 3000

Art. no. 91.3000.010.00



HIDDEN LEVEL | FURTHER FIXING ANCHORS

Screw Anchor for Concrete



- | Suitable for our profiles without countersinking
- | Finish interior application: zinc-plated steel (interior) HUS3-H 10x90
- | Finish exterior application: V4A (outside) HUS3-HR 10x95
- | Tangential screwdriver required

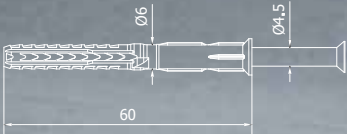


Model 3701 zinc-plated steel (interior)		Model 3701 V4A (outside)	
Sales unit	Art. no.	Sales unit	Art. no.
50	91.3701.090.81	25	91.3701.095.30

Startrack Erection Bolt



- | Ø 4.5 x 60 mm
- | Required number per 2500 mm : 13 / per 5000 mm: 25
- | Sales unit: 50 pieces



Model 9010 Steel, zinc-plated	
Sales unit	Art. no.
50	20.9010.660.81

SAMPLE BOXES

Handrail tube sample



| Length: 200 mm

	AISI 316 (exterior)
Diameter	Art. no.
42.4	81.2106.421.31
48.3	81.2106.481.31

Handrail tube sample



| Length: 200 mm

	AISI 316 (exterior)
Height x width	Art. no.
26 x 20	81.2114.262.31
30 x 25	81.2114.302.31
40 x 30	81.2114.402.31

KRONOS Sample Box



Kronos	
Finish	Art. no.
V4A	81.5500.420.31



WE'RE ONLEVEL. YOU'RE ON FIRE.

Let's Do It!

We're **ONLEVEL**. This is not just a slogan. This is our philosophy. This is the way we work. For you! For keeping you "on fire" about mounting, quality and design.

We're Onlevel. You're On Fire.

As you know: Mounting our products is considerably quicker and easier. In addition, they are available in all reasonable shapes and the installation is as easy as can be, so that you save time and money. And what about the design? You have seen it for yourself. Additionally, it is precisely tailored to your needs, as **ONLEVEL** will prepare everything according to your wishes and preferences. Simply get in touch with our Service Team. Then the spark will jump over to you ...

+44 0161 804 9500
info@onlevel.com



ABOUT THIS CATALOGUE

Print-related colour variations are possible. ONLEVEL GmbH & ONLEVEL Ltd. do not assume any liability for printing errors or other mistakes in this catalogue. Industrial property rights, such as patents, samples or design patents are registered or pending for numerous products – also by third parties.

© Copyright by ONLEVEL - All parts of this catalogue (texts, images, etc.) are protected by copyright. Any use outside the narrow limits of copyright law are inadmissible without the written consent of ONLEVEL GmbH & ONLEVEL Ltd. This is especially applicable to reprints, reproductions, translations, microfilming and data saved and processed in electronic systems. Time of printing: September 2023

GENERAL TERMS AND CONDITIONS

1. SCOPE

These General Terms and Conditions shall apply to all goods and services distributed by ONLEVEL to the customer, including application-oriented advice and consulting customer.

2. CONTRACT, RESERVATION OF CHANGES, MINIMUM ORDER VALUE, QUOTATION DOCUMENTS, ETC.

2.1 All information and specifications in catalogues, flyers or other documents are non-binding. Contracts between ONLEVEL and their customers are accepted via order confirmations sent by ONLEVEL in written or electronic form, by email or fax. The order confirmation is conclusive evidence of formation of the contract. If ONLEVEL delivers goods without prior order confirmation, the contract shall be deemed effective upon the beginning of the service or delivery of the ordered goods.

2.2 If the ordered goods are no longer available or have been replaced, ONLEVEL reserves the right to deliver similar product(s) of a similar or improved quality.

2.3 The minimum order value for export orders is £1000. For orders of a value between £500 and £1,000 a processing charge of £100 will be added. Spare parts and services are exempt of minimum order value.

3. PRICES, TERMS OF PAYMENT

3.1 All prices are quoted „ex works“ Emmerich/Manchester, plus VAT. Shipping and freight charges, insurance, taxes, packaging costs and possible installation costs are not included. If the order value is below a net product value of £250, a handling fee per shipment of £20 shall apply.

3.2 ONLEVEL reserves the right to amend catalogue prices at any time. The respective list prices at the time of the order are binding unless the price for the goods has been agreed at a higher price within the order confirmation in which case the higher price shall be binding. customer

3.3 ONLEVEL may, by giving notice to the customer at any time before delivery, increase the price of the goods to reflect any increase in the cost of the goods that is due to:

(a) any factor beyond ONLEVEL's control (including foreign exchange fluctuations, increases in taxes and duties, and increases in labour, materials and other manufacturing costs);

(b) any request by the customer to change the delivery date(s), quantities or types of goods ordered, or the specification; or

(c) any delay caused by any instruction or lack of instruction of the customer or failure of the customer to give ONLEVEL adequate or accurate information or instructions.

(d) failure by the customer to accept delivery of the goods.

3.4 The purchase price is payable either by electronic bank transfer or by irrevocable, confirmed letter of credit issued to ONLEVEL's indicated bank, unless agreed otherwise in the order confirmation. All bank charges outside Germany are for the account of the customer. ONLEVEL covers all bank charges inside the UK. If the customer is overdue in making the payment, ONLEVEL is entitled to demand default interest of 5% above the Bank of England base lending rate from time to time.

3.5 Save where ONLEVEL requires pre-payment for the goods, all amounts due under the contract shall be paid in full within 13 days of delivery without any right of set off, counterclaim, deduction or withholding (other than any deduction or withholding of tax as required by law).

3.6 ONLEVEL reserve the right to supply their goods only on prepayment or by cash on delivery.

4. DELIVERY, DELIVERY TIME*

4.1 All deliveries shall be made „ex works“ Emmerich/Manchester according to Incoterms 2010.

4.2 Partial deliveries are permissible if not all ordered goods are available and in so far as the customer can be reasonably expected to accept such partial deliveries. ONLEVEL reserves the right to invoice and request payment of such partial deliveries separately.

4.3 In the event of a partial delivery as in clause 4.2, any delay in delivery or defect

in an instalment shall not entitle the customer to cancel any other instalment of goods pending.

4.4 Delivery or performance dates in relation to the supply by ONLEVEL of goods are approximate only and, unless otherwise expressly stated, time is not of the essence for delivery of the Goods.

4.5 ONLEVEL shall not be in breach of the contract nor liable for delay in performing, or failure to perform, any of its obligations under the contract if such delay or failure results from an event, circumstance or cause beyond their control including but not limited to ("Force Majeure Event"). In such circumstances ONLEVEL shall be entitled to a reasonable extension of the time for performing its obligations. If the period of delay or nonperformance continues beyond such reasonable extension, the party not affected may terminate this agreement by giving written notice to the affected party.

4.6 Time of delivery for the purposes of this clause shall be the day when the delivery or partial delivery is made available for collection or shipment or the day the goods are handed over to the forwarding agent.

5. TRANSFER OF RISK, SHIPMENT

5.1 Risk and responsibility for the goods shall pass to the customer once they have been delivered in accordance with clause 4 of these terms.

5.2 If the customer delays in accepting the service or infringes other cooperation duties, the risk of accidental loss or deterioration of the goods will pass to the customer at the moment in which his delay in acceptance commences.

5.3 The selection of the mode of despatch, packing and shipment shall be reserved to ONLEVEL.

5.4 The Customer is responsible for obtaining, at its own cost, such import licences and other consents in relation to the goods as are required from time to time and, if required by ONLEVEL, the customer shall make those licences and consents available to ONLEVEL prior to the relevant shipment.

6. PACKAGING

6.1 The price of the goods excludes the costs and charges of packaging, insurance and transport of the goods, which shall be invoiced to the customer.

6.2 The customer shall be responsible for the disposal of all packaging.

6.3 All packaging materials are to be disposed of by the customer in a recyclable and environmentally friendly way.

7. RETURN OF GOODS

7.1 The Customer shall, within seven days of the arrival of each delivery of the Goods at the Delivery Point, give written notice of rejection to the ONLEVEL on account of any defect by reason of which the Customer alleges that the Goods delivered do not comply with the Warranty and which was apparent on reasonable inspection.

7.2 If the Customer fails to give notice as specified in clause 7.1 then, except in respect of any defect which is not one which would be apparent on reasonable inspection, the Goods shall conclusively be presumed to comply with the Warranty and, accordingly, the Customer shall be deemed to have accepted the delivery of the Goods in question and the ONLEVEL shall have no liability to the Customer with respect to that delivery (except in relation to liability for any latent defects).

7.3 If the Customer alleges that any Goods are defective, it shall, if so requested by the ONLEVEL, return the relevant Goods (unaltered and unrepairs) to the ONLEVEL for inspection as soon as possible and at its own risk and expense.

7.4 If the Customer rejects any delivery of the Goods which do not comply with the Warranty, the ONLEVEL shall, within seven days of the ONLEVEL accepting that the Goods do not comply with the Warranty:

(a) supply replacement Goods which comply with the Warranty, in which event the ONLEVEL shall be deemed not to be in breach of this agreement or have any liability to the Customer for the rejected Goods; or

(b) notify the Customer that it is unable to supply replacement Goods, in which case the Customer shall be entitled to obtain from any other person such quantity of the Goods only as the ONLEVEL has been unable to supply and the ONLEVEL shall grant to the Customer a credit equal to the value of the Goods which the ONLEVEL agrees do not comply with the Warranty.

7.5 ONLEVEL's decision as to whether the Goods comply with the Specification shall be final.

8. WARRANTY

8.1 ONLEVEL warrants that the goods sold by it will conform in all material respects to their published specifications from time to time. All other warranties or conditions (whether express or implied) as to quality, condition, description, compliance with sample or fitness for purpose are excluded from this agreement to the fullest extent permitted by law.

9. LIABILITY

9.1 ONLEVEL's total liability in contract, tort (including negligence), misrepresentation or otherwise in relation to the contract shall be limited to the aggregate amounts paid by the Customer for goods (excluding Expenses) during the previous 11 months, or, if the date of the breach is less than 11 months, the aggregate of the amounts paid by the customer over the period since the first delivery pro-rated to the equivalent of a 11-month period.

9.2 Other than as set out in clause 13.7 and clause 13.8 ONLEVEL shall not be liable to the Customer for:

- (a) any indirect, special or consequential loss or damage; or
- (b) loss of data or other equipment or property; or
- (c) economic loss or damage; or
- (d) incurring of liability for loss or damage of any nature whatsoever suffered by third parties (including in each case incidental and punitive damages); or
- (e) any loss of actual or anticipated profit, interest, revenue, anticipated savings or business or damage to goodwill, even if ONLEVEL is advised in advance of the possibility of any such losses or damages.

9.3 ONLEVEL shall not be liable for any losses arising from the customer's subsequent use or misuse of the goods including (without limitation):

- (a) fair wear and tear;
- (b) wilful damage;
- (c) the Customer's negligence, or that of its agents or employees, or any failure to follow ONLEVEL's instructions as to use of the goods;
- (d) abnormal working conditions beyond those referred to in the Specification; and
- (e) any alteration or repair of the Products by any manufacturing process or otherwise, save for any latent defect which means that the goods did not comply with the Specification.

9.4 ONLEVEL is not liable for a defect in the goods unless it is notified to ONLEVEL within 7 days of the date of delivery in accordance with clause 7.1 or in the case of latent defects not discoverable on reasonable inspection within 21 days of the date of delivery.

9.5 ONLEVEL is not liable for:

- (a) non-delivery, unless the customer notifies ONLEVEL of the claim within 7 working days of the date of invoice; or
- (b) shortages in the quantity of Products delivered in excess of those permitted by clause 4, unless the Customer notifies ONLEVEL of a claim within 15 working days of receipt of the goods; or
- (c) damage to or loss of all or part of the goods in transit (where the goods are carried by the ONLEVEL's own transport or by a carrier on behalf of ONLEVEL), unless the customer notifies ONLEVEL within 7 working days of receipt of the Goods or the scheduled date of delivery, whichever is the earlier.

10. RETENTION OF OWNERSHIP

10.1 Ownership of the goods shall not pass to the Customer until ONLEVEL has received payment in full of all monies due from the customer under the contract.

10.2 Until ownership of the Goods passes to the Customer, the Customer shall hold the Goods on the following terms:

- (a) the Goods shall be stored separately from other goods held by the Customer and shall be clearly identifiable as the property of the ONLEVEL;
- (b) the Goods shall not be mixed with other goods or altered in any way;
- (c) the Goods shall be adequately stored and maintained in a satisfactory condition; and
- (d) each Product shall be insured for an amount at least equal to its List Price and any proceeds of the insurance policy shall be held on trust for ONLEVEL in a separate account in the joint names of the ONLEVEL and the Customer. The Customer shall not mix the insurance proceeds with any other money or pay the proceeds into an overdrawn bank account.

(e) The Customer shall account to the ONLEVEL for the proceeds accordingly and make good any shortfall in the amount due to the ONLEVEL.

10.3 The Customer may resell (but may not deal in any other way with) the Goods to a third party and pass good title to that third party on the following terms:

- (a) the sale is in the ordinary course of the Customer's business; and
- (b) the Customer holds the proceeds of any resale on trust for the ONLEVEL in a separate account in the joint names of the ONLEVEL and the Customer and does not mix them with any other money or pay the proceeds into an overdrawn bank account. The Customer shall account to the ONLEVEL for the proceeds accordingly and shall make good any shortfall in the amount due to the ONLEVEL.

10.4 The Customer shall lose its rights to possession and resale of the Goods if:

- (a) the Customer becomes subject to any of the events in clause 11; or
- (b) this agreement terminates and the Customer does not pay all outstanding amounts under this agreement within 13 days; or
- (c) the Customer suffers any legal or equitable execution to be levied on its property.

10.5 The Customer grants to ONLEVEL an irrevocable licence for ONLEVEL, its agents and employees to enter any premises where the goods of the Customer are stored to ascertain whether any Goods are stored there and to inspect, count and recover them.

10.6 The Customer shall register any necessary charge over money or goods and take such other steps as are necessary to give effect to this clause 10 at the request of the ONLEVEL.

11. TERMINATION

11.1 Without limiting its other rights or remedies, ONLEVEL may terminate this contract with immediate effect by giving written notice to the customer if:

- (a) the customer commits a material breach of any term of the contract and (if such a breach is remediable) fails to remedy that breach within 13 days of that party being notified in writing to do so;
- (b) the customer takes any step or action in connection with its entering administration, provisional liquidation or any composition or arrangement with its creditors (other than in relation to a solvent restructuring), being wound up (whether voluntarily or by order of the court, unless for the purpose of a solvent restructuring), having a receiver appointed to any of its assets or ceasing to carry on business;
- (c) the customer suspends, threatens to suspend, ceases or threatens to cease to carry on all or a substantial part of its business; or
- (d) the customer's financial position deteriorates to such an extent that in the opinion of ONLEVEL the customer's capability to adequately fulfil its obligations under the contract has been placed in jeopardy.

11.2 Without limiting its other rights or remedies, ONLEVEL may suspend provision of the goods under the contract or any other contract between the customer and ONLEVEL if the customer becomes subject to any of the events listed in clause 11.1(a) to clause 11.1(d), or ONLEVEL reasonably believes that the customer is about to become subject to any of them, or if the customer fails to pay any amount due under this contract on the due date for payment.

11.3 Without limiting its other rights or remedies, ONLEVEL may terminate the contract with immediate effect by giving written notice to the customer if the customer fails to pay any amount due under the contract on the due date for payment.

11.4 On termination of the contract for any reason the customer shall immediately pay to ONLEVEL all of the outstanding unpaid invoices and interest and, in respect of goods supplied but for which no invoice has been submitted, ONLEVEL shall submit an invoice, which shall be payable by the customer immediately on receipt.

11.5 Termination of the contract, however arising, shall not affect any of the parties' rights and remedies that have accrued as at termination, including the right to claim damages in respect of any breach of the contract which existed at or before the date of termination.

11.6 Any provision of the contract that expressly or by implication is intended to come into or continue in force on or after termination of the contract shall remain in full force and effect.

12. DATA PROTECTION

The customer acknowledges that under the Data Protection Act, personal data obtained from the contractual relationship are stored by ONLEVEL for the purpose of data processing. No data will be passed on to third parties.

13. INTELLECTUAL PROPERTY RIGHTS

In this clause Intellectual Property Rights shall mean: all patents, rights to inventions, copyright and related rights, moral rights, trademarks and service marks, business names and domain names, rights in get-up and trade dress, goodwill and the right to sue for passing off or unfair competition, rights in designs, rights in computer software, database rights, rights to use, and protect the confidentiality of, confidential information (including know-how and trade secrets) and all other intellectual property rights, in each case whether registered or unregistered and including all applications and rights to apply for and be granted, renewals or extensions of, and rights to claim priority from, such rights and all similar or equivalent rights or forms of protection which subsist or will subsist now or in the future in any part of the world in or associated with the Goods. 13.1 The Customer acknowledges that:

(a) the Intellectual Property Rights are the property of ONLEVEL (or its licensor's);
(b) nothing in this agreement shall be construed as conferring any licence or granting any rights in favour of the customer in relation to the Intellectual Property Rights. ONLEVEL asserts its full rights to control the use of its trademarks within the EEA and worldwide and the customer shall assist the ONLEVEL as required in preventing parallel importers from diluting the ONLEVEL's rights; and
(c) any reputation in any trademarks affixed or applied to the goods shall accrue to the sole benefit of the ONLEVEL or any other owner of the trade marks from time to time.

13.2 The Customer shall not repack the Goods and/or remove any copyright notices, confidential or proprietary legends or identification from the Goods save for any removal which is a necessary result of a manufacturing process of which the ONLEVEL has been previously notified in writing by the customer.

13.3 The customer shall not use (other than pursuant to this agreement) or seek to register any trade mark or trade name (including any company name) which is identical to, confusingly similar to or incorporates any trade mark or trade name which the ONLEVEL or any associated company of ONLEVEL owns or claims rights in anywhere in the world.

13.4 If at any time it is alleged that the Goods infringe the rights of any third party or if, in the ONLEVEL's reasonable opinion, such an allegation is likely to be made, the ONLEVEL may at its option and its own cost:

(a) modify or replace the Goods in order to avoid the infringement; or
(b) procure for the customer the right to continue using the goods; or
(c) repurchase the goods at the price paid by the customer, less depreciation at the rate that ONLEVEL applies to its own equipment.

13.5 The customer shall promptly and fully notify ONLEVEL of:

(a) any actual, threatened or suspected infringement of any Intellectual Property Rights which comes to the Customer's notice; and
(b) any claim by any third party that comes to the customer's notice that the sale or advertisement of the Goods infringes the rights of any person.

13.6 The Customer agrees (at ONLEVEL's request and expense) to do all such things as may be reasonably required to assist the ONLEVEL in taking or resisting any proceedings in relation to any infringement or claim referred to in clause 13.5.

13.7 In the event of any claim, proceeding or suit by a third party against the customer alleging an infringement of any Intellectual Property Right connected with the goods, ONLEVEL shall defend the customer at the ONLEVEL's expense, subject to:

(a) the customer promptly notifying the ONLEVEL in writing of any such claim, proceeding or suit; and
(b) ONLEVEL being given sole control of the defence of the claim, proceeding or suit, and provided that the ONLEVEL shall not be liable for infringements to the extent that they arise out of or in connection with modifications to the goods made by anyone except ONLEVEL or its authorised representative, or out of use or combination of the goods with goods or third party materials not specified or expressly approved in advance in writing by ONLEVEL, or where the claim, proceeding or suit arises from ONLEVEL's adherence to the customer's requested changes to the specification or from infringing items of the customer's origin, design or selection.

13.8 ONLEVEL shall reimburse the customer with an amount equal to any

reasonable cost, expense or legal fees incurred at ONLEVEL's written request or authorisation.

14. VARIATION

No variation of this Contract shall be effective unless it is in writing and signed by the parties (or their authorised representatives).

15. SEVERANCE

If any provision or part-provision of the Contract is or becomes invalid, illegal or unenforceable, it shall be deemed deleted, but that shall not affect the validity and enforceability of the rest of this agreement. If any provision of the Contract is deemed deleted under this Clause 15 the parties shall negotiate in good faith to agree a replacement provision that, to the greatest extent possible, achieves the intended commercial result of the original provision.

16. PLACE OF PERFORMANCE, COURT OF JURISDICTION, APPLICABLE LAW

16.1 At the option of ONLEVEL, the place of performance shall either be the competent court of jurisdiction for the ONLEVEL headquarters or the customer's headquarters, in so far as the customer is a merchant, an entity of public law or special funds of public law.

16.2 The place of performance for delivery shall be the place where the goods are stored for the purpose of being despatched or handed over to the customer. The place of performance for paying the purchase price and for fulfilling all other contractual obligations shall be Emmerich/Manchester.

16.3 For all legal relationships and disputes between the contractual parties arising from this contract, the English Law of Contract shall apply exclusively, excluding the UN Sales Convention.

*Please note that it is the recipient's responsibility to check each delivery for damages to the packaging. Any damaged parcels must be signed for as damaged at the time of delivery; unfortunately, ONLEVEL Ltd will not take any responsibility for parcels not checked at the time of delivery.

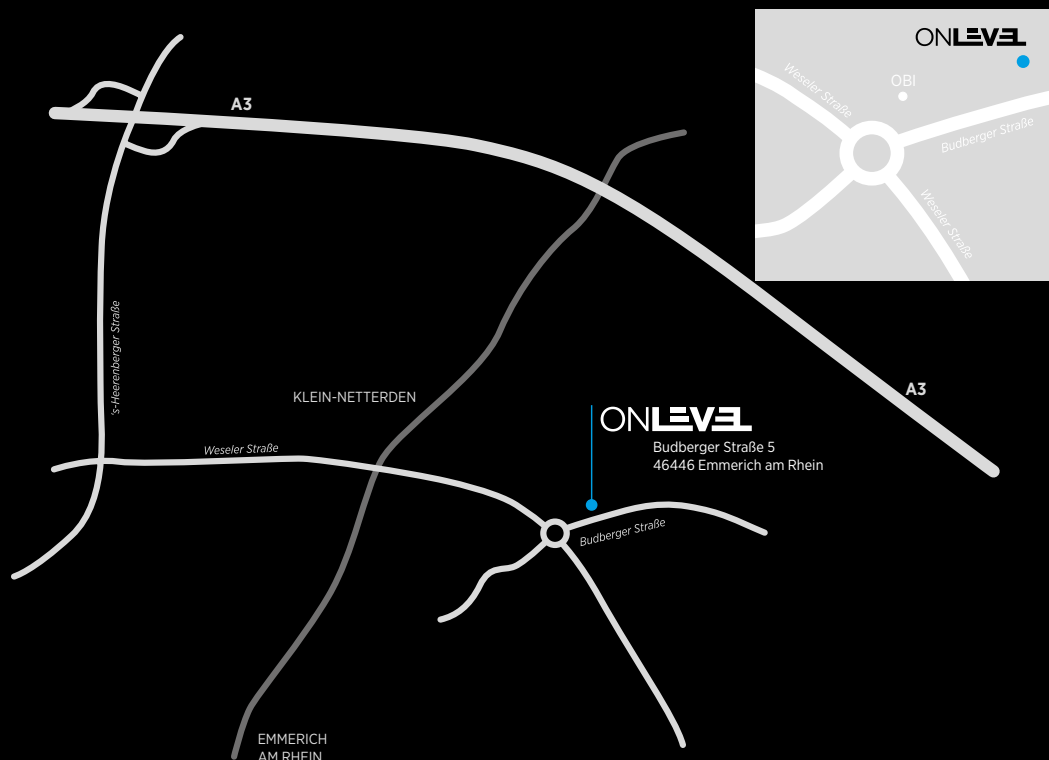
ONLEVEL GmbH

ONLEVEL GmbH

Budberger Straße 5
46446 Emmerich am Rhein
Germany

T +49 (0)2822 97514-0

info@onlevel.com
www.onlevel.com



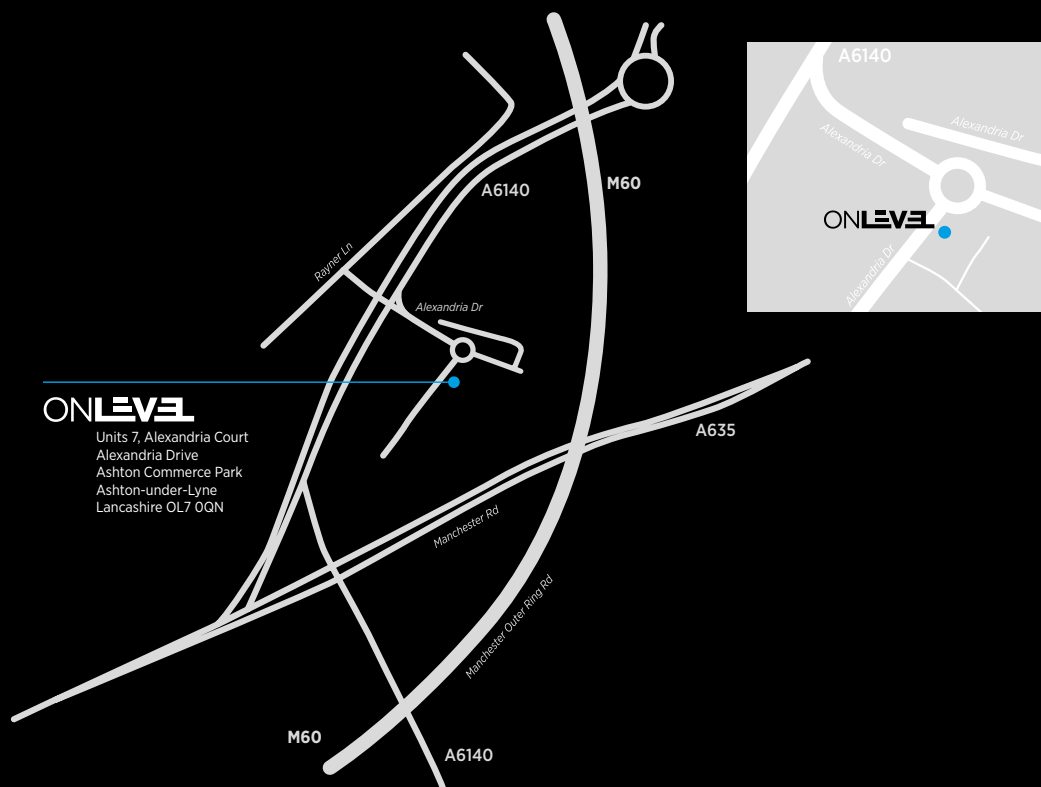
ONLEVEL Ltd.

ONLEVEL Ltd.

Units 7, Alexandria Court
Alexandria Drive
Ashton Commerce Park
Ashton-under-Lyne
Lancashire OL7 0QN
United Kingdom

T +44 0161 804 9500
F +44 0161 804 9505

info@onlevel-uk.com
www.onlevel.com

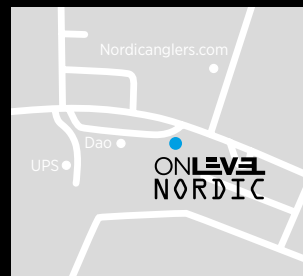


ONLEVEL NORDIC

ONLEVEL Nordic Aps.

Gunnar Clausens Vej 26B
DK-8260 Viby J
Danmark

T : +45 28 57 55 11
djonni@onlevel.com
www.onlevel.com





ONLEVEL

ONLEVEL Ltd. | Units 7, Alexandria Court | Alexandria Drive
Ashton Commerce Park | Ashton-under-Lyne | Lancashire OL7 0QN | United Kingdom
T +44 0161 804 9500 | F +44 0161 804 9505 | info@onlevel-uk.com | www.onlevel.com