

ONLEVEL

**TL1010**  
SYSTEMS FOR FRAMELESS  
ALL-GLASS BALUSTRADES

**NEW: ONLINE CONFIGURATOR**

# TL-1010

1.0 kN top mount

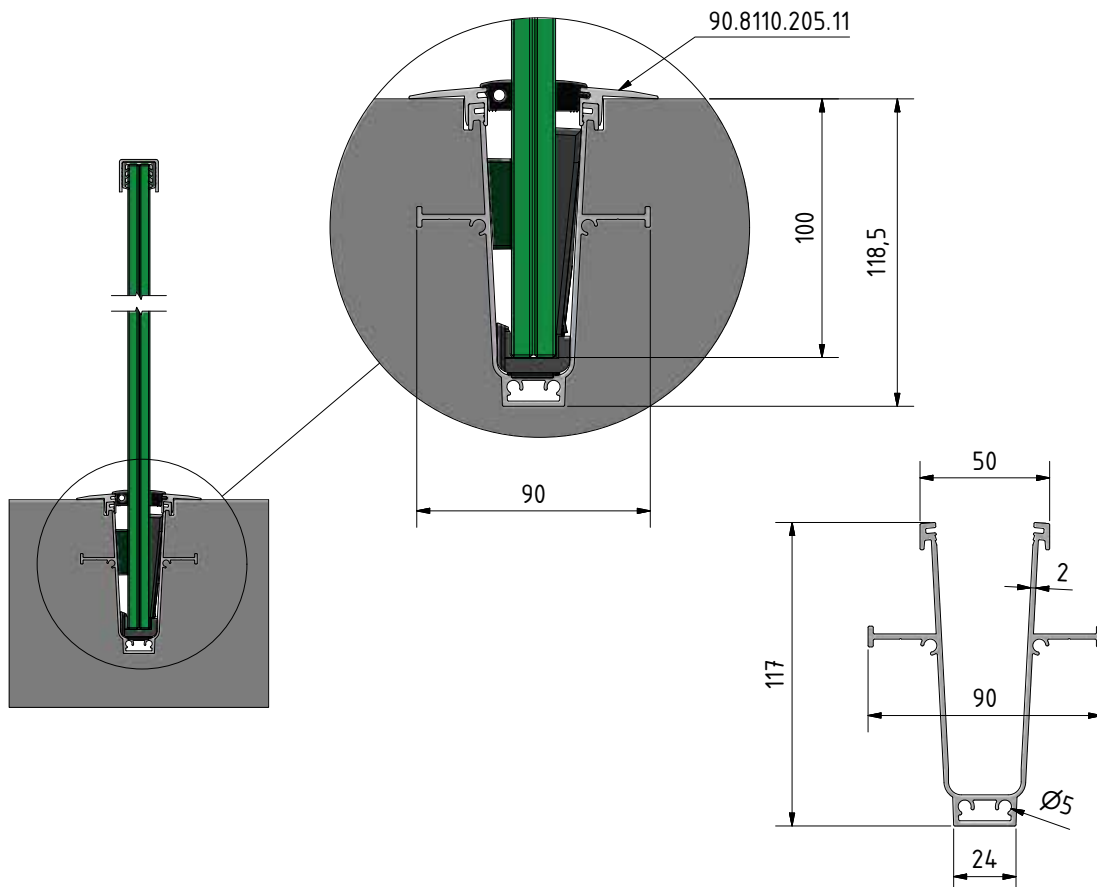
## The Playmaker – better safe than sorry.

With the TL-1010 profile, you have every freedom. It knows the game both on the left and on the right, fits into the spatial depth and always keeps on top of things. Playmaker gives you two mounting possibilities in concrete. It is either cast in concrete (from above) ex works or it is inserted into the finished floor (from below).

As a matter of fact, there are a drainage channel, end caps with a drainage hose connection and extension pin channels.

## Essential Features

- | Slimline, elegant design and low-maintenance
- | **ONLEVEL** FLEXFIT Glass Adjustment Tool
- | With integrated drainage
- | Cover (optional)
- | For glass thicknesses between 12 - 21.52 mm





Mounting in concrete



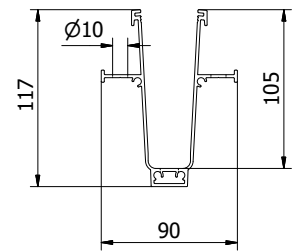
Drainage channel

# TL-1010 | 1.0 KN TOP MOUNT

## Glass profile



| Sales unit: 1 piece

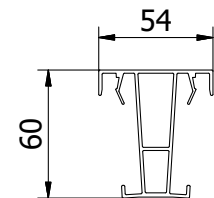


| Model 1010 | Plain aluminium | Plastic        |
|------------|-----------------|----------------|
| Length     | Art. no.        | Art. no.       |
| 5000       | 10.1010.005.11  | 10.1010.005.41 |

## Concrete casting profile



| Please use with glass profile 10.1010.005.11 to avoid deformations  
| Sales unit: 1 piece

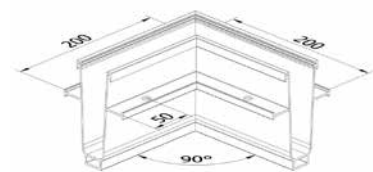


| Model 1010 | Plain aluminium |
|------------|-----------------|
| Length     | Art. no.        |
| 5000       | 10.1010.205.11  |

## Inside corner / outside corner 90°



| Side length inside: 112.5 mm  
| Side length outside: 200 mm  
| Sales unit: 1 piece

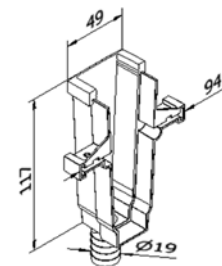


| Model 1010 | Plain aluminium |
|------------|-----------------|
|            | Art. no.        |
|            | 10.1010.390.11  |

## End cap, left/right with drainage connection



| for use on the left and right  
| Drainage connection Ø 19 mm  
| Sales unit: 2 pieces



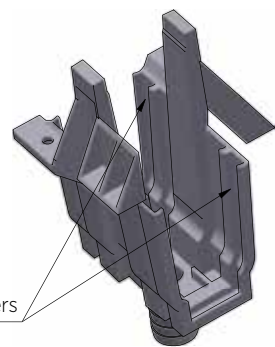
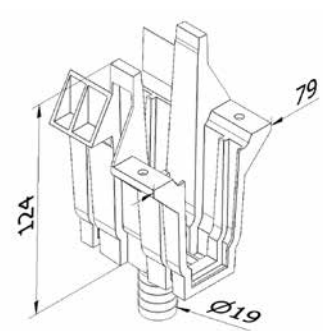
| Model 1010  | Plastic        |
|-------------|----------------|
| Application | Art. no.       |
| left/right  | 10.1010.490.41 |

# TL-1010 | 1.0 KN TOP MOUNT

## Connector with drainage outlet



- | Outlet Ø 19 mm
- | Sales unit: 2 pieces

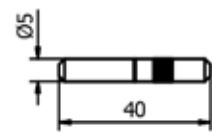


| Model 1010 | Plastic        |
|------------|----------------|
|            | Art. no.       |
|            | 10.1010.790.41 |

## Extension pin.



- | Length: 40 mm
- | Diameter: Ø 5 mm
- | Sales unit: 8 pieces

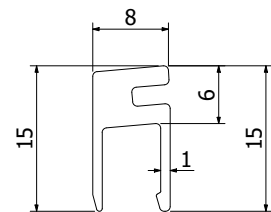


| Model 7001 | AISI 316 (inside & outside) |
|------------|-----------------------------|
| for        | Art. no.                    |
| aluminium  | 90.7001.540.31              |
| plastic    | 90.7001.440.31              |

## 1.0KN Top Cover 0mm



- | With 0mm (makes only height adjustment)
- | Can be used if 1 side a top cover is used and same level is requested
- | Sales unit 1 pcs



| TopCover | Material       |
|----------|----------------|
|          | Art. no.       |
|          | 90.8010.005.11 |

# TL-1010 | 1.0 KN TOP MOUNT

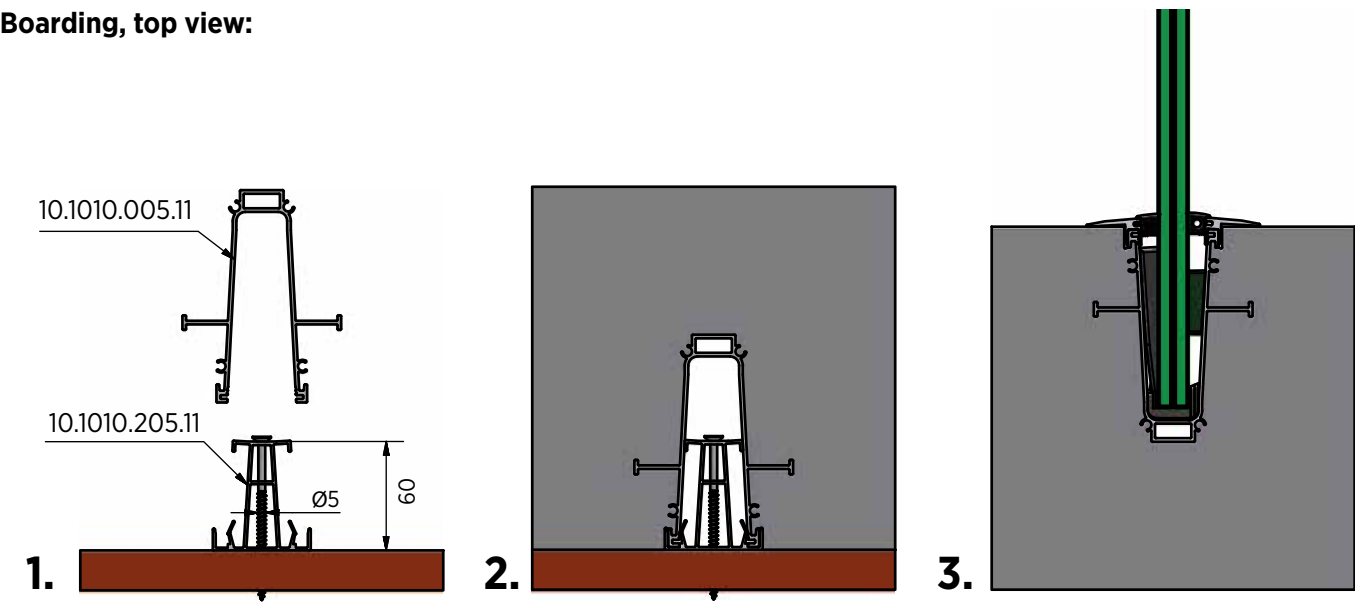
## FLEXFIT 1.0 kN



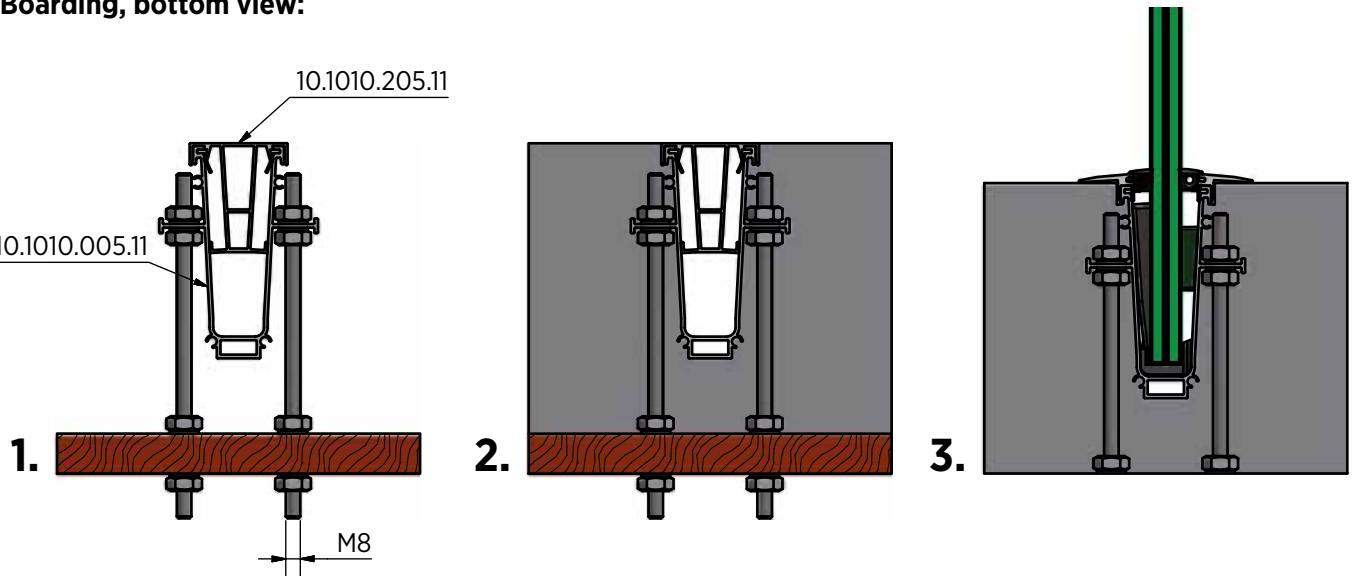
- | Fine adjustment of glass panes
- | For glass thicknesses between 12 - 21.52 mm
- | Adjustment of up to 34 mm in relation to the vertical axis - Pay attention to the right glass thickness!

| Length                    |              | 2500 mm        | 5000 mm        | 25 mtr         |
|---------------------------|--------------|----------------|----------------|----------------|
| Glass thickness           | Wedge colour | Art. no.       | Art. no.       | Art. no.       |
| 12 mm                     | black        | -              | 90.0505.112.00 | -              |
| 6/6/2 (12.76 mm)          | red          | 90.0502.113.00 | 90.0505.113.00 | 90.0525.113.00 |
| 6/6/4 (13.52 mm)          | grey         | -              | 90.0505.114.00 | -              |
| <b>8/8/2 (16.76 mm)</b>   | red          | 90.0502.117.00 | 90.0505.117.00 | 90.0525.117.00 |
| <b>8/8/4 (17.52 mm)</b>   | green        | 90.0502.118.00 | 90.0505.118.00 | 90.0525.118.00 |
| <b>10/10/2 (20.76 mm)</b> | red          | 90.0502.121.00 | 90.0505.121.00 | 90.0525.121.00 |
| <b>10/10/4 (21.52 mm)</b> | green        | 90.0502.122.00 | 90.0505.122.00 | 90.0525.122.00 |

### Boarding, top view:



### Boarding, bottom view:





## TL-1010 | 1.0 KN TOP MOUNT

Drainage example:











# ONLEVEL

**ONLEVEL Ltd.** | Unit 7, Alexandria Court | Alexandria Drive  
Ashton Commerce Park | Ashton-under-Lyne | Lancashire OL7 0QN | United Kingdom  
T +44 0161 804 9500 | F +44 0161 804 9505 | [info@onlevel-uk.com](mailto:info@onlevel-uk.com) | [www.onlevel.com](http://www.onlevel.com)