



ON LEVEL

TL20
POINT FIXINGS

TL-20 | POINT FIXINGS

Side Mount

One Point Goes To...

ON**LEVEL** point fixing systems make the difference. ON**LEVEL** always attaches great importance to simple mounting and an unobtrusive design. With our point fixings, realising constructive special solutions becomes very easy. Here as well, practical relevance is our maxim. Tested in innumerable projects. For this purpose, our products are tested for different requirements by independent institutions.



TESTED
according to
BS6180

For simple constructions
in individual applications

Available with
different diameters



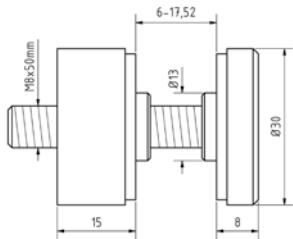
Adjustable versions
available

TL-20 | SIDE MOUNT

Point fixing Ø 30 mm



- | Finish inside: V2A
- | Finish outside: V4A
- | These adaptors are not suitable as a fall protection
- | Sales unit: 2 pieces

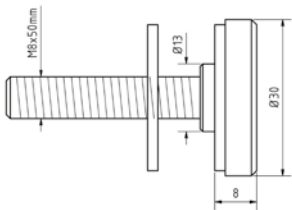


Model 2030	AISI 304 (inside)	AISI 316 (outside)
	Art. no.	Art. no.
	10.2030.200.21	10.2030.200.31

Point fixing Ø 30 mm



- | Finish inside: V2A
- | Finish outside: V4A
- | These adaptors are not suitable as a fall protection
- | Sales unit: 2 pieces

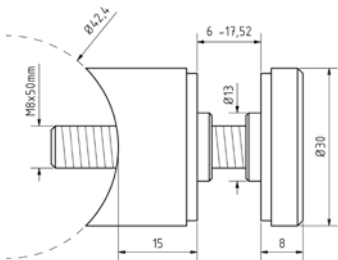


Model 2230	AISI 304 (inside)	AISI 316 (outside)
	Art. no.	Art. no.
	10.2230.000.21	10.2230.000.31

Point fixing Ø 30 mm



- | Connector: round 42.4 mm
- | Finish inside: V2A
- | Finish outside: V4A
- | These adaptors are not suitable as a fall protection
- | Sales unit: 2 pieces

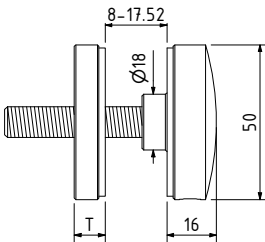


Model 2030	AISI 304 (inside)	AISI 316 (outside)
	Art. no.	Art. no.
	10.2030.420.21	10.2030.420.31

Point fixing Ø 50 mm



- | Finish inside: V2A
- | Finish outside: V4A
- | Sales unit: 2 pieces



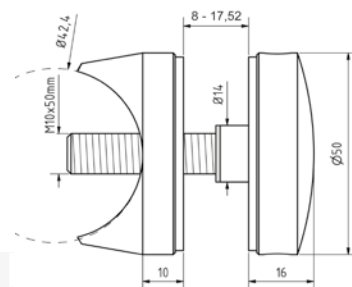
Model 2050		AISI 304 (inside)	AISI 316 (outside)
Depth	Length	Art. no.	Art. no.
10 mm	60 mm	10.2050.100.21	10.2050.100.31
20 mm	70 mm	10.2050.200.21	10.2050.200.31
30 mm	80 mm	10.2050.300.21	10.2050.300.31
40 mm	80 mm	10.2050.400.21	10.2050.400.31
50 mm	90 mm	10.2050.500.21	10.2050.500.31

TL-20 | SIDE MOUNT

Point fixing Ø 50 mm



- | Connector: round 42.4 mm
- | Finish inside: V2A
- | Finish outside: V4A
- | Sales unit: 2 pieces

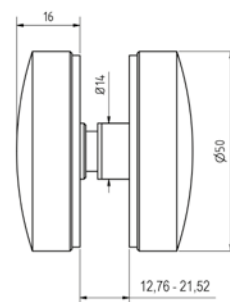


Model 2050	AISI 304 (inside)	AISI 316 (outside)
	Art. no.	Art. no.
	10.2050.420.21	10.2050.420.31

Point fixing Ø 50 mm



- | Finish inside: V2A
- | Finish outside: V4A
- | Sales unit: 2 pieces

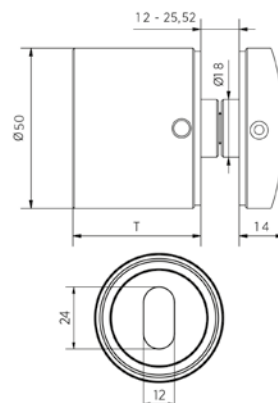


Model 2850	AISI 304 (inside)	AISI 316 (outside)
	Art. no.	Art. no.
	10.2850.000.21	10.2850.000.31

Point fixing Ø 50 mm, adjustable



- | Finish inside: V2A
- | Finish outside: V4A
- | Sales unit: 2 pieces

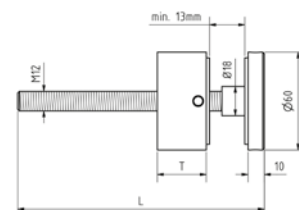


Model 2550	AISI 304 (inside)	AISI 316 (outside)
Depth	Art. no.	Art. no.
30 mm	10.2550.300.21	10.2550.300.31
40 mm	10.2550.400.21	10.2550.400.31
50 mm	10.2550.500.21	10.2550.500.31

Point fixing Ø 60 mm, 0.74 kN



- | Finish inside: V2A
- | Finish outside: V4A
- | Sales unit: 2 pieces



Model 2060	AISI 304 (inside)	AISI 316 (outside)
Depth	Length	Art. no.
10 mm	120 mm	10.2060.100.21
20 mm	130 mm	10.2060.200.21
30 mm	140 mm	10.2060.300.21
40 mm	150 mm	10.2060.400.21
50 mm	160 mm	10.2060.500.21

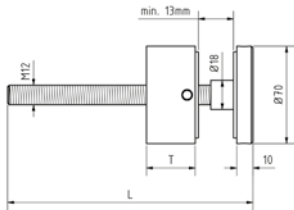
TL-20 | SIDE MOUNT

Point fixing Ø 70 mm



- | Finish inside: V2A
- | Finish outside: V4A
- | Sales unit: 2 pieces

Model 2070		AISI 304 (inside)	AISI 316 (outside)
Depth	Length	Art. no.	Art. no.
10 mm	120 mm	10.2070.100.21	10.2070.100.31
20 mm	130 mm	10.2070.200.21	10.2070.200.31
30 mm	140 mm	10.2070.300.21	10.2070.300.31
40 mm	150 mm	10.2070.400.21	10.2070.400.31
50 mm	160 mm	10.2070.500.21	10.2070.500.31

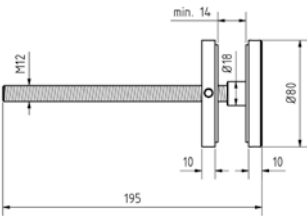


Point fixings Ø 80 mm



- | Finish inside: V2A
- | Finish outside: V4A
- | Sales unit: 2 pieces

Model 2080		AISI 304 (inside)	AISI 316 (outside)
		Art. no.	Art. no.
		10.2080.100.21	10.2080.100.31

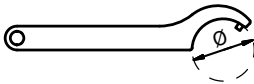


Trans Level Tool



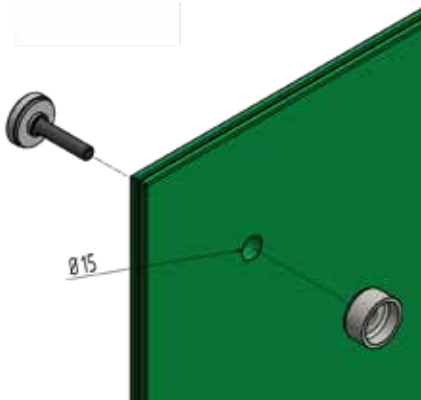
- | Suitable for Onlevel TL-20 systems
- | Sales unit: 1 piece

Model 0201	Zinc-plated steel
Diameter	Art. no.
20	93.0201.020.00
30	93.0201.030.00
40	93.0201.040.00
50	93.0201.050.00
60	93.0201.060.00
70	93.0201.070.00
80	93.0201.080.00

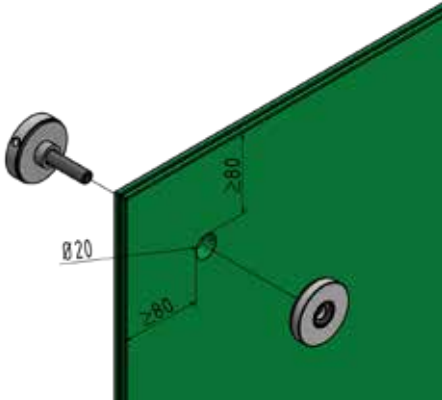


TL-20 | SIDE MOUNT

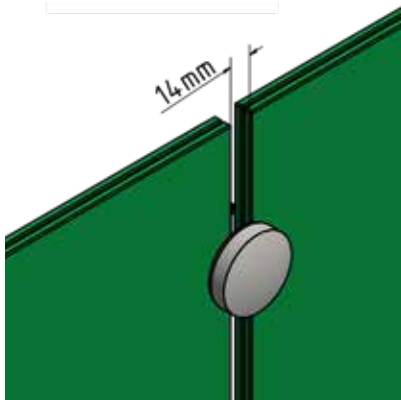
TL-2030/2230



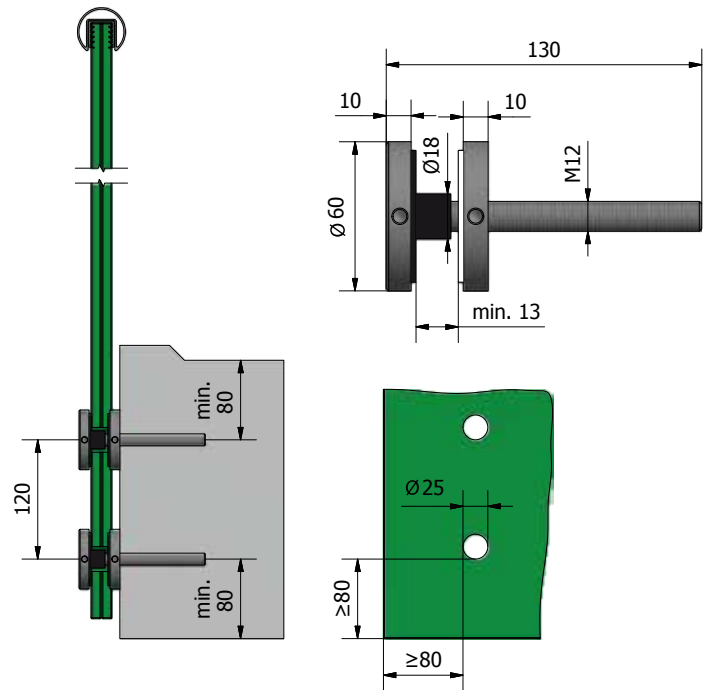
TL-2050



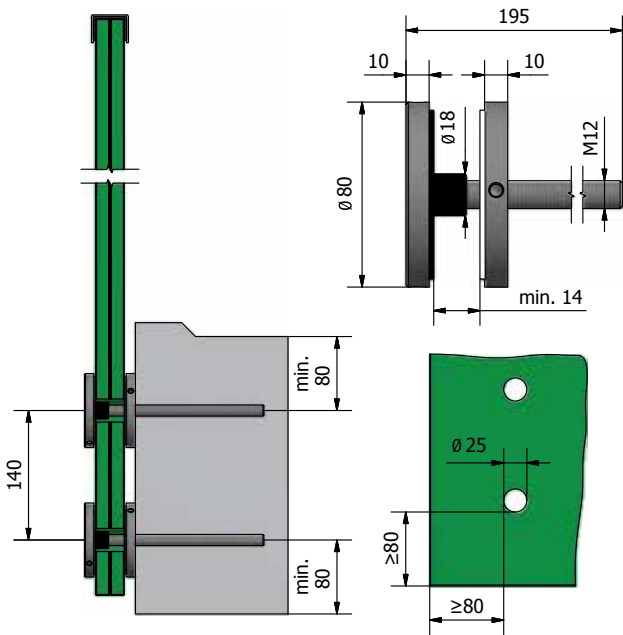
TL-2850



TL-2060



TL-2080



TL-20 | SIDE MOUNT

Point fixings Ø 50 mm | adjustable even after mounting

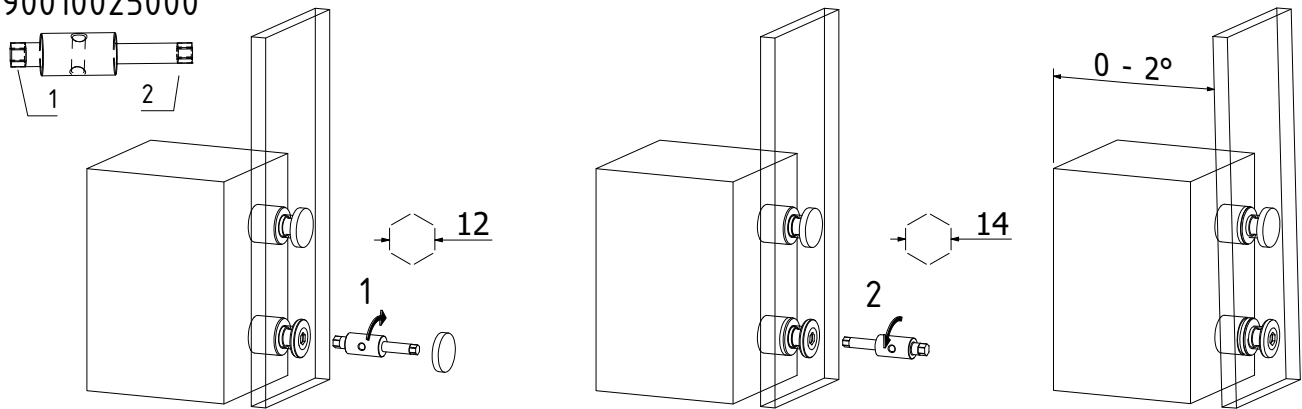


This unique glass adaptor is an addition to Onlevel's complete range. The adaptor with a diameter of 50mm has the feature to be adjustable after the glass has been fitted. This adjustability is done with a special tool.

- | for glass thickness 16.76-21.52mm
- | Sales unit: 1 piece

Modell 2750	AISI 304 (inside)	AISI 316 (outside)
	Art. no.	Art. no.
	10.2750.025.21	10.2750.025.31

90010025000

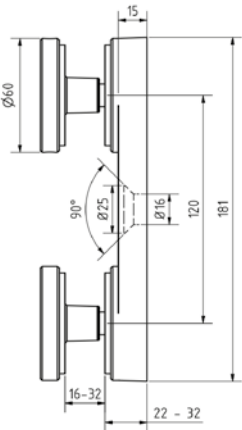


TL-20 | SIDE MOUNT

Point fixings



- | Distance to the wall 15 mm
- | Finish outside: V4A
- | Height: 181 mm
- | Distance between drill holes: 120 mm
- | Sales unit: 2 pieces



Model 2160	AISI 304 (inside)	AISI 316 (outside)
Diameter	Art. no.	Art. no.
60	10.2160.100.21	10.2160.100.31

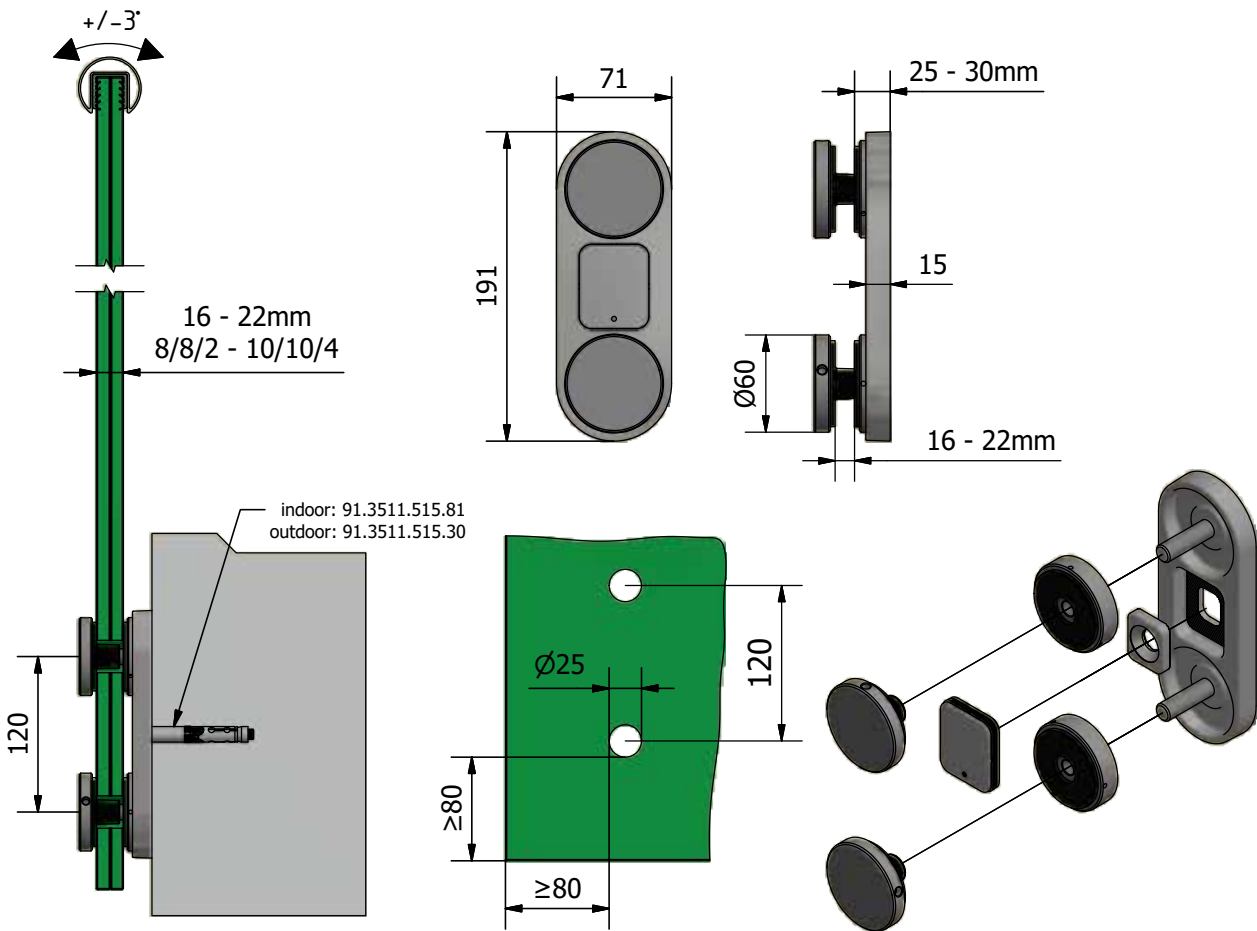
Fischer fixing anchor FH II 15/15Sk



- | Finish interior application: zinc-plated steel (inside)
- | Finish exterior application: V4A (exterior)
- | Required number per adaptor: 1 piece
- | Sales unit: 25 pieces

Model 3511	zinc-plated steel (inside)	AISI 316 (exterior)
	Art. no.	Art. no.
	91.3511.515.30	91.3511.515.81

TL-2160





ONLEVEL

ONLEVEL Ltd. | Units 6 & 7, Alexandria Court | Alexandria Drive
Ashton Commerce Park | Ashton-under-Lyne | Lancashire OL7 0QN | United Kingdom
T +44 0161 804 9500 | F +44 0161 804 9505 | info@onlevel-uk.com | www.onlevel.com