

ONLEVEL

SWINGER SOFT MOTION
SELF-CLOSING
CORNER FITTING

SWINGER SOFT MOTION

Self-closing corner fitting

SWINGER SOFT MOTION is the rock star among door latches - so smooth that even butter will be jealous! Its "close" function turns the slamming of your door into a silent kiss. How cool is that?

We've packed all the hydraulics into this slim fitting as if it were a superhero suit. Not only can you open the door 90°, you can also hold it in this position and you can adjust the closing speeds separately and continuously as if you were the DJ at the party - 182 x 70 mm of pure door chic!

SWINGER SOFT MOTION is available in two versions. One for narrow doors up to 950 mm wide and one for wider doors up to 1250 mm wide. That's flexibility, baby! With the SWINGER SOFT MOTION corner fitting, your door isn't just closed, it's staged. Who needs an ordinary door when you can have a show?

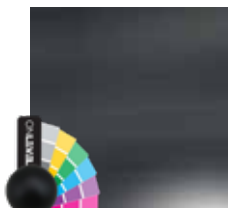
Our Colour Selection



.21 Stainless steel brushed



.23 RAL glossy



.26 RAL matt



.28 RAL structured matt

COLOUR OF YOUR CHOICE?

Of course we deliver in your RAL colour of choice.

Separately adjustable
door and locking speeds



Installation with two anchors
without floor recess

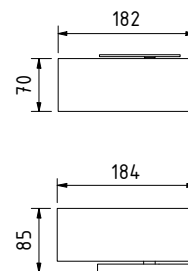
Flexible installation options
with minimum gap dimensions

SWINGER SOFT MOTION

SWINGER SOFT MOTION self-closing corner fitting - 60 kg door



- | Door width: 750 - 950 mm
- | Door weight: up to 60 kg
- | Dimensions 182 x 70 mm
- | Glass: 8 - 12 mm
- | Fitting set for floor and ceiling
- | 110° opening on both sides
- | Hold-open function at 90°
- | Suitable for indoor use

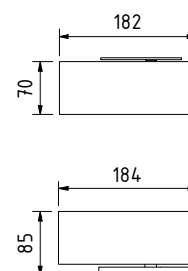


Swinger Soft Motion	AISI 304 (inside)	AISI 316 (outside)
	Art. no.	Art. no.
	24.1000.060.21	24.1000.060.23/26/28

SWINGER SOFT MOTION self-closing corner fitting - 100 kg door



- | Door width: 950 - 1250 mm
- | Door weight: up to 100 kg
- | Dimensions 182 x 70 mm
- | Glass: 10 - 12 mm
- | Fitting set for floor and ceiling
- | 110° opening on both sides
- | Hold-open function at 90°
- | Suitable for indoor use

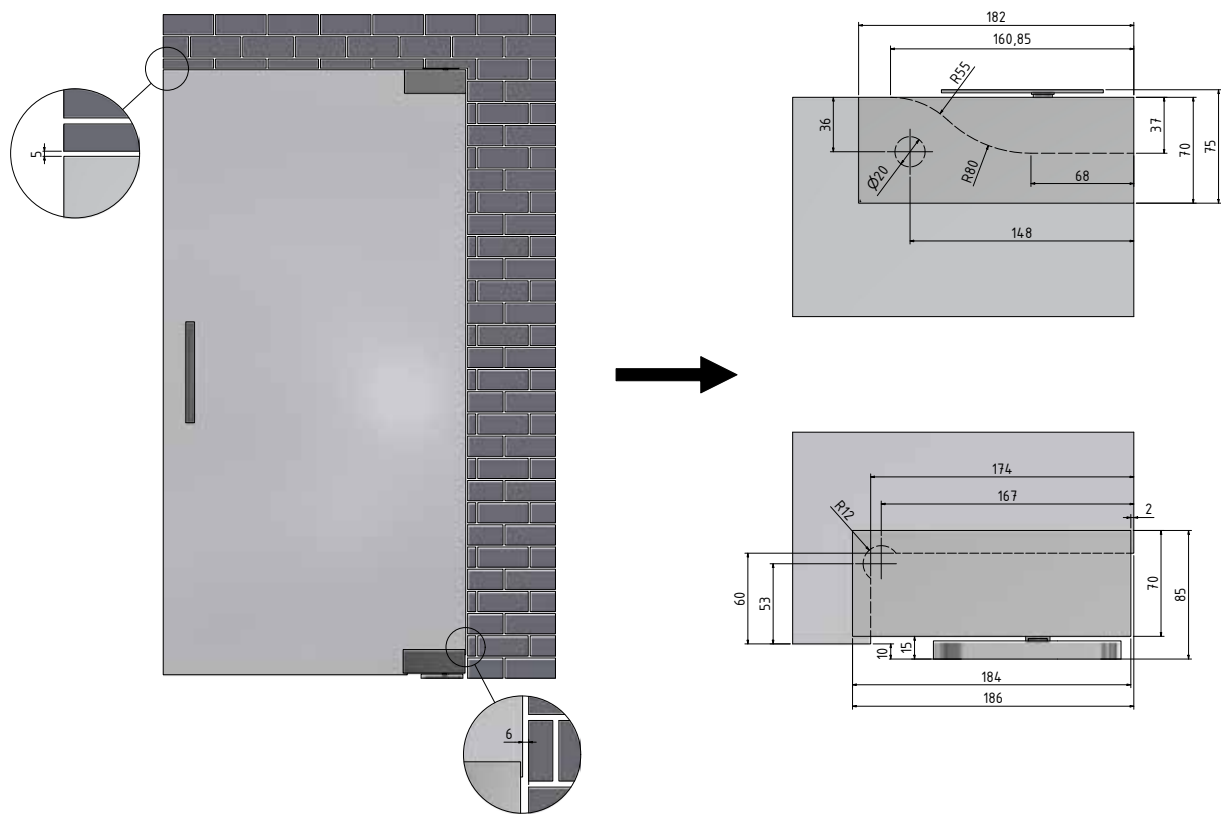


Swinger Soft Motion	AISI 304 (inside)	AISI 316 (outside)
	Art. no.	Art. no.
	24.1000.100.21	24.1000.100.23/26/28

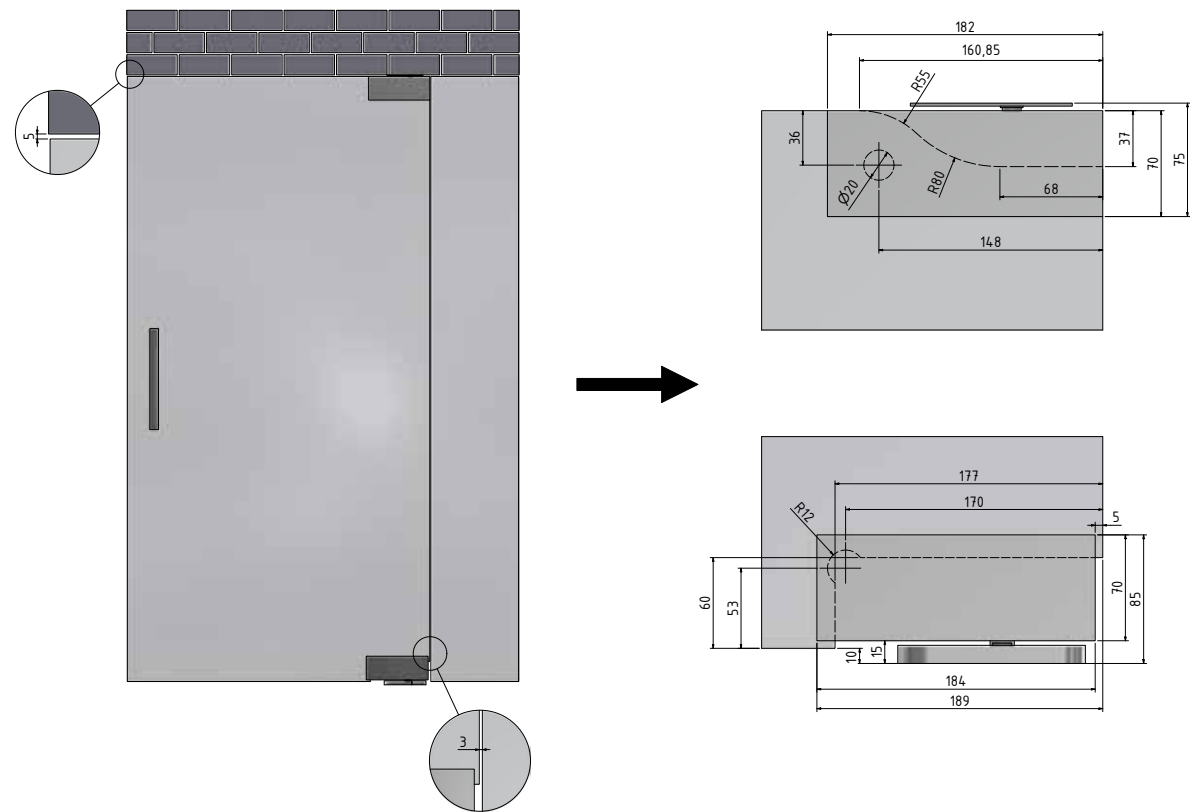
	Swinger Soft Motion corner fitting 60kg door EN3	Swinger Soft Motion corner fitting 100kg door EN5
Base material	Stainless steel V2A	Stainless steel V2A
Door width	750 - 950mm	950 - 1250mm
Max. door weight Door weight	60kg	100kg
Max. door height	2590mm	2590mm
Glass thicknesses ESG	8 - 12mm	10 - 12mm
Opening angle	+/- 110°	+/- 110°
Hold open function	on both sides, at 90°	on both sides, at 90°
Closing speed infinitely adjustable (90° - 15°)	Yes	Yes
Door drop speed continuously adjustable (15° - 0°)	Yes	Yes
Zero position adjustment	+ / -3°	+ / -3°
Application range	Indoor area	Indoor area
Ambient temperature	-20° to + 50°C	-20° to + 50°C
Corrosion resistance in accordance with DIN EN 1670	3	3

SWINGER SOFT MOTION - MOUNTING

SWINGER SOFT MOTION - Mounting on wall



SWINGER SOFT MOTION - Mounting on glass



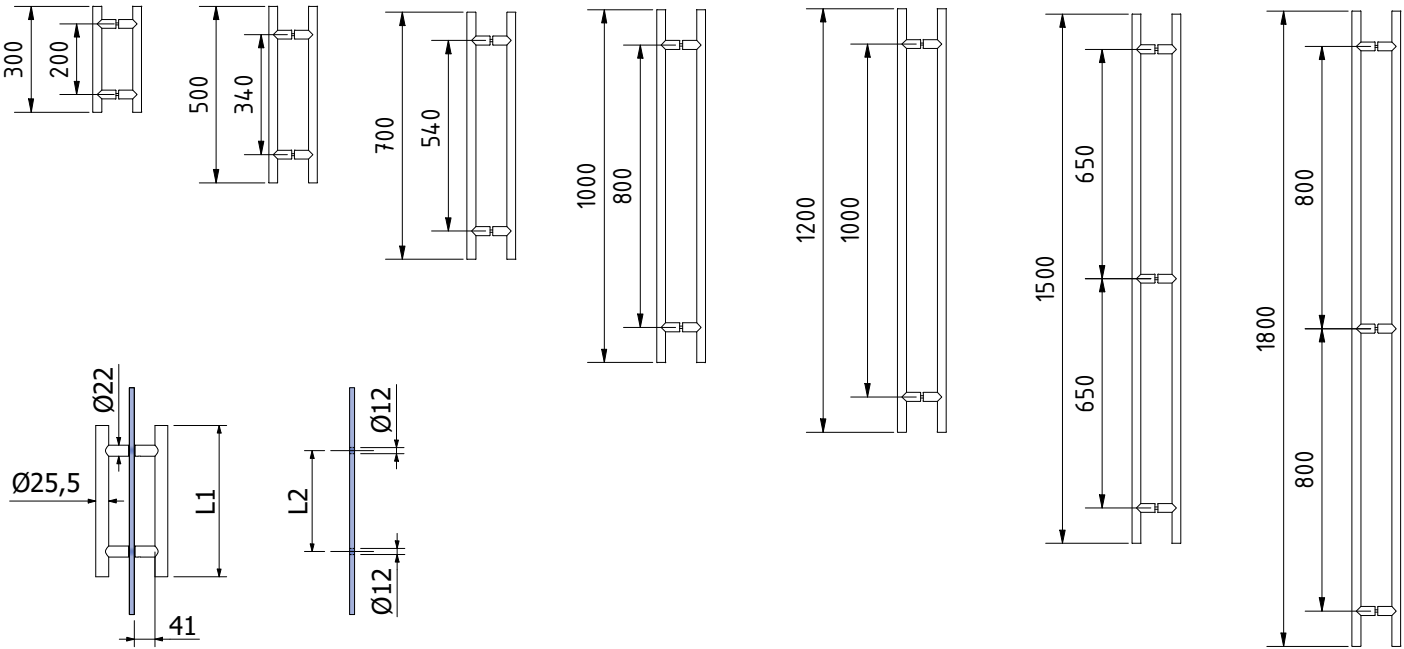
SWINGER SOFT MOTION

Handlebar



- | Dimensions: Ø 25 mm
- | For glass and wooden doors
- | Glass cutout Ø 12 mm
- | Sales unit: 1 set

Model		stainless steel, polished	Stealth Black, powder-coated
Handlebar	Axial dimension	Art. no.	Art. no.
300 mm	200 mm	32.2501.003.21	32.2501.003.18-JB
500 mm	340 mm	32.2501.005.21	32.2501.005.18-JB
700 mm	540 mm	32.2501.007.21	32.2501.007.18-JB
1000 mm	800 mm	32.2501.010.21	-
1200 mm	1000 mm	32.2501.012.21	-
1500 mm	650 mm (2x)	32.2501.015.21	-
1800 mm	800 mm (2x)	32.2501.018.21	-







ONLEVEL

ONLEVEL Ltd. | Unit 7, Alexandria Court | Alexandria Drive
Ashton Commerce Park | Ashton-under-Lyne | Lancashire OL7 0QN | United Kingdom
T +44 0161 804 9500 | F +44 0161 804 9505 | info@onlevel-uk.com | www.onlevel.com